

UNITED STATES PUBLIC LAND SURVEY CORNER CERTIFICATE
OF

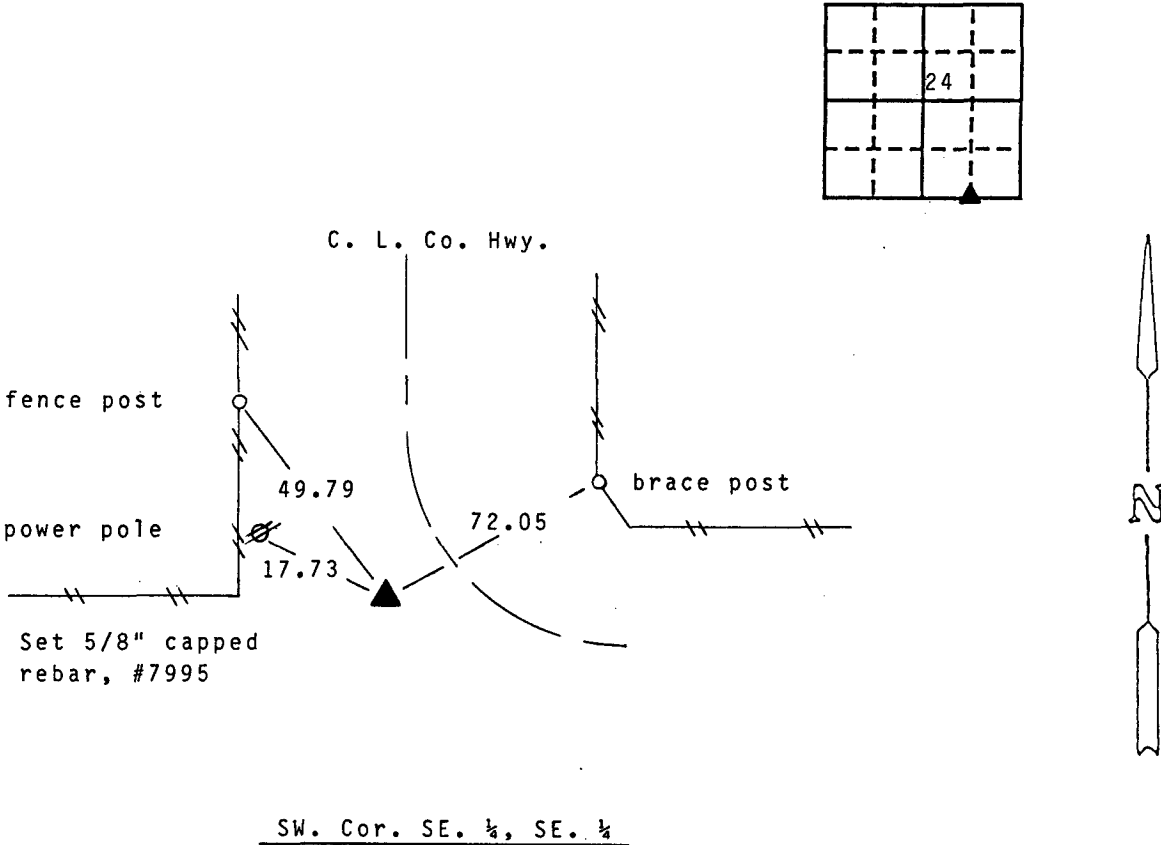
Land Survey Monuments situated in Section 24, Township 75 N, Range 28 W, of the Fifth Principal Meridian, Madison County, Iowa.
Previously recorded in N.A. in County Recorder's Office.

(book, page, document number, etc.)
(Show reason for preparing this certificate, the evidence and detailed procedures used in establishing the corner positions and monumentation found or placed.)

Monument Description and Remarks: Set 5/8" capped rebar, #7995, at position based on
1993 traverse around Section 24.

PLAN - VIEW

(Show a minimum of three reference ties to durable physical objects, relevant monuments and physical conditions that will enable recovery of the corner.)



Note: all ties to "x" nails

I hereby certify that the survey work was completed and this certificate was prepared by me or under my direct personal supervision and that I am a duly registered land surveyor under the laws of the state of Iowa. My registration renewal date is 12/31/95.

Signature: J. Brian Morrissey
Name typed or printed: J. Brian Morrissey
Date: 6/5/95 Reg. No. 7995

List Corners to be Indexed			
Corners	Section	Twp	Range
SW., SE. 1/4, SE. 1/4	24	75N	28W

FILED NO. 3088

BOOK 1 PAGE 289

95 JUN -5 PM 1:41

MICHELLE UTSLER
RECORDER
MADISON COUNTY, IOWA

COMPUTER ☒
RECORDED ☒
COMPARED ☒

REC \$ 5.00
AUD \$
R.M.F. \$ 1.00

SEAL

