

UNITED STATES PUBLIC LAND SURVEY CORNER CERTIFICATE

95-395

OF

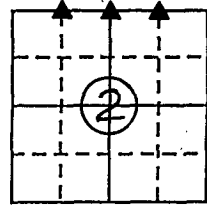
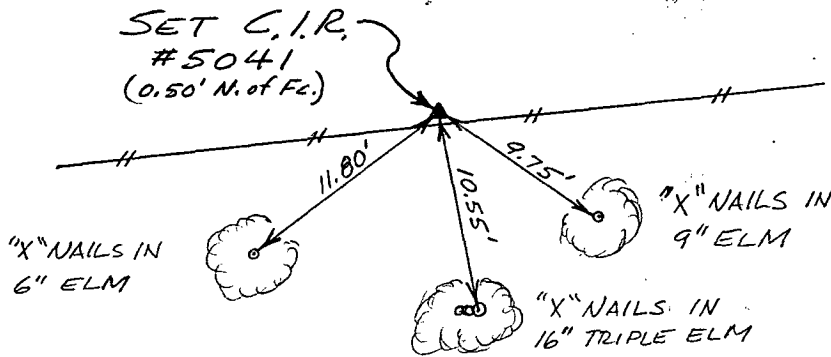
Land Survey Monuments situated in Section 2, Township 77 North, Range 26 West, of the Fifth Principal Meridian, MADISON County, Iowa. Previously recorded in N/A in County Recorder's Office.

(Show reason for preparing this certificate, the evidence and detailed procedures used in establishing the corner positions and monumentation found or placed.)

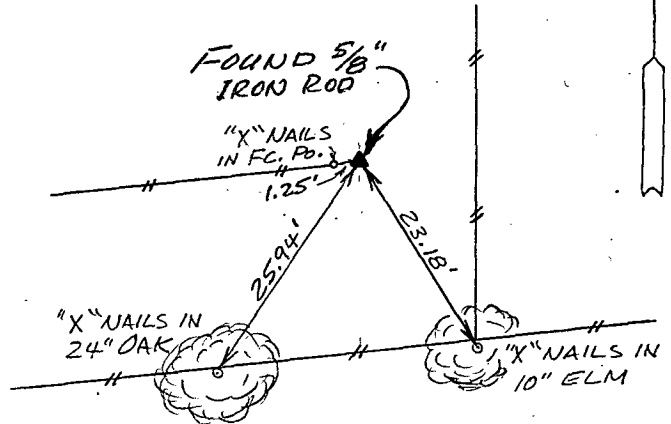
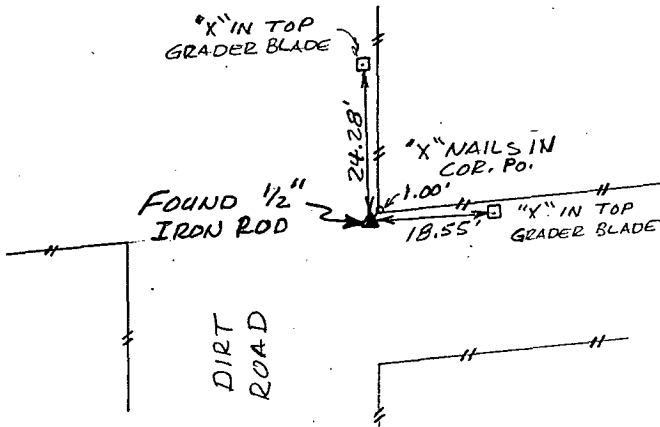
Monument Description and Remarks: Set C.I.R.#5041 at N. 1/4 COR. SEC. 2, T77N, R26W based on Lot Corners found and dimensions shown on Greenbrier Estates Final Plat (adj. subdivision, Dallas Co.)

PLAN - VIEW

(Show a minimum of three reference ties to durable physical objects, relevant monuments and physical conditions that will enable recovery of the corner.)



Ref. to N. 1/4 COR., SECTION 2, T77N, R26W.



Ref. to NW. COR., NE. fr. 1/4 NW. 1/4, SECTION 2, T77N, R26W.

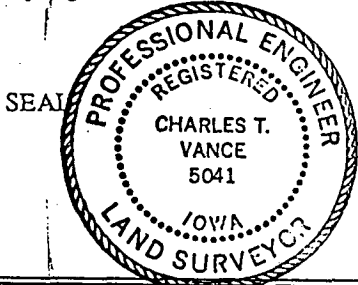
Ref. to NE. COR., NW. fr. 1/4 NE. 1/4, SECTION 2, T77N, R26W.

I hereby certify that the survey work was completed and this land surveying document was prepared by me or under my direct personal supervision and that I am a duly registered land surveyor under the laws of the state of Iowa

Signature: Charles T. Vance
Name typed or printed: Charles T. Vance, PE & LS

Date: 22 April 1995 Reg. No. 5041

My registration renewal date is December 31, 1995



COMPUTER
RECORDED
COMPALED

Corners	Section	Twp.	Range
N. 1/4 COR.	2	77	26
NW. COR			
NE. 1/4 NW. 1/4	2	77	26
NE. COR.			
NW. 1/4 NE. 1/4	2	77	26

FILED NO. 2902

BOOK 1 PAGE 285

95 MAY -9 PM 3:53

MICHELLE UTSLER
RECORDED
MADISON COUNTY, IOWA

REC \$ 5.00

AUD \$

R.M.F. \$ 1.00