

COMPUTER
INDEXED
REC \$ 7.75
AUD \$ _____
R.M.F. \$ _____

FILED NO. 341
BOOK 1 PAGE 301
95 AUG -4 PM 4:11
MICHELLE UTSELL
RECORDER
MADISON COUNTY, IOWA

Prepared By: J. Brian Morrissey, Madison Co. Engineer, P.O.Box 152 Winterset, Ia. 50273, Telephone: (515) 462-1136

UNITED STATES PUBLIC LAND SURVEY CORNER CERTIFICATE OF

Land Survey Monuments situated in Section 7, Township 75N, Range 27W, of the Fifth Principal Meridian, Madison County, Iowa.
Previously recorded in N.A. in County Recorders Office.

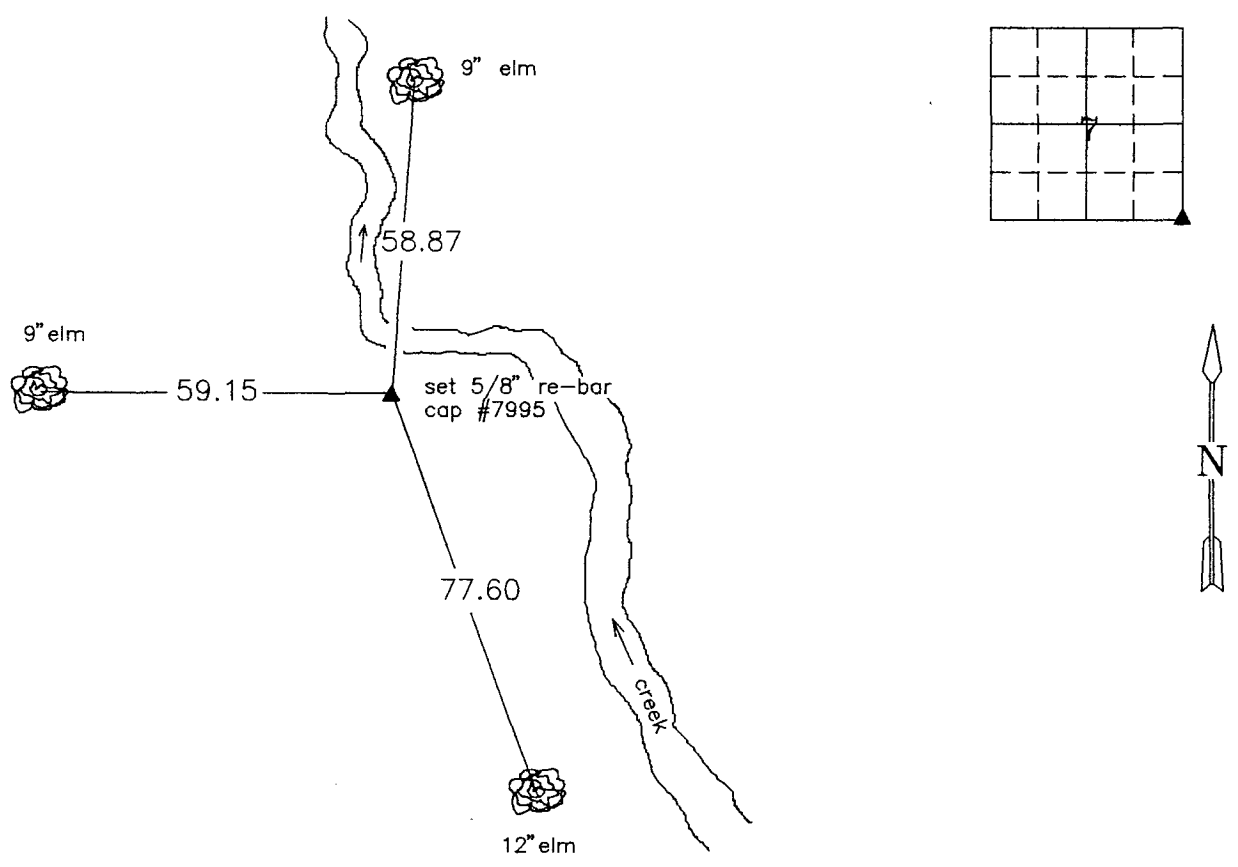
(book, page, document number, etc.)

(Show reason for preparing this certificate, the evidence and detailed procedures used in establishing the corner positions and monumentation found or placed.)

Monument Description and Remarks: Set 5/8" re-bar with cap #7995 using fence line and road for intersecting point.

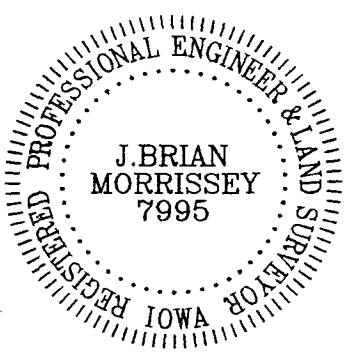
PLAN VIEW

(Show a minimum of three reference ties to durable physical objects, relevant monuments and physical conditions that will enable recovery of the corner.)



S.E. Cor. S.E. 1/4 Sec. 7, T-75N, R-27W

NOTE: all ties "X" nails



I hereby certify that the survey work was completed and this certificate was prepared by me or my direct personal supervision and that I am a duly registered land surveyor under the laws of the state of Iowa. My registration renewal date is 12/31/95.

Signature: J. Brian Morrissey
Name typed or printed: J. Brian Morrissey

Date: July 31, 1995 Reg.No. 7995