

UNITED STATES PUBLIC LAND SURVEY CORNER CERTIFICATE

95-115

OF

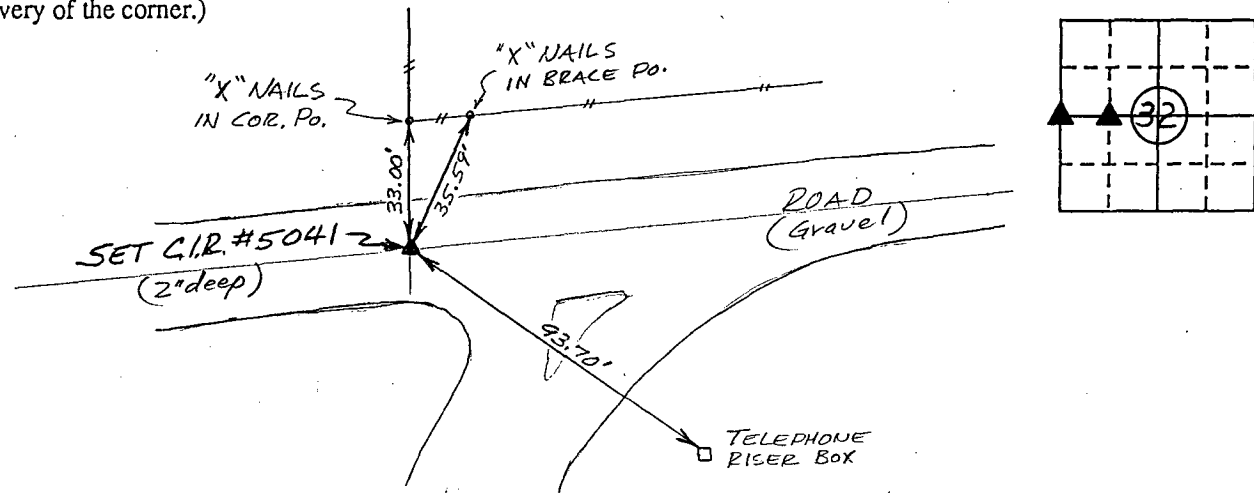
Land Survey Monuments situated in Section 32, Township 76 North, Range 26 West, of the Fifth Principal Meridian, Madison County, Iowa. Previously recorded in N/A in County Recorder's Office.

(Show reason for preparing this certificate, the evidence and detailed procedures used in establishing the corner positions and monumentation found or placed.)

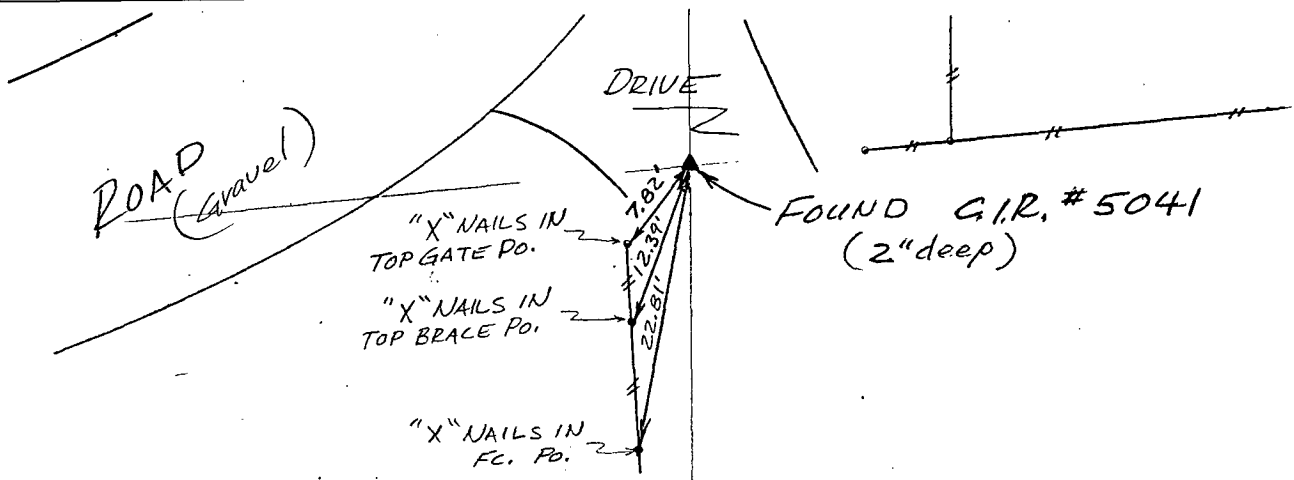
Monument Description and Remarks: Set W. 1/4 Cor. on E. E.-W. Road and in line with fence North and E of Road South.

PLAN - VIEW

(Show a minimum of three reference ties to durable physical objects, relevant monuments and physical conditions that will enable recovery of the corner.)



Ref. to West Quarter Corner, SECTION 32, T76N, R26W



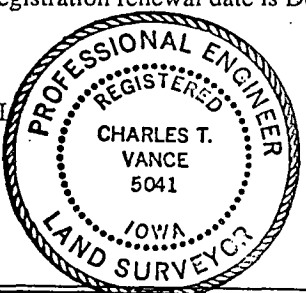
Ref. to SE. COR., SW. 1/4 NW. 1/4, SECTION 32, T76N, R26W.

I hereby certify that the survey work was completed and this land surveying document was prepared by me or under my direct personal supervision and that I am a duly registered land surveyor under the laws of the state of Iowa

Signature: Charles T. Vance
Name typed or printed: Charles T. Vance, PE & LS

Date: 1 March 1995 Reg. No. 5041

My registration renewal date is December 31, 19 95



Corners	Section	Twp	Range
W. 1/4 COR.	32	76	26

SE. COR. 32-76-26
SW. 1/4 NW. 1/4

REC \$ 5.00
AUD \$
R.M.F. \$ 1.00

COMPUTER
RECORDED
COMPADED

FILED NO. 2446
BOOK 1 PAGE 277
95 MAR 28 PM 2:12

MICHELLE UTSLER
RECORDER
MADISON COUNTY, IOWA