

UNITED STATES PUBLIC LAND SURVEY CORNER CERTIFICATE

SLSI 9-94

94-2285

OF

Land Survey Monuments situated in Section 21, Township 74 North, Range 26 West, of the Fifth Principal Meridian, Madison County, Iowa.
Previously recorded in N/A in County Recorder's Office.

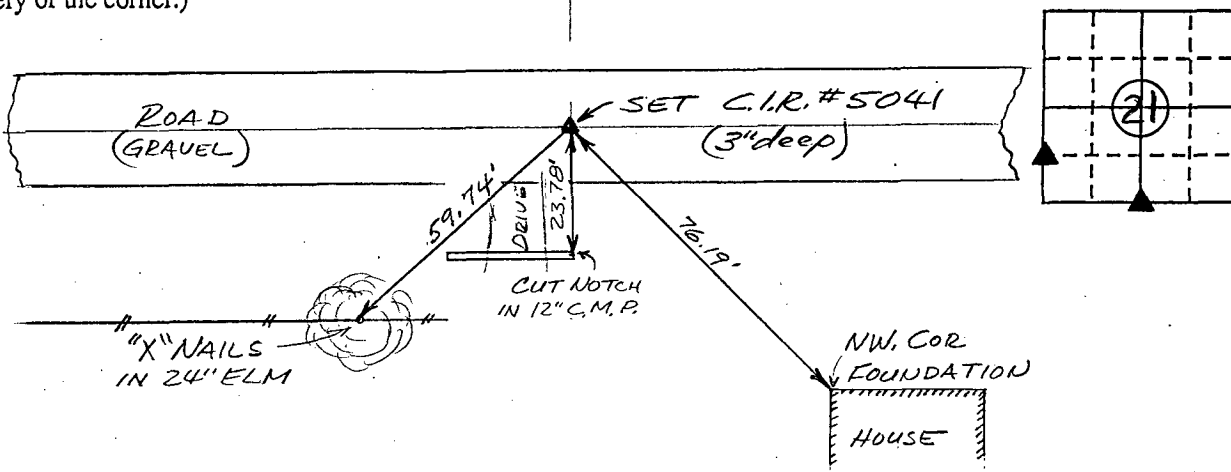
(book, page, document number, etc.)

(Show reason for preparing this certificate, the evidence and detailed procedures used in establishing the corner positions and monumentation found or placed.)

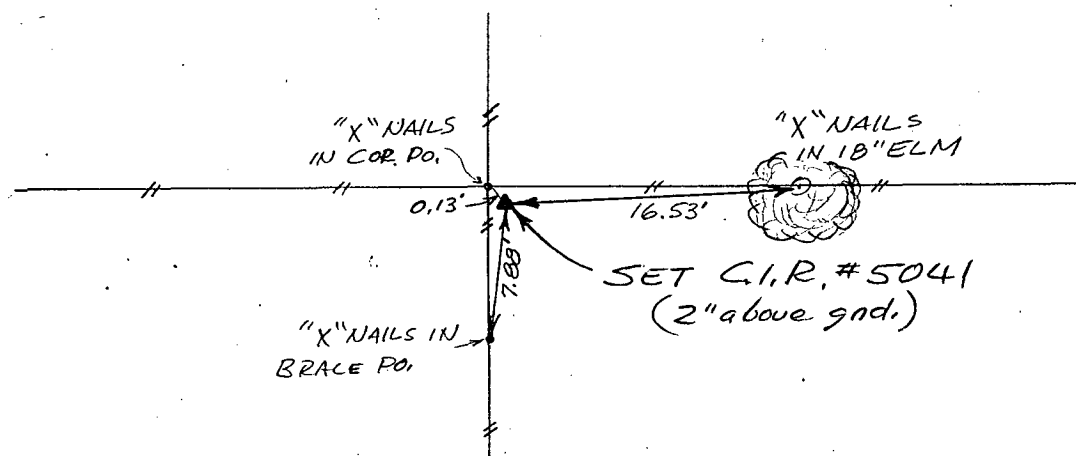
Monument Description and Remarks: See Sketch Below

PLAN - VIEW

(Show a minimum of three reference ties to durable physical objects, relevant monuments and physical conditions that will enable recovery of the corner.)



Ref. to NW. COR., SW. 1/4 SW. 1/4, SECTION 21, T74N, R26W



Ref. to SOUTH QUARTER CORNER, SECTION 21, T74N, R26W.

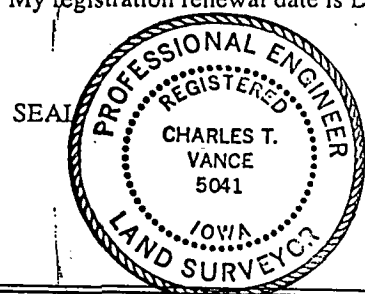
I hereby certify that the survey work was completed and this land surveying document was prepared by me or under my direct personal supervision and that I am a duly registered land surveyor under the laws of the state of Iowa

Signature: Charles T. Vance

Name typed or printed: Charles T. Vance, PE & LS

Date: 27 Feb. 1995 Reg. No. 5041

My registration renewal date is December 31, 19 95



List Corners to be Indexed
Corners Section Twp Range

NW. COR. 21 - 74 - 26
SW. 1/4 SW. 1/4

S. 1/4 COR. 21 - 74 - 26

REC \$ 5.00

AUD \$ 1.00

R.M.F. \$ 1.00

COMPUTER ☒
RECORDED ☒
COMPARED ☒

FILED NO. 2444

BOOK 1 PAGE 275

95 MAR 28 PM 2:10

MICHELLE UTSLER
RECORDER
MADISON COUNTY, IOWA