

UNITED STATES PUBLIC LAND SURVEY CORNER CERTIFICATE

94-2215

OF

Land Survey Monuments situated in Section 27, Township 77 North, Range 26 West, of the Fifth Principal Meridian, MADISON County, Iowa. Previously recorded in N/A in County Recorder's Office.

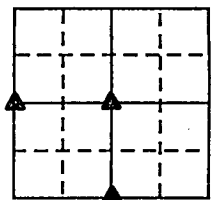
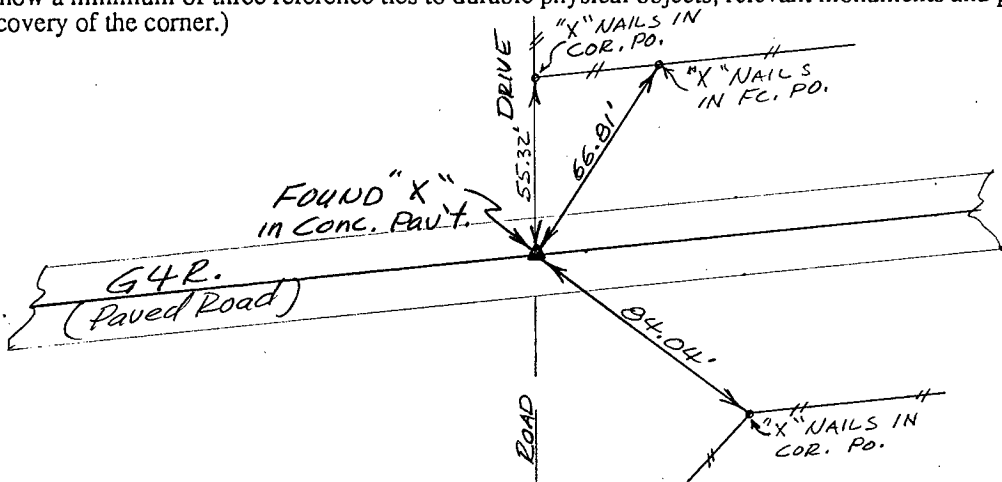
(book, page, document number, etc.)

(Show reason for preparing this certificate, the evidence and detailed procedures used in establishing the corner positions and monumentation found or placed.)

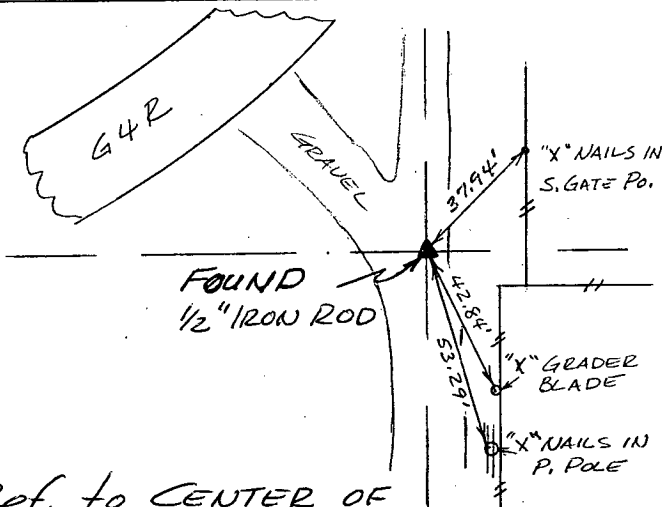
Monument Description and Remarks: See sketch Below

PLAN - VIEW

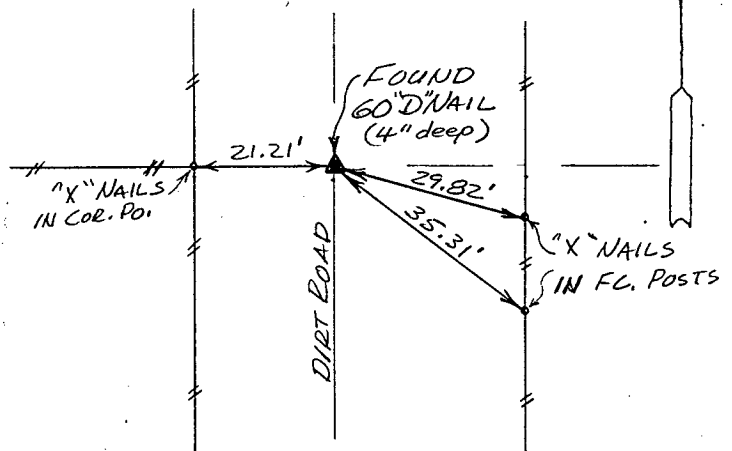
(Show a minimum of three reference ties to durable physical objects, relevant monuments and physical conditions that will enable recovery of the corner.)



Ref. to W. 1/4 CORNER, SECTION 27, T77N, R26W.



Ref. to CENTER OF SECTION 27, T77N, R26W.



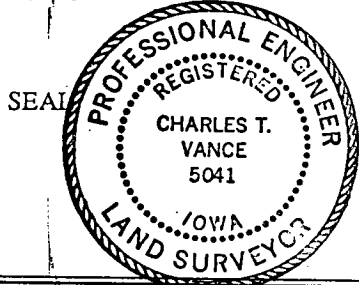
Ref. to S. 1/4 CORNER SECTION 27, T77N, R26W.

I hereby certify that the survey work was completed and this land surveying document was prepared by me or under my direct personal supervision and that I am a duly registered land surveyor under the laws of the state of Iowa

Signature: Charles T. Vance
Name typed or printed: Charles T. Vance, PE & LS

Date: 7 Feb. 1995 Reg. No. 5041

My registration renewal date is December 31, 1995



| Corners | Section | Twp | Range |
|-------------|---------|-----|-------|
| W. 1/4 COR. | 27 | 77 | 26 |
| CENTER | 27 | 77 | 26 |
| S. 1/4 COR. | 27 | 77 | 26 |

COMPUTER
RECORDED
COMPARED

REC \$ 5.00
AUD \$
R.M.F. \$

FILED NO. 2067
BOOK 1 PAGE 267
95 FEB 15 AM 10:05
MICHELLE UTSLER
RECORDER
MADISON COUNTY, IOWA