

## UNITED STATES PUBLIC LAND SURVEY CORNER CERTIFICATE

95-415

OF

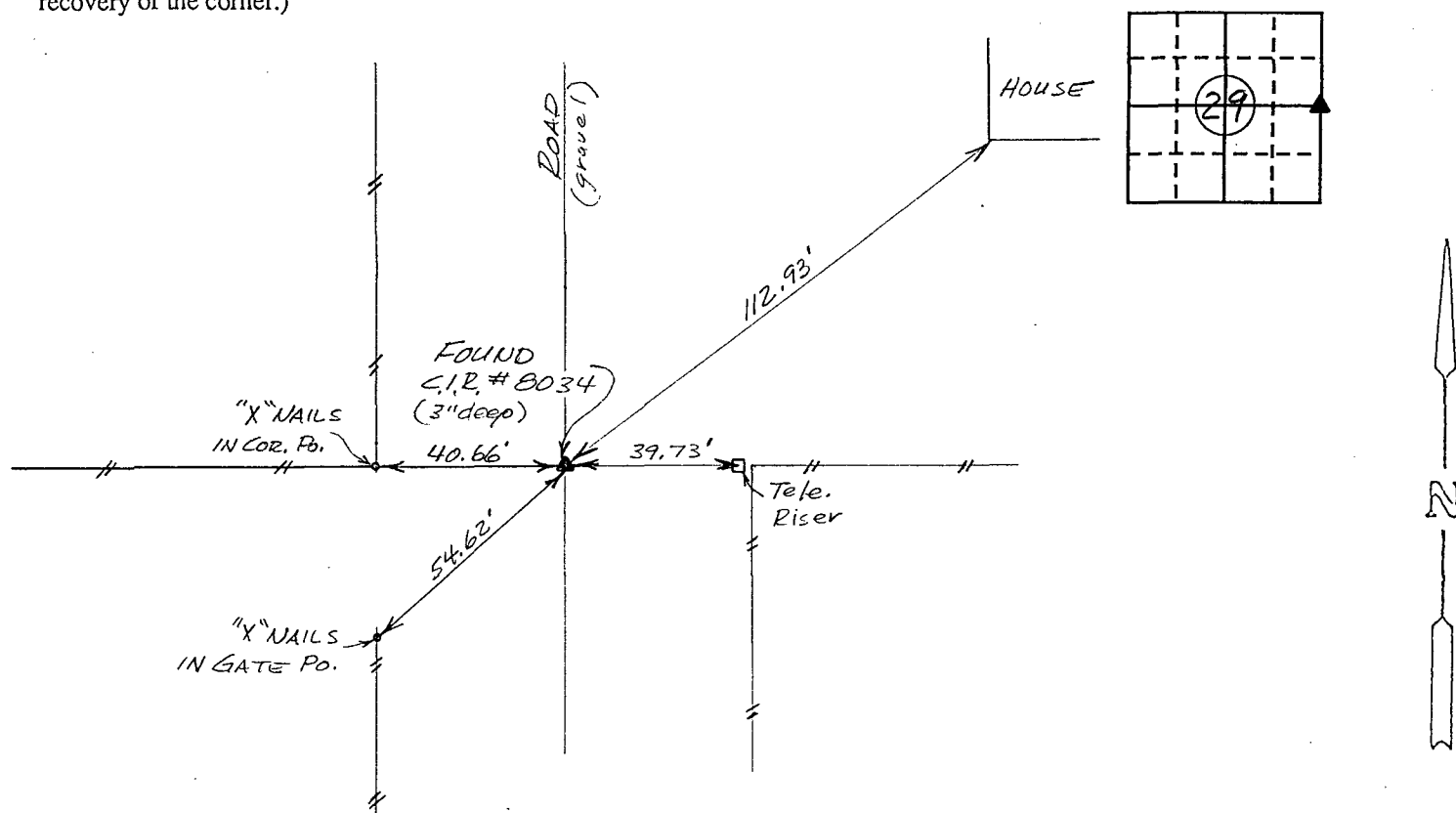
Land Survey Monuments situated in Section 29, Township 75 North, Range 28 West, of the Fifth Principal Meridian, MADISON County, Iowa.  
 Previously recorded in N/A in County Recorder's Office.  
 (book, page, document number, etc.)

(Show reason for preparing this certificate, the evidence and detailed procedures used in establishing the corner positions and monumentation found or placed.)

Monument Description and Remarks: Found C.I.R. # 8034 at East Quarter Corner

## PLAN - VIEW

(Show a minimum of three reference ties to durable physical objects, relevant monuments and physical conditions that will enable recovery of the corner.)



Ref. to E. 1/4 COR., SECTION 29, T75N, R28W

I hereby certify that the survey work was completed and this land surveying document was prepared by me or under my direct personal supervision and that I am a duly registered land surveyor under the laws of the state of Iowa

Signature: Charles T. VanceName typed or printed: Charles T. VanceDate: 11 April 1995 Reg. No. 5041My registration renewal date is December 31, 1995

Corners	Section	Twp	Range
E. 1/4 COR.	29	75	28

COMPUTER ☒  
 INDEXED ☒  
 FILED ☒

FILED NO. 2900  
 BOOK 1 PAGE 283

95 MAY -9 PM 3:51

MICHELLE UTSLER  
 RECORDER  
 MADISON COUNTY, IOWA

REC \$ 5.00  
 AUD \$ 1.00  
 R.M.F. \$ 1.00

