

UNITED STATES PUBLIC LAND SURVEY CORNER CERTIFICATE

94-25 S

OF

Land Survey Monuments situated in Section 17, Township 75 North, Range 26 West, of the Fifth Principal Meridian, Madison County, Iowa. Previously recorded in N/A in County Recorder's Office.

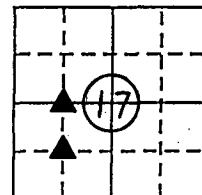
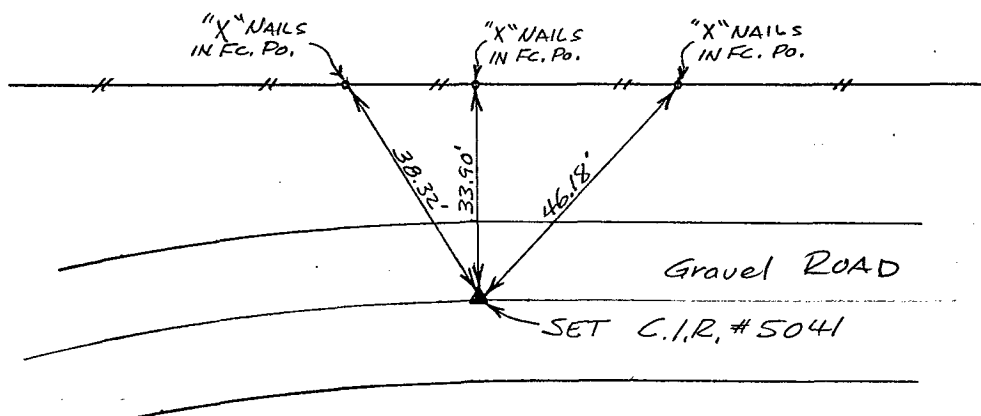
(book, page, document number, etc.)

(Show reason for preparing this certificate, the evidence and detailed procedures used in establishing the corner positions and monumentation found or placed.)

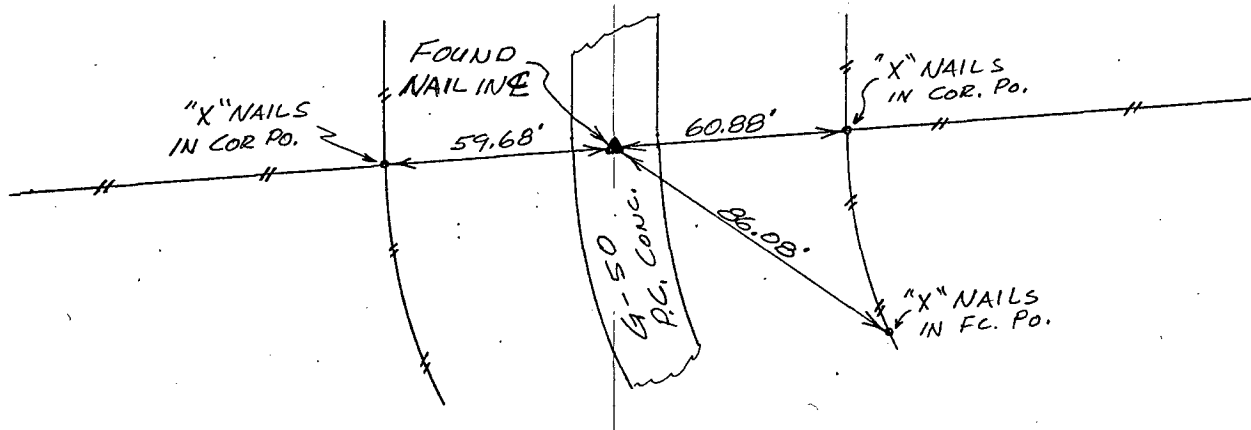
Monument Description and Remarks: ~~See sketch below~~
See sketch Below

PLAN - VIEW

(Show a minimum of three reference ties to durable physical objects, relevant monuments and physical conditions that will enable recovery of the corner.)



Ref. to NE. COR., NW. 1/4 SW. 1/4, SECTION 17, T75N, R26W



Ref. to SE. COR., NW. 1/4 SW. 1/4, SECTION 17, T75N, R 26 W

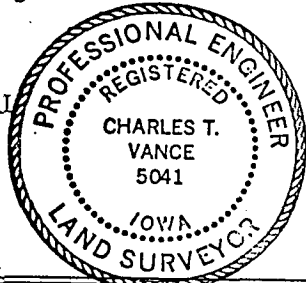
I hereby certify that the survey work was completed and this land surveying document was prepared by me or under my direct personal supervision and that I am a duly registered land surveyor under the laws of the state of Iowa

Signature: Charles T. Vance

Name typed or printed: Charles T. Vance, PE & LS

Date: 5 April 1995 Reg. No. 5041

My registration renewal date is December 31, 19 95



List Corners to be Indexed

Corners	Section	Twp	Range
NE. COR.	17	75	26
NW. 1/4 SW. 1/4			

SE. COR.	17	75	26
NW. 1/4 SW. 1/4			

CORNER
 FOUND
 RECORDED

REC \$ 5.00
 AUD \$ _____
 R.M.F. \$ 1.00

FILED NO. **2898**
 BOOK 1 PAGE 281
 95 MAY -9 PM 3:49
 MICHELLE UTSLER
 RECORDER
 MADISON COUNTY, IOWA