

UNITED STATES PUBLIC LAND SURVEY CORNER CERTIFICATE

94-218 S

OF

Land Survey Monuments situated in Section 28, Township 77 North, Range 26 West, of the Fifth Principal Meridian, Madison County, Iowa. Previously recorded in N/A in County Recorder's Office.

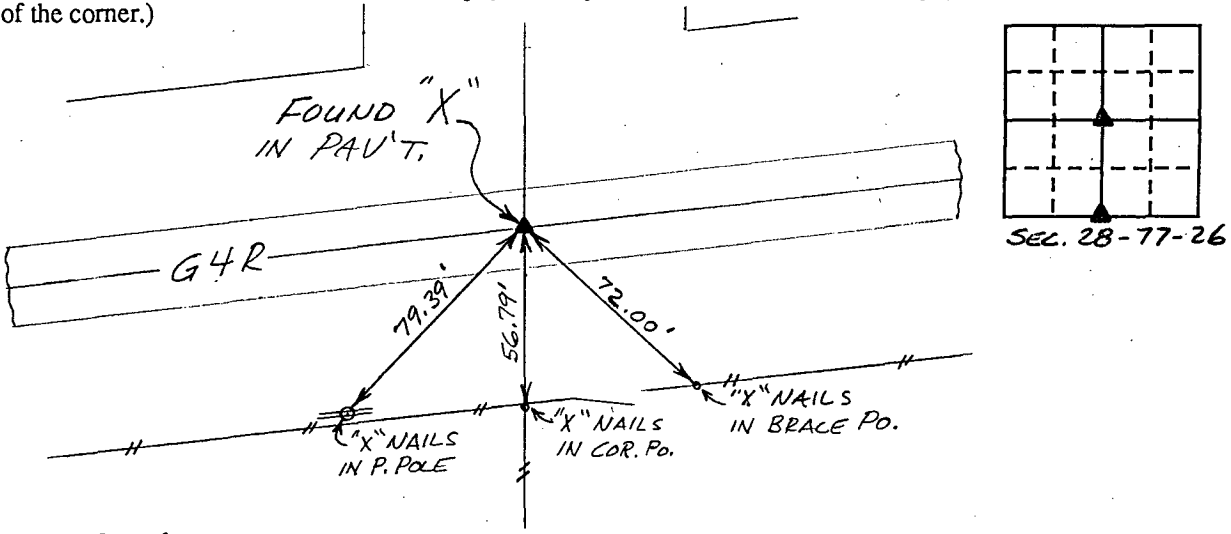
(book, page, document number, etc.)

(Show reason for preparing this certificate, the evidence and detailed procedures used in establishing the corner positions and monumentation found or placed.)

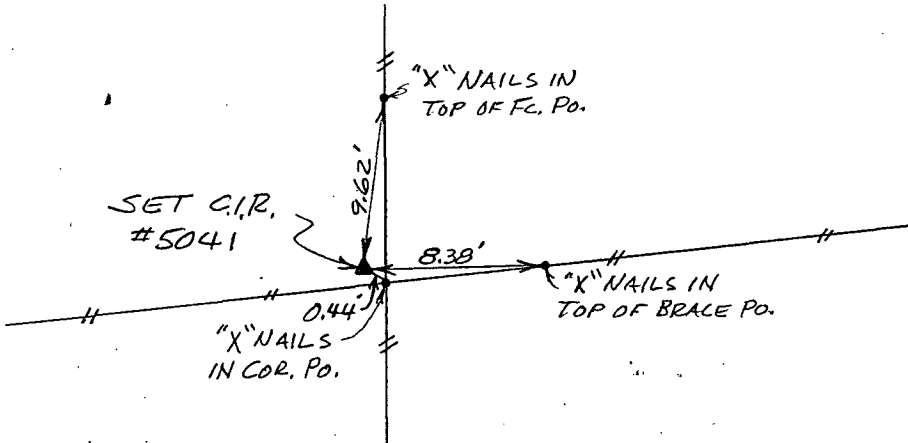
Monument Description and Remarks: Found "X" cut in P.C.C. Pavement at the center of section and set C.I.R. #5041 on fourway fence intersection at South Quarter Corner.

PLAN - VIEW

(Show a minimum of three reference ties to durable physical objects, relevant monuments and physical conditions that will enable recovery of the corner.)



Ref. to CENTER OF SECTION 28, T77N, R26W



Ref. to S. 1/4 COR. OF SECTION 28, T77N, R26W

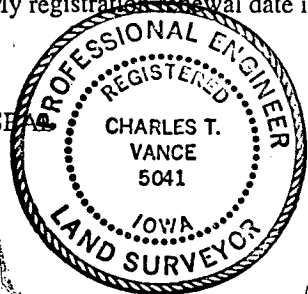
I hereby certify that the survey work was completed and this land surveying document was prepared by me or under my direct personal supervision and that I am a duly registered land surveyor under the laws of the state of Iowa

Signature: Charles T. Vance

Name typed or printed: Charles T. Vance, PE & LS

Date: 19 Dec. 1994 Reg. No. 5041

My registration renewal date is December 31, 19 95



Corners	List Corners to be Indexed		
	Section	Twp	Range
CENTER	28	77	26
S. 1/4 COR.	28	77	26

COMPUTER
RECORDED
COMPALED

FILED NO. 1757

BOOK 1 PAGE 257

95 JAN -6 AM 10:30

REC \$ 5.00
AUD \$
R.M.F. \$ 1.00

MICHELLE UTSLER
RECORDER
MADISON COUNTY, IOWA