

UNITED STATES PUBLIC LAND SURVEY CORNER CERTIFICATE

94-95

OF

Land Survey Monuments situated in Section 3, Township 75 North, Range 27 West, of the Fifth Principal Meridian, MADISON County, Iowa. Previously recorded in N/A in County Recorder's Office.

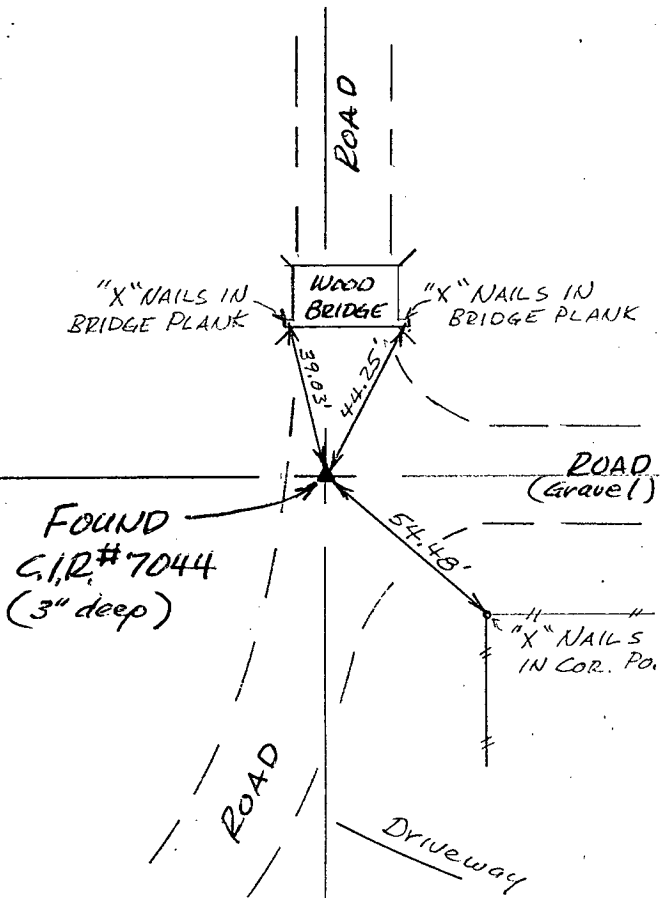
(book, page, document number, etc.)

(Show reason for preparing this certificate, the evidence and detailed procedures used in establishing the corner positions and monumentation found or placed.)

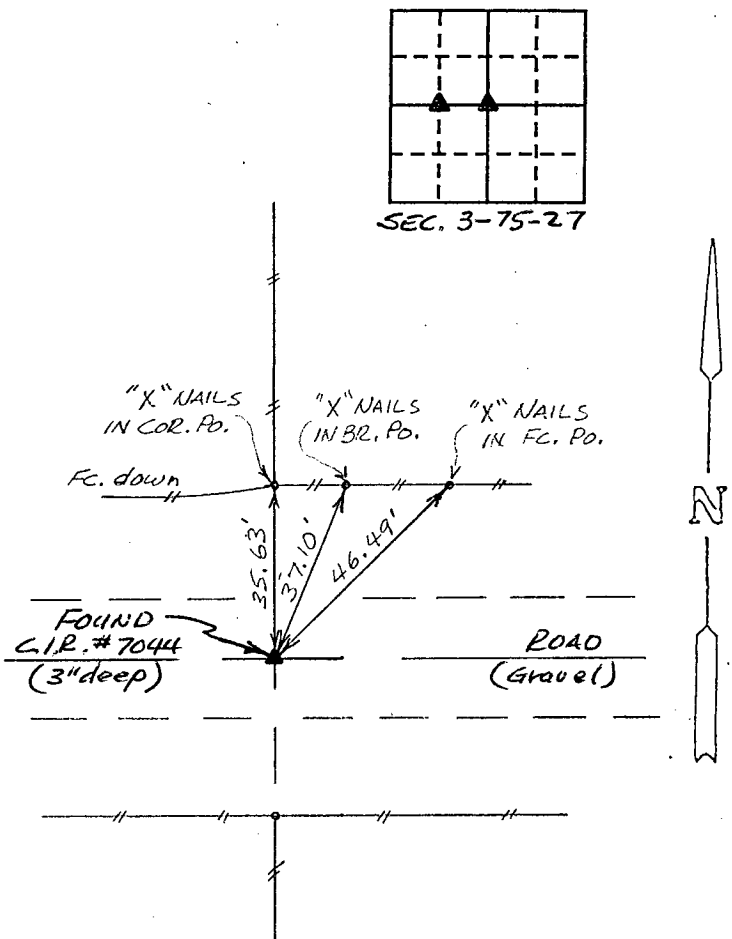
Monument Description and Remarks: Found C.I.R. # 7044 at both land corners.

PLAN - VIEW

(Show a minimum of three reference ties to durable physical objects, relevant monuments and physical conditions that will enable recovery of the corner.)



Ref. to SW. Cor., SE. 1/4 NW. 1/4, SECTION 3, T75N, R27W.



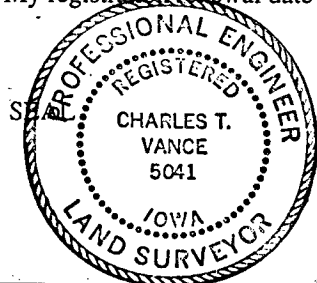
Ref. to CENTER SECTION 3, T75N, R27W.

I hereby certify that the survey work was completed and this land surveying document was prepared by me or under my direct personal supervision and that I am a duly registered land surveyor under the laws of the state of Iowa

Signature: Charles T. Vance  
Name typed or printed: Charles T. Vance, PE & LS

Date: 10 Nov. 1994 Reg. No. 5041

My registration renewal date is December 31, 1995



Corners	Section	Twp	Range
SW. COR., SE. 1/4 NW. 1/4	3	75	27
CENTER	3	75	27

COMPUTER   
RECORDED   
COMPALED

REC 5.00  
AUD \$ 1.00  
R.M.F. \$ 1.00

FILED NO. 1511  
BOOK 1 PAGE 251  
94 DEC - 6 PM 1:59  
MICHELLE UTSLER  
RECORDER  
MADISON COUNTY, IOWA