

UNITED STATES PUBLIC LAND SURVEY CORNER CERTIFICATE

94-1715

OF

Land Survey Monuments situated in Section 12, Township 74 North, Range 26 West, of the Fifth Principal Meridian, MADISON County, Iowa. Previously recorded in N/A in County Recorder's Office.

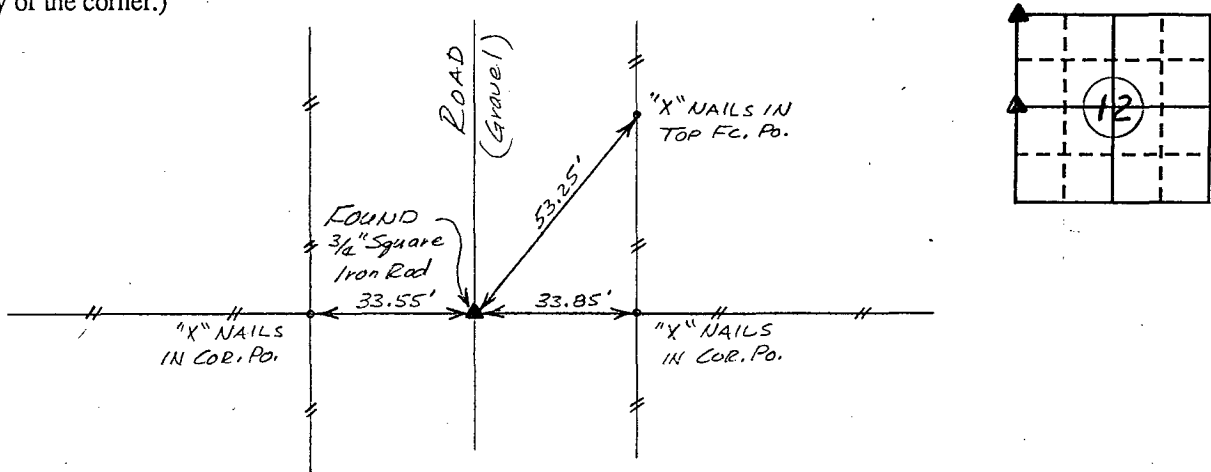
(book, page, document number, etc.)

(Show reason for preparing this certificate, the evidence and detailed procedures used in establishing the corner positions and monumentation found or placed.)

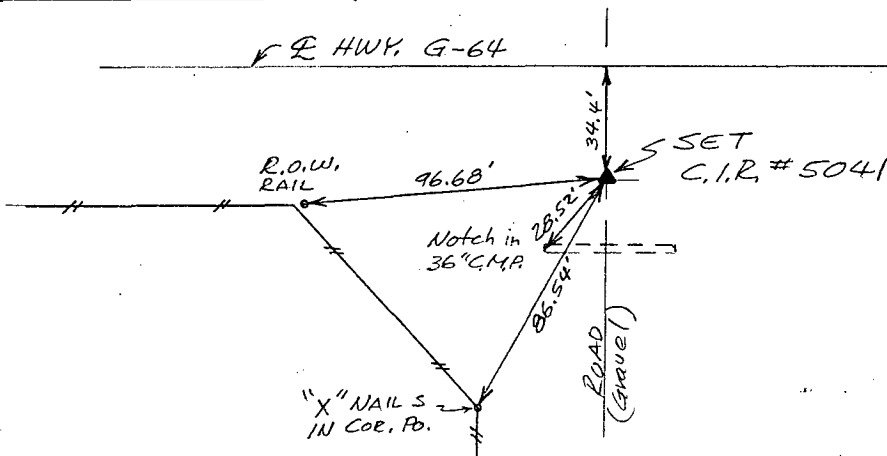
Monument Description and Remarks: NW. Cor. of Section found and W. 1/4 Cor. set according to I.D.O.T. right of way description

PLAN - VIEW

(Show a minimum of three reference ties to durable physical objects, relevant monuments and physical conditions that will enable recovery of the corner.)



Ref. to the NW. COR. OF SECTION 12, T74N, R26W



Ref. to the W. 1/4 COR. OF SECTION 12, T74N, R26W.

I hereby certify that the survey work was completed and this land surveying document was prepared by me or under my direct personal supervision and that I am a duly registered land surveyor under the laws of the state of Iowa

Signature: Charles T. Vance
Name typed or printed: Charles T. Vance, PE & LS

Date: 30 Nov. 1994 Reg. No. 5041

My registration renewal date is December 31, 1995

List Corners to be Indexed
Corners Section Twp Range
NW. Cor. 12 - 74 - 26

W. 1/4 Cor. 12 - 74 - 26

FILED NO. 1510

BOOK 1 PAGE 250

94 DEC - 6 PM 1:58

MICHELLE UTSLER
RECORDER
MADISON COUNTY, IOWA

REC \$ 5.00

AUD \$ 1.00

R.M.F. \$ 1.00

