

UNITED STATES PUBLIC LAND SURVEY CORNER CERTIFICATE

93-131 S

OF

Land Survey Monuments situated in Section 25, Township 77 North, Range 28 West, of the Fifth Principal Meridian, MADISON County, Iowa. Previously recorded in N/A in County Recorder's Office.

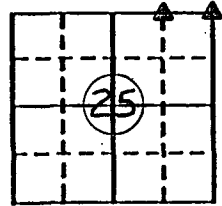
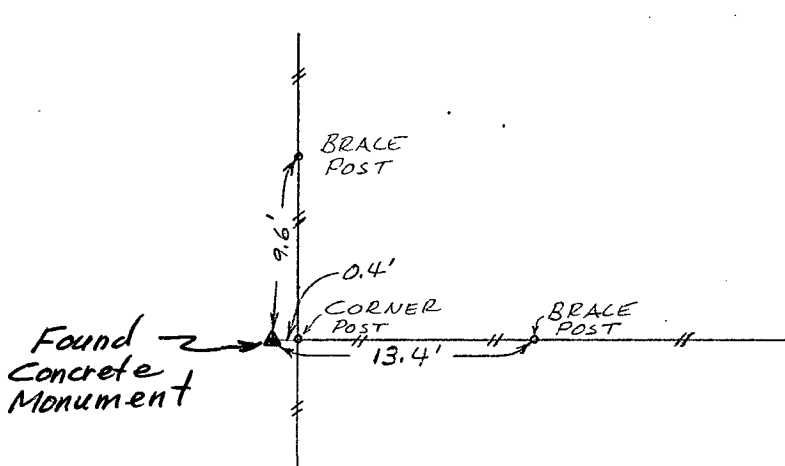
(book, page, document number, etc.)

(Show reason for preparing this certificate, the evidence and detailed procedures used in establishing the corner positions and monumentation found or placed.)

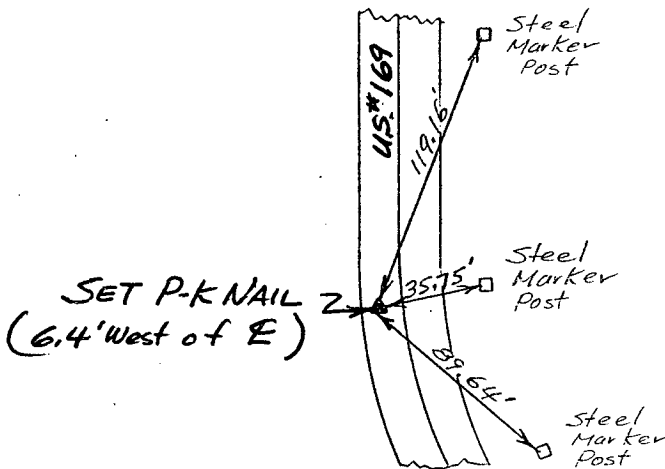
Monument Description and Remarks: Found and set Corners from D.O.T. Ref. Plats in County Engineers Office and information on previous survey plat.

PLAN - VIEW

(Show a minimum of three reference ties to durable physical objects, relevant monuments and physical conditions that will enable recovery of the corner.)



Ref. to NE. COR., SECTION 25, T77N, R28W.



Ref. to NW. COR., NE. 1/4 of NE. 1/4, SECTION 25, T77N, R28W.

I hereby certify that the survey work was completed and this certificate was prepared by me or under my direct personal supervision and that I am a duly registered land surveyor under the laws of the state of Iowa.

Signature: Charles T. Vance
Name typed or printed: Charles T. Vance, PE & LS
Date: 8 June 1994 Reg. No. 5041



Corners	List Corners to be Indexed		
	Section	Twp	Range
NE. COR.	25	77	28
NW. COR.	25	77	28
NE 1/4 NE 1/4	25	77	28

REC \$ 500
AUD \$ _____
R.M.F. \$ 100

COMPUTER
RECORDED
COMPARED

FILED NO. 322
BOOK 1 PAGE 236
94 AUG -2 PM 1:54
MICHELLE UTSLER
RECORDER
MADISON COUNTY, IOWA