

# UNITED STATES PUBLIC LAND SURVEY CORNER CERTIFICATE

OF

Land Survey Monuments situated in Section 1, Township 75 North, Range 28 West, of the Fifth Principal Meridian, Madison County, Iowa. Previously recorded in NA in County Recorder's Office.

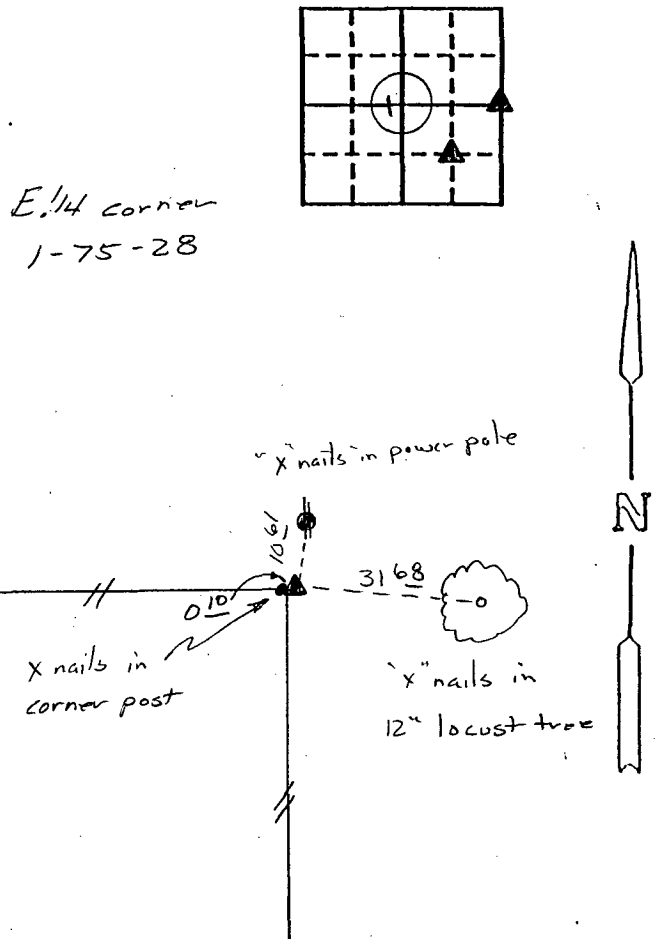
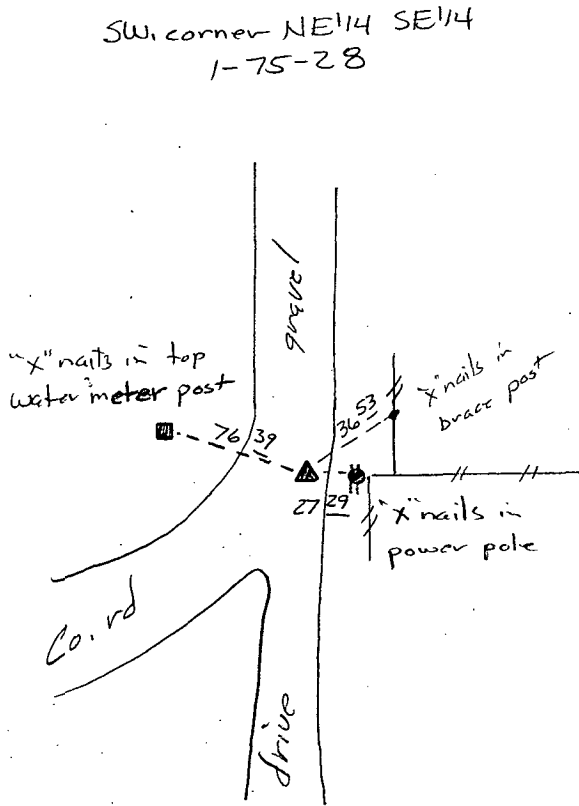
(book, page, document number, etc.)

(Show reason for preparing this certificate, the evidence and detailed procedures used in establishing the corner positions and monumentation found or placed.)

Monument Description and Remarks: E. 1/4 corner - set capped iron rod #6808  
S.W. corner of 1/4 NE 1/4 of the S.E. 1/4 - set capped iron rod #6808

## PLAN - VIEW

(Show a minimum of three reference ties to durable physical objects, relevant monuments and physical conditions that will enable recovery of the corner.)



I hereby certify that the survey work was completed and this certificate was prepared by me or under my direct personal supervision and that I am a duly registered land surveyor under the laws of the state of Iowa.

Signature: J M Hochstetler  
Name typed or printed:

Date: 7/19/94 Reg. No. 6808



SEAL

Corners	List Corners to be Indexed Section	Twp	Range
E 1/4 cor	1	75	28
SW cor NE SE	1	75	28

REC \$ 5.00  
AUD \$ \_\_\_\_\_  
R.M.F. \$ 1.00

FILED NO. 317

BOOK 1 PAGE 231

94 AUG -2 PM 1:49

COMPUTER   
RECORDED   
COMPARED

MICHELLE UTSLER  
RECORDER  
MADISON COUNTY, IOWA