

UNITED STATES PUBLIC LAND SURVEY CORNER CERTIFICATE

OF

Land Survey Monuments situated in Section 33, Township 77, Range 27, of the Fifth Principal Meridian, MADISON, County, Iowa.
 Previously recorded in _____ in County Recorder's Office.

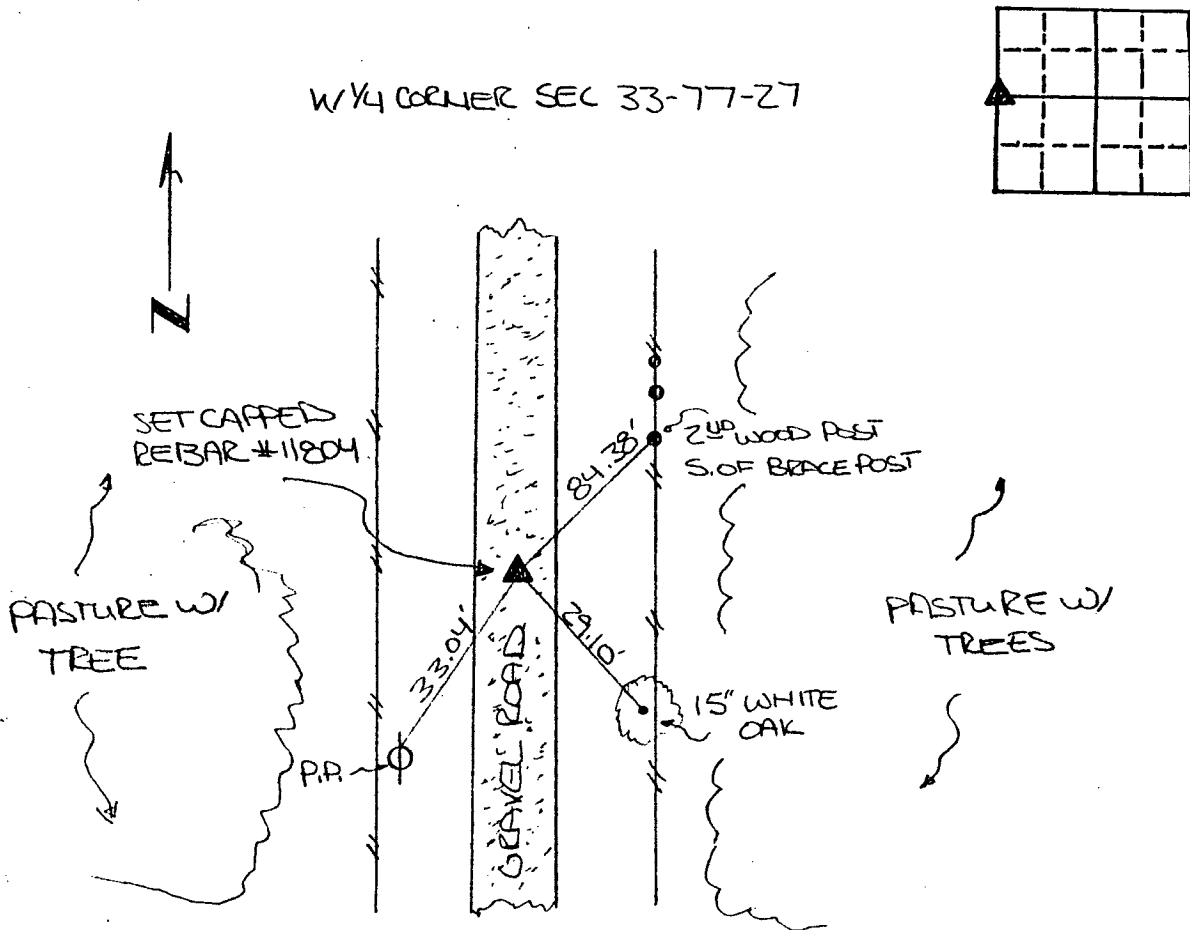
(book, page, document number, etc.)

(Show reason for preparing this certificate, the evidence and detailed procedures used in establishing the corner positions and monumentation found or placed.)

Monument Description and Remarks: CORNER ESTABLISHED BY SPLITTING THE DISTANCE BETWEEN THE N.W. CORNER & THE S.W. CORNER OF SECTION 33-77-27

PLAN - VIEW

(Show a minimum of three reference ties to durable physical objects, relevant monuments and physical conditions that will enable recovery of the corner.)



I hereby certify that the survey work was completed and this certificate was prepared by me or under my direct personal supervision and that I am a duly registered land surveyor under the laws of the state of Iowa.

Date 11-18-94
Michael G. Geier
 Michael G. Geier, L.S., Iowa Reg. No. 11804



SEAL

List Corners to be Indexed

| Corners | Section | Twp | Range |
|---------|---------|-----|-------|
| W/4 | 33 | 77 | 27 |

REC \$ 500
 AUD \$ _____
 R.M.F. \$ 100

FILED NO. 1483
 BOOK 1 PAGE 248
 94 DEC -2 AM 10:27

COMPUTER
 RECORDED
 COMPARED

MICHELLE UTSLER
 RECORDER
 MADISON COUNTY, IOWA