

UNITED STATES PUBLIC LAND SURVEY CORNER CERTIFICATE

94-163 S

OF

Land Survey Monuments situated in Section 2, Township 77 North, Range 28 West, of the Fifth Principal Meridian, Madison County, Iowa. Previously recorded in 11A in County Recorder's Office.

(book, page, document number, etc.)

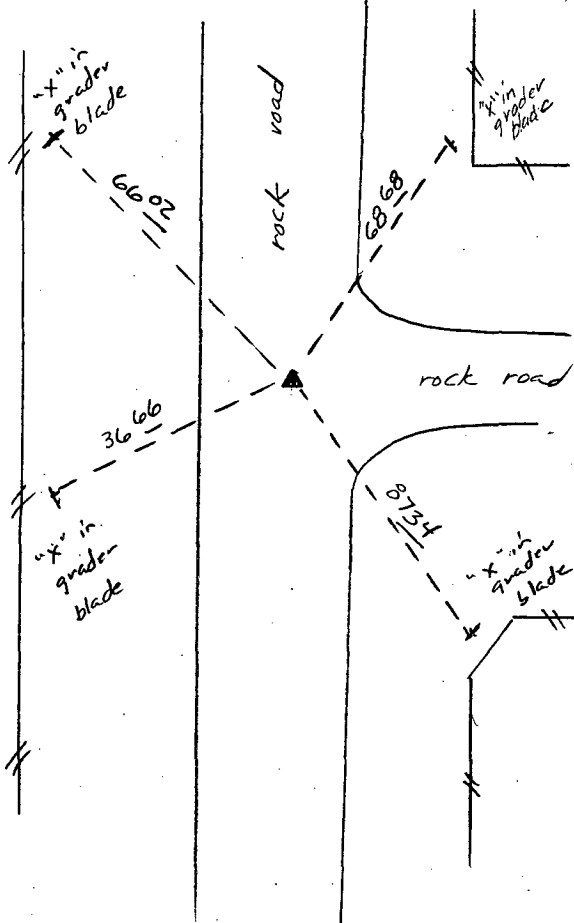
(Show reason for preparing this certificate, the evidence and detailed procedures used in establishing the corner positions and monumentation found or placed.)

Monument Description and Remarks: SW cor. NW1/4 SW1/4 - found 1/2" iron rod 3" deep with ties found in Madison County Engineers office
SE cor NW1/4 SW1/4 - searched @ apparent 1/4-1/4 sec line found carriage bolt 3" deep on fence line North

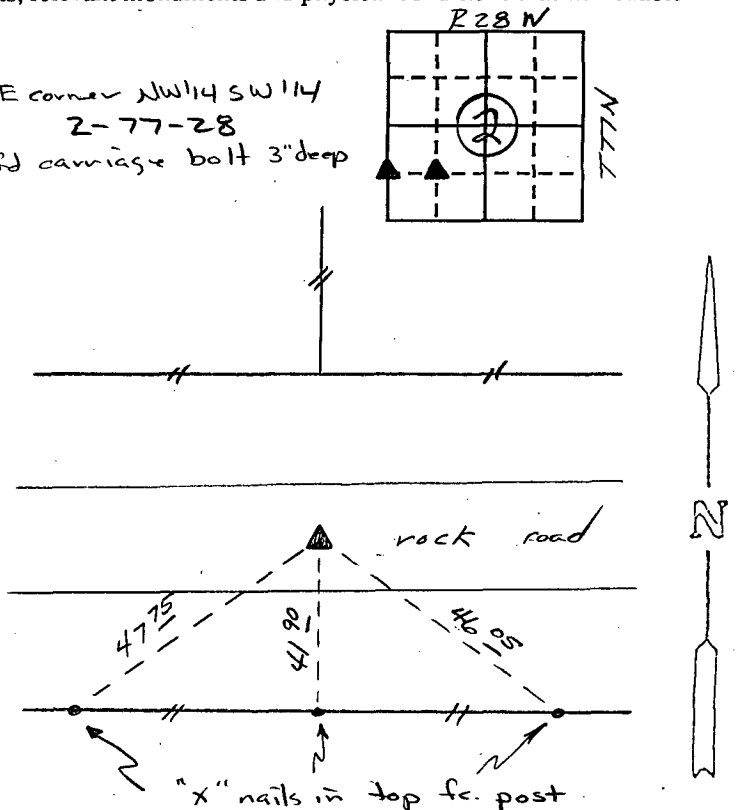
PLAN - VIEW

(Show a minimum of three reference ties to durable physical objects, relevant monuments and physical conditions that will enable recovery of the corner.)

SW corner NW1/4 SW1/4 2-77-28
fd 1/2" IR 3" deep



SE corner NW1/4 SW1/4
2-77-28
fd carriage bolt 3" deep

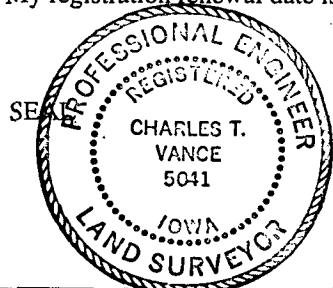


I hereby certify that the survey work was completed and this land surveying document was prepared by me or under my direct personal supervision and that I am a duly registered land surveyor under the laws of the state of Iowa

Signature: Charles T. Vance
Name typed or printed: Charles T. Vance

Date: 26 Oct. 1994 Reg. No. 5041

My registration renewal date is December 31, 1995



List Corners to be Indexed
Corners Section Twp Range

SW cor NW1/4 SW1/4 2 T77N R28W
SE cor NW1/4 SW1/4 2 T77N R28W

REC \$ 500
AUD \$
R.M.F. \$ 100

FILED NO. 1342
BOOK 1 PAGE 246

COMPUTER
RECORDED
COMPARED

94 NOV 15 AM 9:36
MICHELLE UTSLER
RECORDER
MADISON COUNTY, IOWA