

UNITED STATES PUBLIC LAND SURVEY CORNER CERTIFICATE

OF

Land Survey Monuments situated in Section 12, Township 77, Range 26, of the Fifth Principal Meridian, MADISON County, Iowa. Previously recorded in N/A in County Recorder's Office.

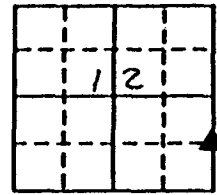
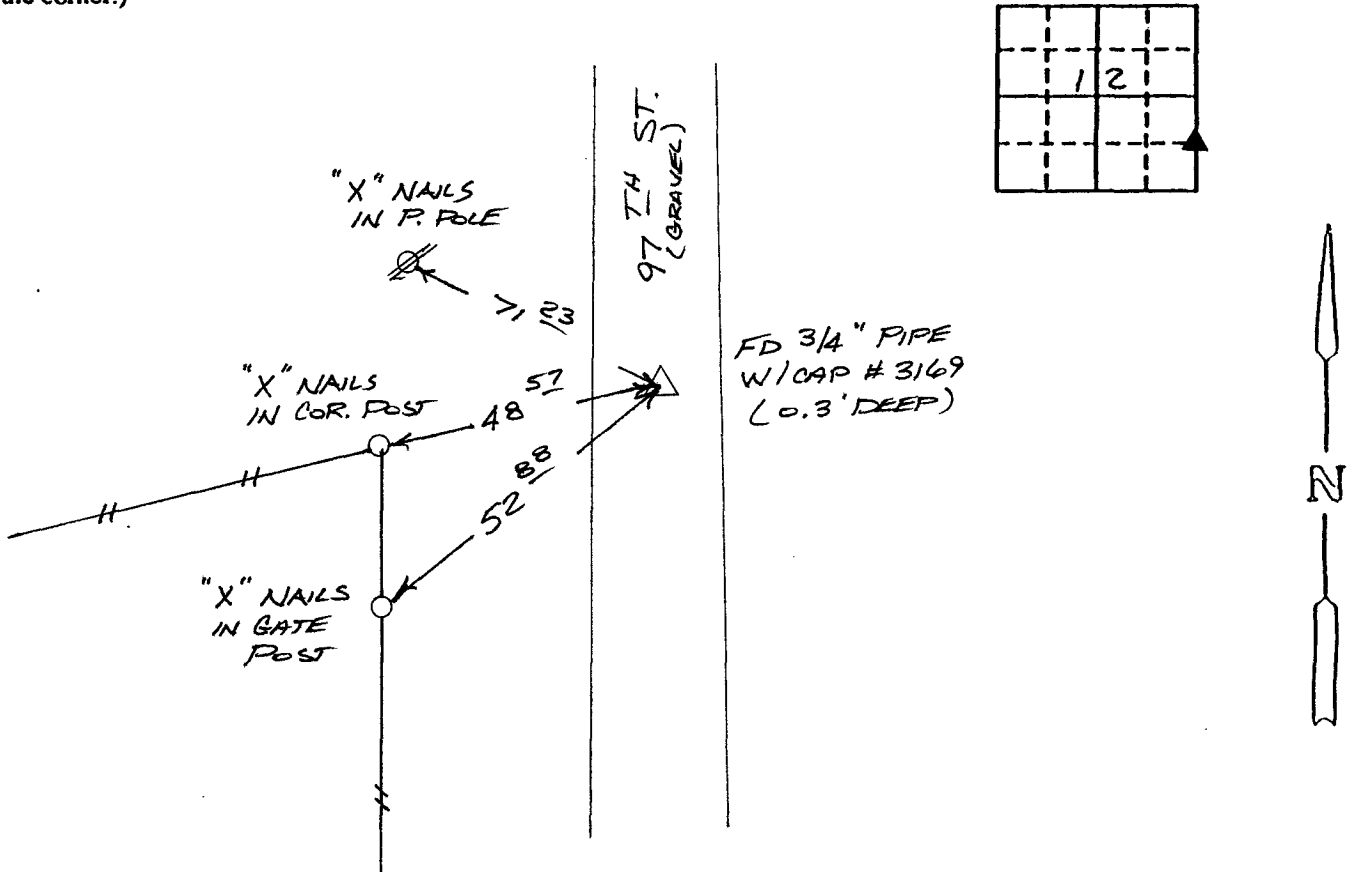
(book, page, document number, etc.)

(Show reason for preparing this certificate, the evidence and detailed procedures used in establishing the corner positions and monumentation found or placed.)

Monument Description and Remarks: CONFIRMED FOUND 3/4" PIPE W/CAP #3169 AT THE SE COR., NE 1/4, SE 1/4, 12-77-26 TO BE ON LINE AND EQUIDISTANT FROM THE E 1/4 COR. 12-77-26 AND THE SE 1/4 COR. 12-77-26.

PLAN - VIEW

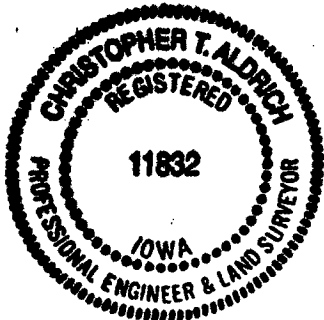
(Show a minimum of three reference ties to durable physical objects, relevant monuments and physical conditions that will enable recovery of the corner.)



I hereby certify that the survey work was completed and this certificate was prepared by me or under my direct personal supervision and that I am a duly registered land surveyor under the laws of the state of Iowa.

Signature: Christopher T. Aldrich
Name typed or printed: CHRISTOPHER T. ALDRICH

Date: 11-7-94 Reg. No. 11832



SEAL

Corners	List Corners to be Indexed Section	Twp	Range
SE COR, NE 1/4, SE 1/4	12	77	26

FILED NO. 1289

BOOK 1 PAGE 245

94 NOV -8 AM 10:08

MICHELLE UTSLER
RECORDER
MADISON COUNTY, IOWA

COMPUTER
RECORDED
COMPARED

REC \$ 5.00
AUD \$ 1.00
R.M.F. \$ 1.00