

UNITED STATES PUBLIC LAND SURVEY CORNER CERTIFICATE

94-755

OF

Land Survey Monuments situated in Section 25, Township 76 North, Range 28 West, of the Fifth Principal Meridian, Madison County, Iowa. Previously recorded in N/A in County Recorder's Office.

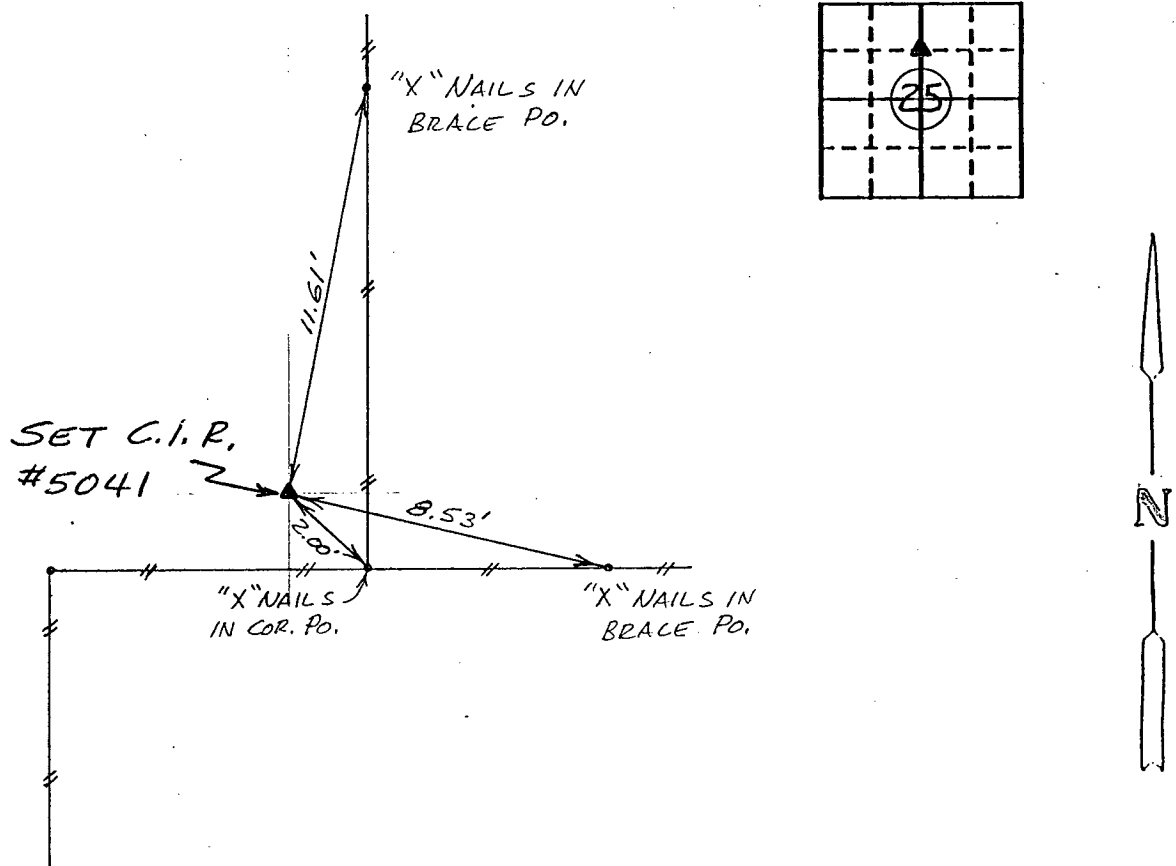
(book, page, document number, etc.)

(Show reason for preparing this certificate, the evidence and detailed procedures used in establishing the corner positions and monumentation found or placed.)

Monument Description and Remarks: _____

PLAN - VIEW

(Show a minimum of three reference ties to durable physical objects, relevant monuments and physical conditions that will enable recovery of the corner.)



Ref. to NE. COR, SE. 1/4 NW. 1/4 SECTION 25, T76N, R28W

I hereby certify that the survey work was completed and this certificate was prepared by me or under my direct personal supervision and that I am a duly registered land surveyor under the laws of the state of Iowa.

Signature: Charles T. Vance
Name typed or printed: Charles T. Vance, PE & LS

Date: 27 Sept. 1994 Reg. No. 5041

Corners	Section	Twp	Range
NE. COR			
SE. 1/4 NW. 1/4	25	76	28

COMPUTER
RECORDED
COMPARED

FILED NO. 1243

BOOK 1 PAGE 244

94 NOV -2 PM 3:08

MICHELLE UTSLER
RECORDER
MADISON COUNTY, IOWA

REC \$ 5.00

AUD \$ _____

R.M.F. \$ 1.00

