

UNITED STATES PUBLIC LAND SURVEY CORNER CERTIFICATE

OF

Land Survey Monuments situated in Section 7, Township 76 North, Range 28 West, of the Fifth Principal Meridian, Madison County, Iowa. Previously recorded in N/A in County Recorder's Office.

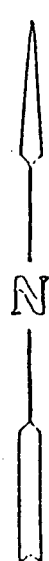
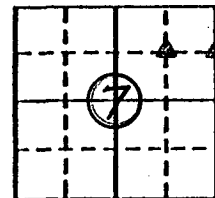
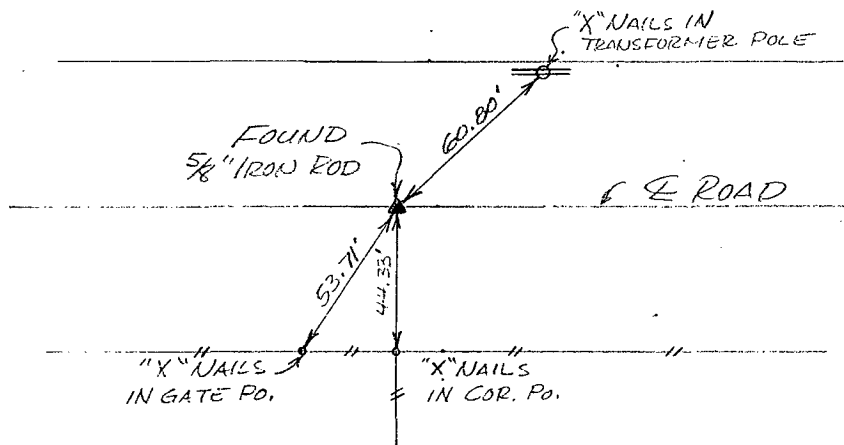
(book, page, document number, etc.)

(Show reason for preparing this certificate, the evidence and detailed procedures used in establishing the corner positions and monumentation found or placed.)

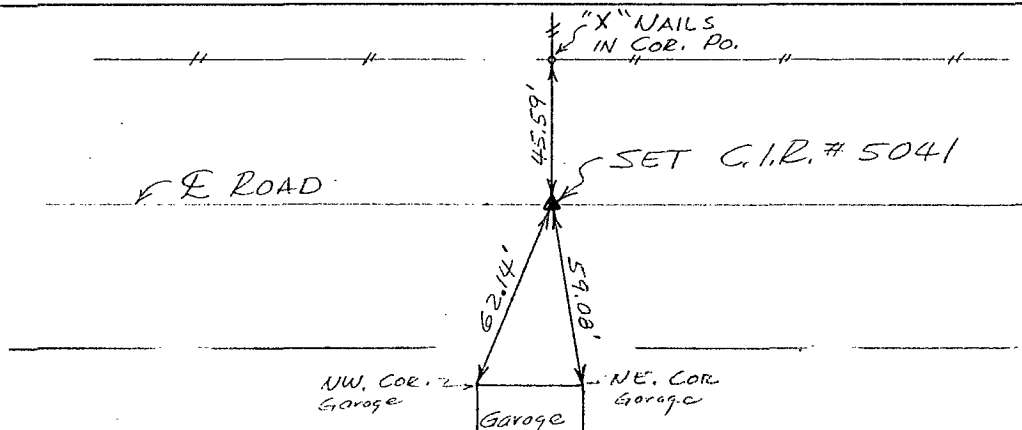
Monument Description and Remarks: Found 5/8" Iron Rod and Set C.I.R. # 5041 as shown below.

PLAN - VIEW

(Show a minimum of three reference ties to durable physical objects, relevant monuments and physical conditions that will enable recovery of the corner.)



Ref. to NE. COR., SE. 1/4 NE. 1/4, SECTION 7, T76N, R28W.



Ref. to NE. COR., SW. 1/4 NE. 1/4, SECTION 7, T76N, R28W.

I hereby certify that the survey work was completed and this certificate was prepared by me or under my direct personal supervision and that I am a duly registered land surveyor under the laws of the state of Iowa.

Signature: Charles T. Vance
Name typed or printed: Charles T. Vance, PE & LS

Date: 1 June 1994 Reg. No. 5041

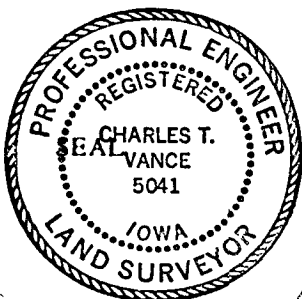
Corners	List Corners to be Indexed	Section	Twp	Range
NE. COR., SE. 1/4 NE. 1/4		7	76	28
NE. COR., SW. 1/4 NE. 1/4		7	76	28

FILED NO. 3391

BOOK 1 PAGE 217

94 JUN -7 PM 1:29

MICHELLE UTSLER
RECORDER
MADISON COUNTY, IOWA



COMPUTER
 RECORDED
 COMPARED

REC \$ 5.00
 AUD \$
 R.M.F. \$ 1.00