

UNITED STATES PUBLIC LAND SURVEY CORNER CERTIFICATE

OF

Land Survey Monuments situated in Section 19, Township 75 North, Range 26 West, of the Fifth Principal Meridian, MADISON County, Iowa. Previously recorded in N/A in County Recorder's Office.

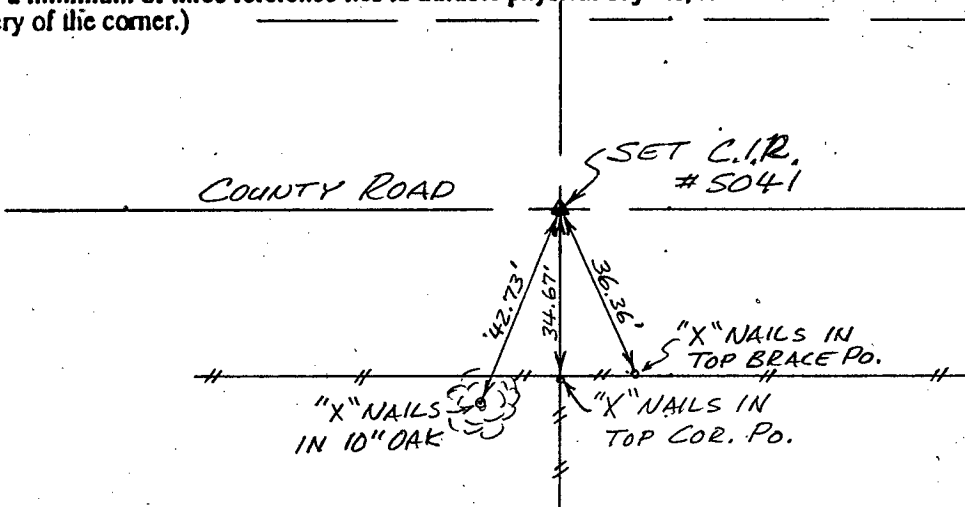
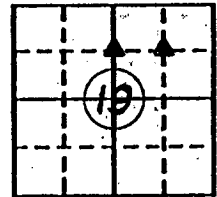
(book, page, document number, etc.)

(Show reason for preparing this certificate, the evidence and detailed procedures used in establishing the corner positions and monumentation found or placed.)

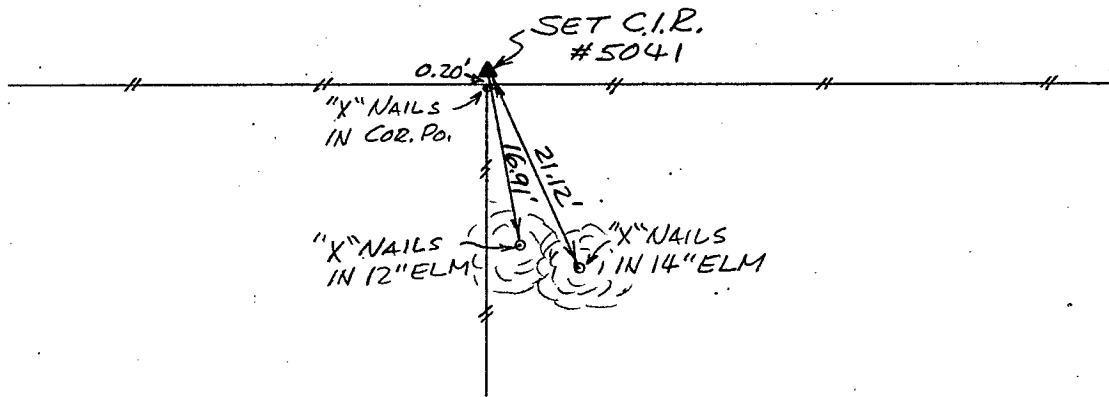
Monument Description and Remarks: Set C.I.R. #5041 at Corners per previous survey and physical evidence at each site.

PLAN - VIEW

(Show a minimum of three reference ties to durable physical objects, relevant monuments and physical conditions that will enable recovery of the corner.)



Ref. to SE. COR., NW. 1/4 NE. 1/4, SECTION 19, T75N, R26W.

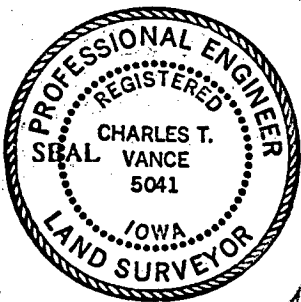


Ref. to SW. COR., NW. 1/4 NE. 1/4, SECTION 19, T75N, R26W

I hereby certify that the survey work was completed and this certificate was prepared by me or under my direct personal supervision and that I am a duly registered land surveyor under the laws of the state of Iowa.

Signature: Charles T. Vance
Name typed or printed: Charles T. Vance, PE & LS

Date: 14 June 1994 Reg. No. 5041



Corners	Section	Twp	Range
SE. COR. NW. 1/4 NE. 1/4			19 - 75 - 26
SW. COR. NW. 1/4 NE. 1/4			19 - 75 - 26

REC \$ 5.00
AUD \$ _____
R.M.F. \$ 1.00

FILED NO. 316

BOOK 1 PAGE 230

94 AUG -2 PM 1:48

COMPUTER
RECORDED
COMPARED

MICHELLE UTSLER
RECORDER
MADISON COUNTY, IOWA