

UNITED STATES PUBLIC LAND SURVEY CORNER CERTIFICATE

OF

Land Survey Monuments situated in Section 15, Township 76 N, Range 29 W, of the Fifth Principal Meridian, Madison County, Iowa.
Previously recorded in NA in County Recorder's Office.

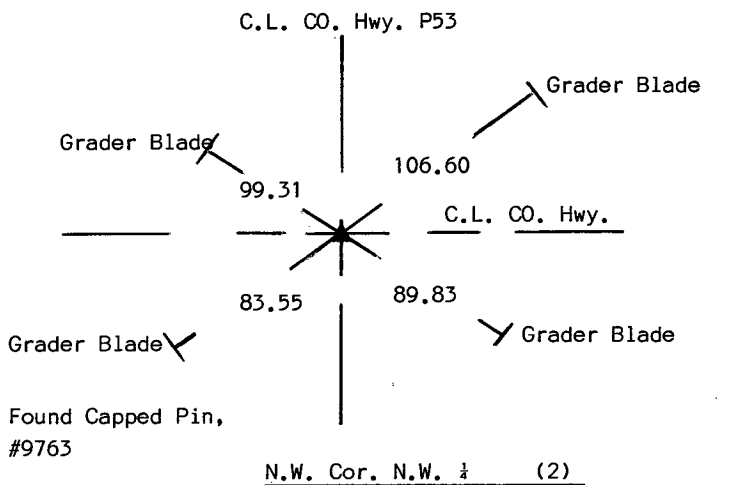
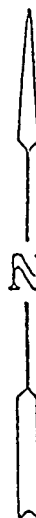
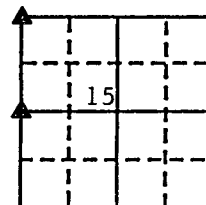
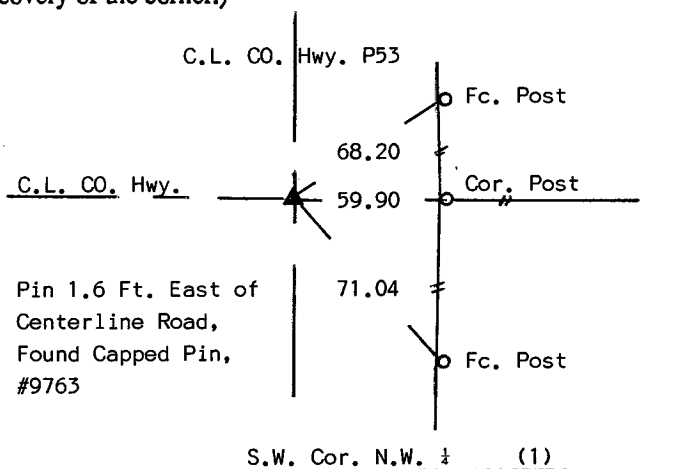
(book, page, document number, etc.)

(Show reason for preparing this certificate, the evidence and detailed procedures used in establishing the corner positions and monumentation found or placed.)

Monument Description and Remarks: (1) and (2) Found capped pins reset from ties in County Engineer's Office by R.L.S. #9763.

PLAN - VIEW

(Show a minimum of three reference ties to durable physical objects, relevant monuments and physical conditions that will enable recovery of the corner.)



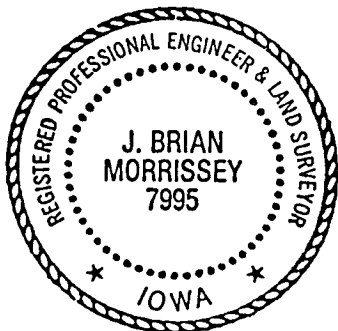
Note: (1) Ties "x" nails
(2) Ties "x" cut in grader blades

I hereby certify that the survey work was completed and this certificate was prepared by me or under my direct personal supervision and that I am a duly registered land surveyor under the laws of the state of Iowa. My registration renewal date is 12/31/95.

Signature: J. Brian Morrissey
Name typed or printed: J. Brian Morrissey

Date: July 26, 1994 Reg. No. 7995

SEAL



Corners	List Corners to be Indexed Section	Twp	Range
S.W. N.W. 1/4	15	76 N	29 W
N.W. N.W. 1/4	15	76 N	29 W

FILED NO. 241

BOOK 1 PAGE 227

94 JUL 27 AM 10: 24

MICHELLE UTSLER
RECORDER
MADISON COUNTY, IOWA

COMPUTER
RECORDED
COMPARED

REC \$ No Fee
AUD \$ _____
R.M.F. \$ _____