

UNITED STATES PUBLIC LAND SURVEY CORNER CERTIFICATE

OF

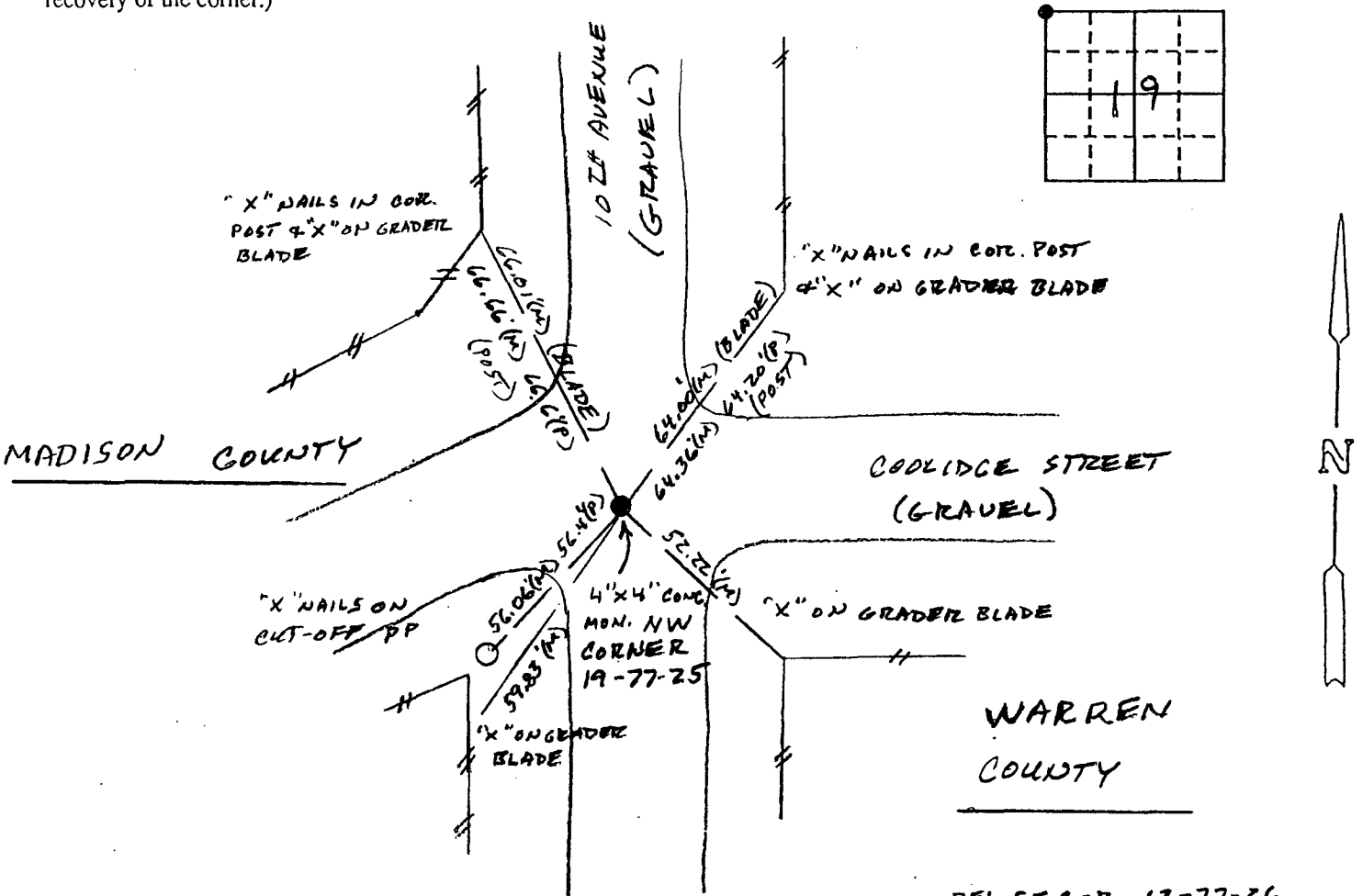
Land Survey Monuments situated in Section 19, Township 77 North, Range 25 West, of the Fifth Principal Meridian, Warren County, Iowa. Previously recorded in Does Not Apply in County Recorder's Office.

(Show reason for preparing this certificate, the evidence and detailed procedures used in establishing the corner positions and monumentation found or placed.)

Monument Description and Remarks: No current corner certificate.
Found a 4" x 4" concrete monument 1.2' deep from ties obtained from the Warren County Engineer's office. The monument agreed with record dimensions to section corners to the east.

PLAN - VIEW

(Show a minimum of three reference ties to durable physical objects, relevant monuments and physical conditions that will enable recovery of the corner.)



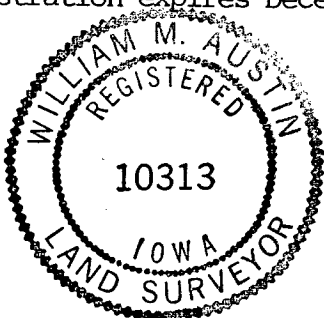
RE: SE COR 13-77-26
NE COR 24-77-26
SW COR 18-77-25

(M) = Measured dimension (P) = Record dimension

I hereby certify that the survey work was completed and this certificate was prepared by me or under my direct personal supervision and that I am a duly registered land surveyor under the laws of the state of Iowa.

Signature: William M. Austin
Name typed or printed: William M. Austin
Date: 3-18-94 Reg. No. 10313

My registration expires December 31, 19 95.



Corners	List Corners to be Indexed Section	Twp	Range
NW COR	19	77 N	25 W

COMPUTER
RECORDED
COMPARED

FILED NO. 2486

BOOK 1 PAGE 203

94 MAR 22 AM 10:24

MICHELLE UTSLER
RECORDER
MADISON COUNTY, IOWA

REC \$ 5.00
AUDS
R.M.F. \$ 1.00