

UNITED STATES PUBLIC LAND SURVEY CORNER CERTIFICATE

OF

Land Survey Monuments situated in Section 1, Township 74 North, Range 27 West, of the Fifth Principal Meridian, MADISON County, Iowa.
Previously recorded in N/A in County Recorder's Office.

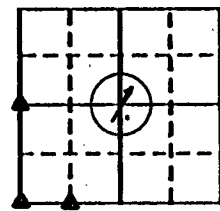
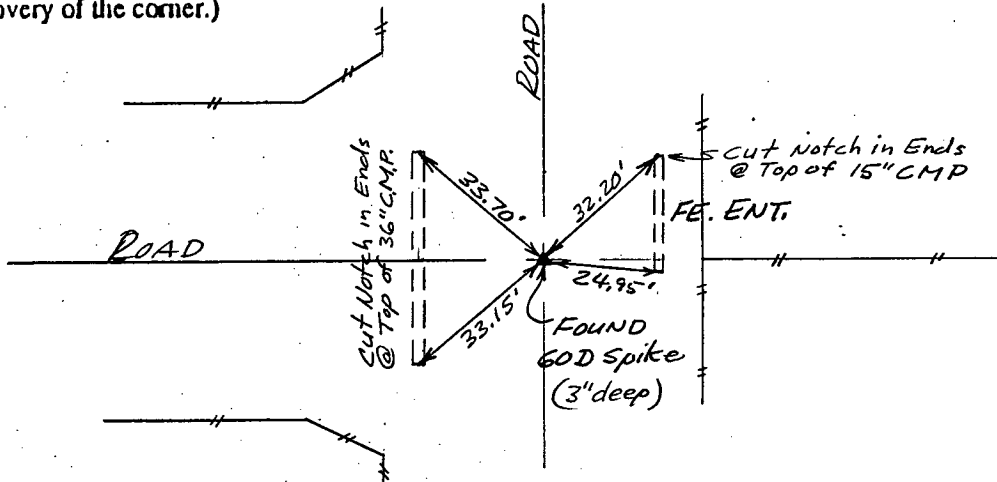
(book, page, document number, etc.)

(Show reason for preparing this certificate, the evidence and detailed procedures used in establishing the corner positions and monumentation found or placed.)

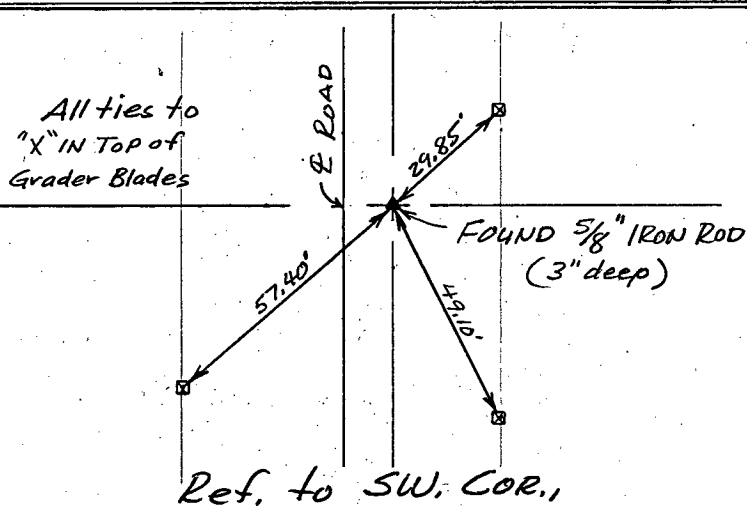
Monument Description and Remarks: Found corners as noted below and set 1/4 1/4 cor based on survey information and evidence at site.

PLAN - VIEW

(Show a minimum of three reference ties to durable physical objects, relevant monuments and physical conditions that will enable recovery of the corner.)

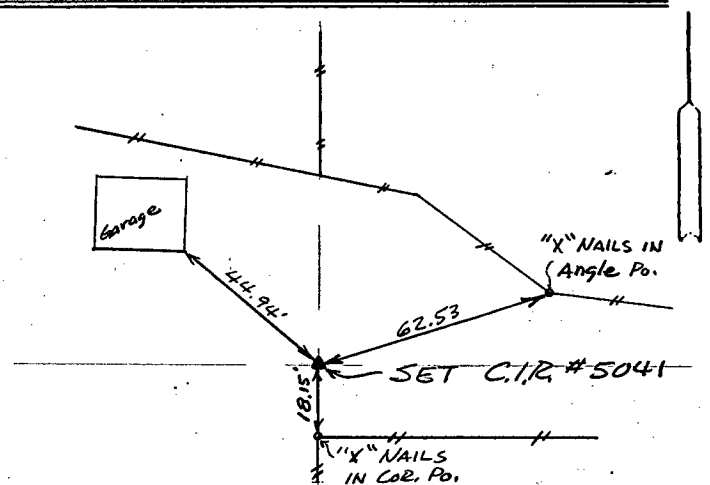


Ref. to W. 1/4 COR., SECTION 1, T74N, R27W.



Ref. to SW. COR.,

SECTION 1, T74N, R27W.



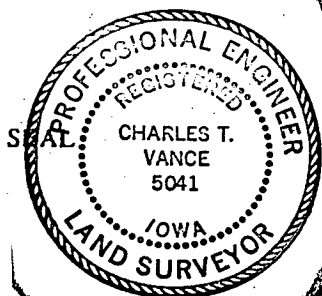
Ref. to SE. COR., SW. 1/4 SW. 1/4,
SECTION 1, T74N, R27W

I hereby certify that the survey work was completed and this certificate was prepared by me or under my direct personal supervision and that I am a duly registered land surveyor under the laws of the state of Iowa.

Signature: Charles T. Vance

Name typed or printed: Charles T. Vance, PE & LS

Date: 30 Dec. 1993 Reg. No. 5041



COMPUTER ☒
RECORDED ☒
COMPARED ☒

List Corners to be Indexed
Corners Section Twp Range

W. 1/4 COR. 1 - 74 - 27

SW. COR. 1 - 74 - 27

SE. COR. 1 - 74 - 27
SW. 1/4 SW. 1/4

FILED NO. 1935

BOOK 1 PAGE 197

94 JAN 21 AM 10:18

MICHELLE UTSLER
RECORDER
MADISON COUNTY, IOWA

REC \$ 5.00
AUD \$ 1.00
R.M.F. \$ 1.00