

UNITED STATES PUBLIC LAND SURVEY CORNER CERTIFICATE

OF

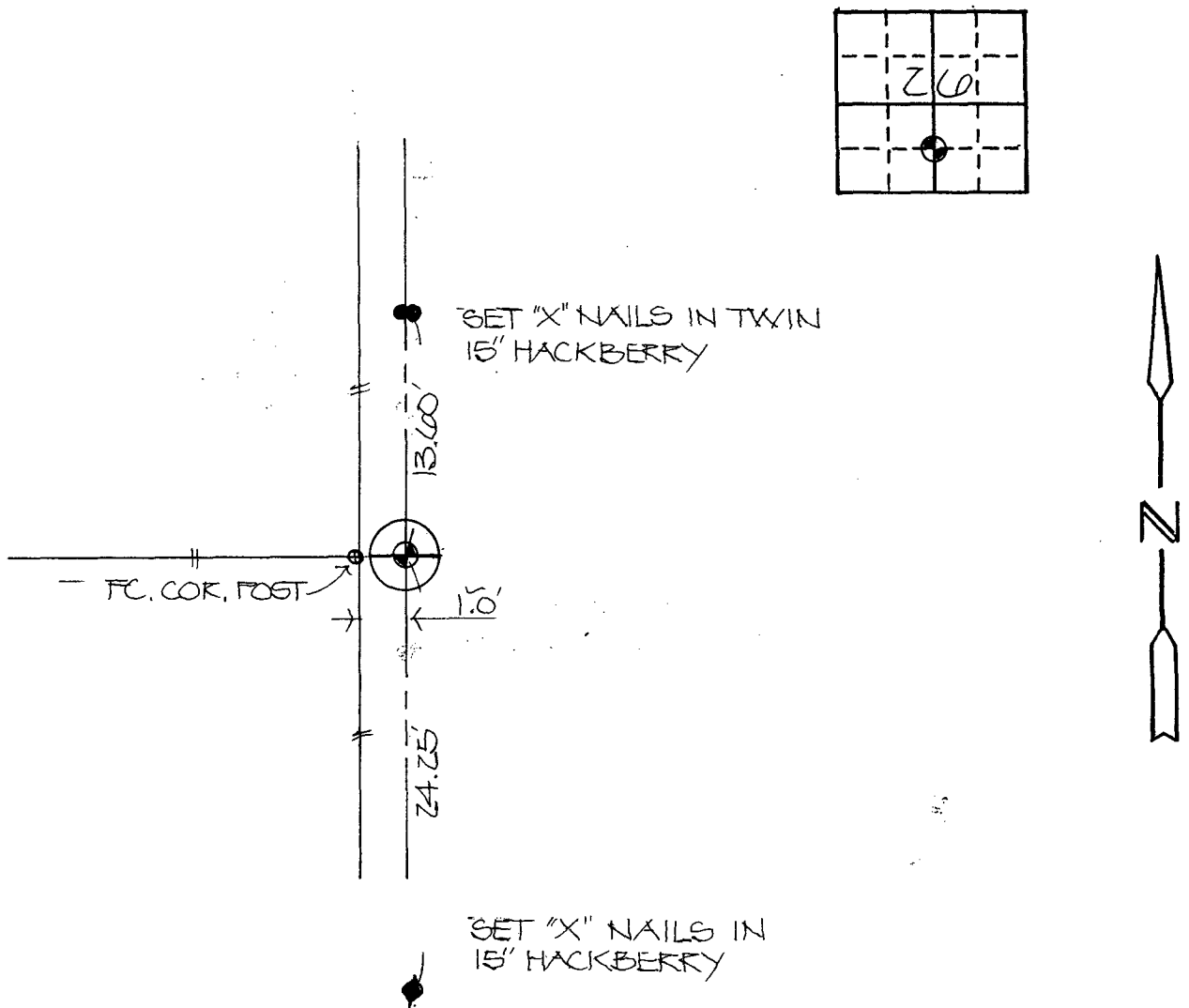
Land Survey Monuments situated in Section 26, Township 77, Range 27, of the Fifth Principal Meridian, MADISON County, Iowa. Previously recorded in Book _____, Page _____.

(Show reason for preparing this certificate, the evidence and detailed procedures used in establishing the corner positions and monumentation found or placed).

Monument Description and Remarks: FOUND STONE (4"x5" LIMESTONE)
1' EAST OF FENCE COR. POST.

PLAN-VIEW

(Show a minimum of three reference ties to durable physical objects, relevant monuments and physical conditions that will enable recovery of the corner.)



I hereby certify that the survey work was completed and this certificate was prepared by me or under my direct personal supervision and that I am a duly registered land surveyor under the laws of the state of Iowa.

Barry A. Bishop
Registered Land Surveyor No. 3169

SEAL



List Corners to be indexed

Corners	Section	Twp	Range
S.E. COR. NE 1/4 - SW 1/4	26	77	27

COMPUTER
RECORDED
COMPARED

REC \$ 5.00
AUD \$ _____
R.M.F. \$ 1.00

FILED NO. 1804
BOOK 1 PAGE 195

94 JAN 10 PM 3:49

MICHELLE UTSLER
RECORDER
MADISON COUNTY, IOWA