

UNITED STATES PUBLIC LAND SURVEY CORNER CERTIFICATE

OF

Land Survey Monuments situated in Section 31, Township 75 North, Range 27 West, of the Fifth Principal Meridian, Madison County, Iowa. Previously recorded in N/A in County Recorder's Office.

(book, page, document number, etc.)

(Show reason for preparing this certificate, the evidence and detailed procedures used in establishing the corner positions and monumentation found or placed.)

Monument Description and Remarks: Found lead plug at SW. Cor. Sec. 31;
Set P-K nails at SE. Cor., SW 1/4 SW 1/4 and S. 1/4 Cor. Sec 31,
T75N, R27W from information shown on H.W.Y. #307 road plans.

PLAN - VIEW

(Show a minimum of three reference ties to durable physical objects, relevant monuments and physical conditions that will enable recovery of the corner.)

REC \$ 5.00

AUD \$ _____

R.M.F. \$ 1.00

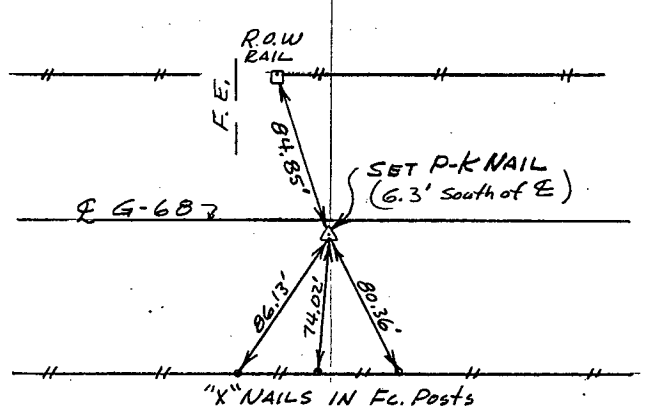
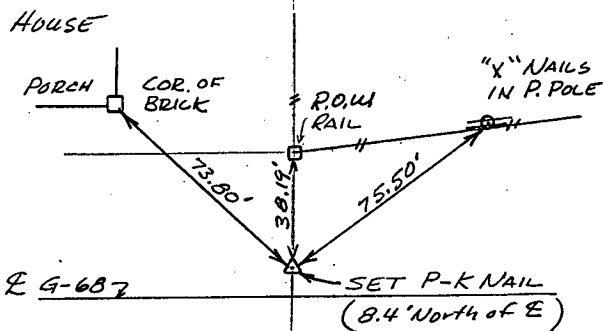
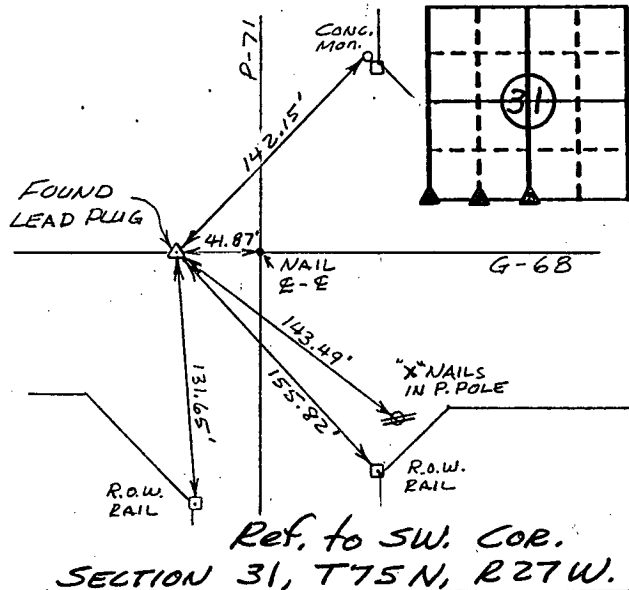
FILED NO. 1557

BOOK 1 PAGE 189

93 DEC 16 PM 2:59

MICHELLE UTSLER
RECORDER
MADISON COUNTY, IOWA

COMPUTER
RECORDED
COMPARED



I hereby certify that the survey work was completed and this certificate was prepared by me or under my direct personal supervision and that I am a duly registered land surveyor under the laws of the state of Iowa.

Signature: Charles T. Vance
Name typed or printed: Charles T. Vance, PE & LS
Date: 22 Nov. 1993 Reg. No. 5041

Corners	Section	Twp	Range
SW. Cor.	31	75	27
SE. Cor.	31	75	27
SW 1/4 SW 1/4	31	75	27
S. 1/4 Cor.	31	75	27

