

UNITED STATES PUBLIC LAND SURVEY CORNER CERTIFICATE

OF

Land Survey Monuments situated in Section 30, Township 77 North, Range 29 West, of the Fifth Principal Meridian, Madison County, Iowa.
Previously recorded in _____ in County Recorder's Office.

(book, page, document number, etc.)

(Show reason for preparing this certificate, the evidence and detailed procedures used in establishing the corner positions and monumentation found or placed.)

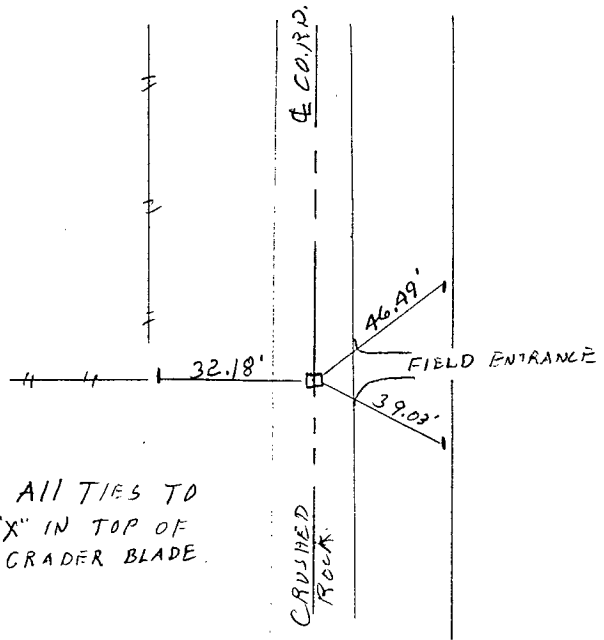
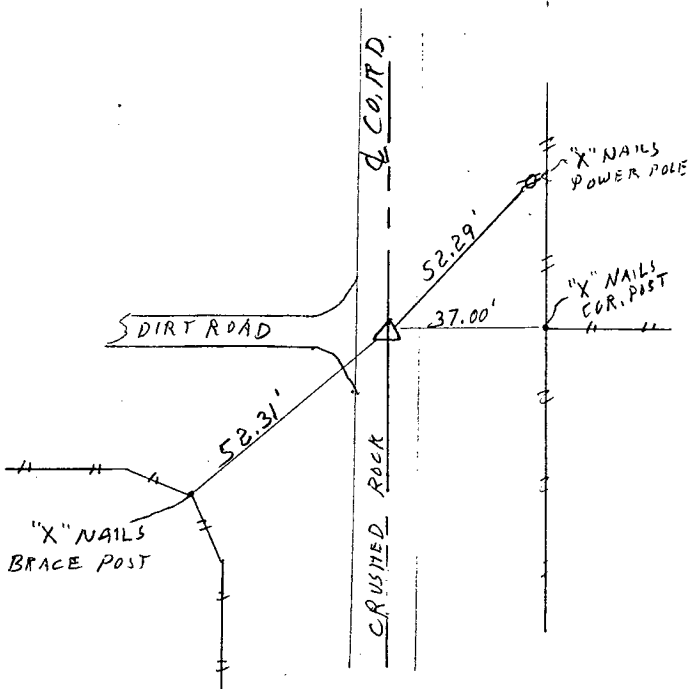
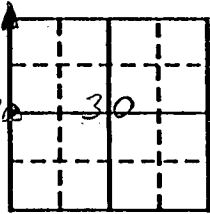
Monument Description and Remarks: SEE BELOW

PLAN - VIEW

(Show a minimum of three reference ties to durable physical objects, relevant monuments and physical conditions that will enable recovery of the corner.)

NW Cor. Sec. 30-77-29
FOUND 20d. Nail 4" deep.

W 1/4 Cor SEC. 30-77-29
FOUND C.I.R. #7044
4" deep.



I hereby certify that the survey work was completed and this certificate was prepared by me or under my direct personal supervision and that I am a duly registered land surveyor under the laws of the state of Iowa.

Signature: J. M. Hochstetler
Name typed or printed: J. M. Hochstetler

Date: 11/11/93 Reg. No. 6808



SEAL

Corners	List Corners to be Indexed		
	Section	Twp	Range
NW	30	77	29
W 1/4	30	77	29

No Fee

FILED NO. 1256

BOOK 1 PAGE 188

93 NOV 12 PM 2:23

MICHELLE UTSLER
RECORDER
MADISON COUNTY, IOWA

- COMPUTER
- RECORDED
- COMPARED