

UNITED STATES PUBLIC LAND SURVEY CORNER CERTIFICATE

OF

Land Survey Monuments situated in Section 13, Township 75 North, Range 26 West, of the Fifth Principal Meridian, MADISON County, Iowa. Previously recorded in N/A in County Recorder's Office.

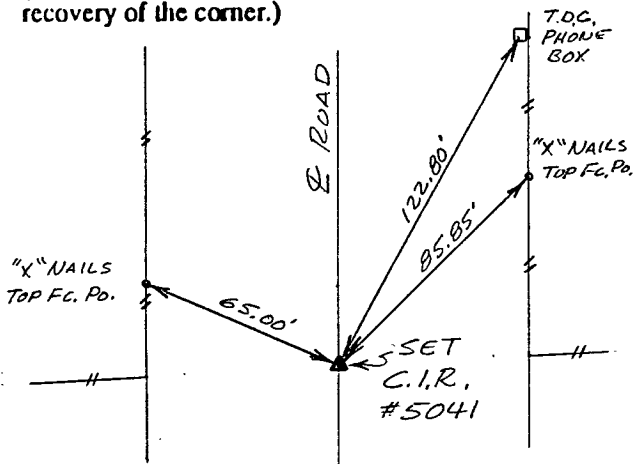
(book, page, document number, etc.)

(Show reason for preparing this certificate, the evidence and detailed procedures used in establishing the corner positions and monumentation found or placed.)

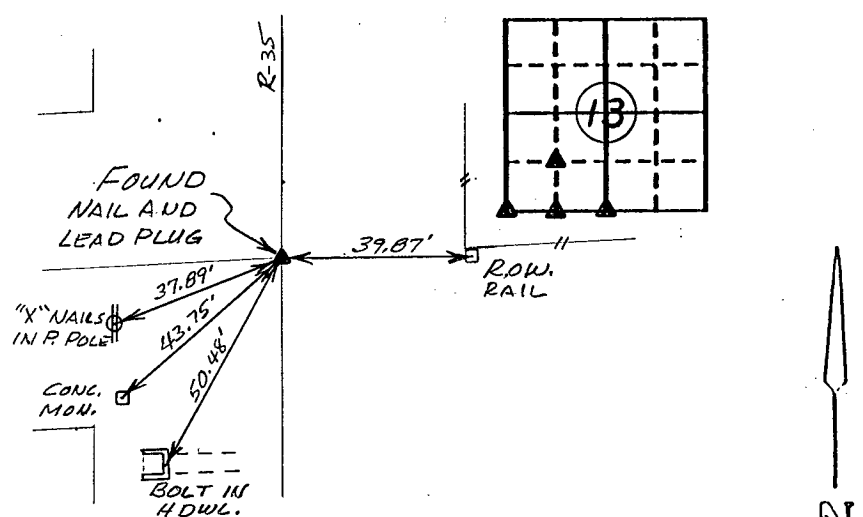
Monument Description and Remarks: See below

PLAN - VIEW

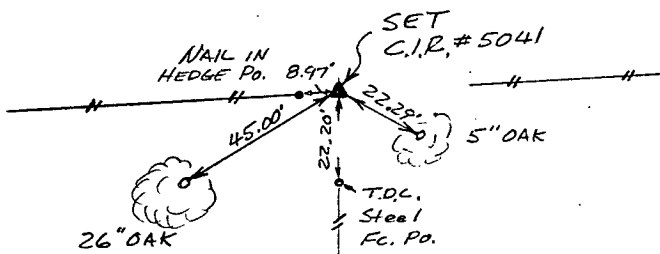
(Show a minimum of three reference ties to durable physical objects, relevant monuments and physical conditions that will enable recovery of the corner.)



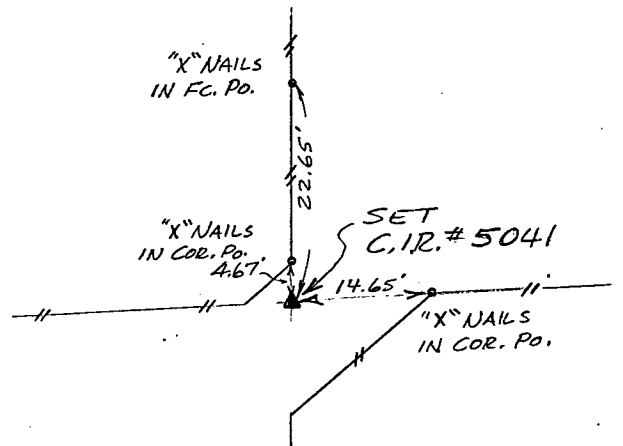
Ref. to NE. COR., SW. 1/4 SW. 1/4 SECTION 13, T75N, R26W.



Ref. to SW. COR., SECTION 13, T75N, R26W



Ref. to SE. COR., SW. 1/4 SW. 1/4 SECTION 13, T75N, R26W.



Ref. to S. 1/4 COR., SECTION 13, T75N, R26W

I hereby certify that the survey work was completed and this certificate was prepared by me or under my direct personal supervision and that I am a duly registered land surveyor under the laws of the state of Iowa.

Signature: Charles T. Vance

Name typed or printed: Charles T. Vance, PE & LS

Date: 6 Oct. 1993 Reg. No. 5041

1175

FILED NO. _____

BOOK 1 PAGE 187

93 NOV -3 AM 8:11

MICHELLE UTSLER
RECORDER
MADISON COUNTY, IOWA

Fee \$6.00

Corners	Section	Twp	Range
NE. COR	13	75	26
SW 1/4 SW 1/4	13	75	26
SW. COR.	13	75	26
SE. COR.	13	75	26
SW. 1/4 SW. 1/4	13	75	26
S. 1/4 COR.	13	75	26

COMPUTER
RECORDED
COMPARED

