

# UNITED STATES PUBLIC LAND SURVEY CORNER CERTIFICATE

OF

Land Survey Monuments situated in Section 1, Township 77 NORTH, Range 26 WEST, of the Fifth Principal Meridian, MADISON County, Iowa. Previously recorded in \_\_\_\_\_ in County Recorder's Office.

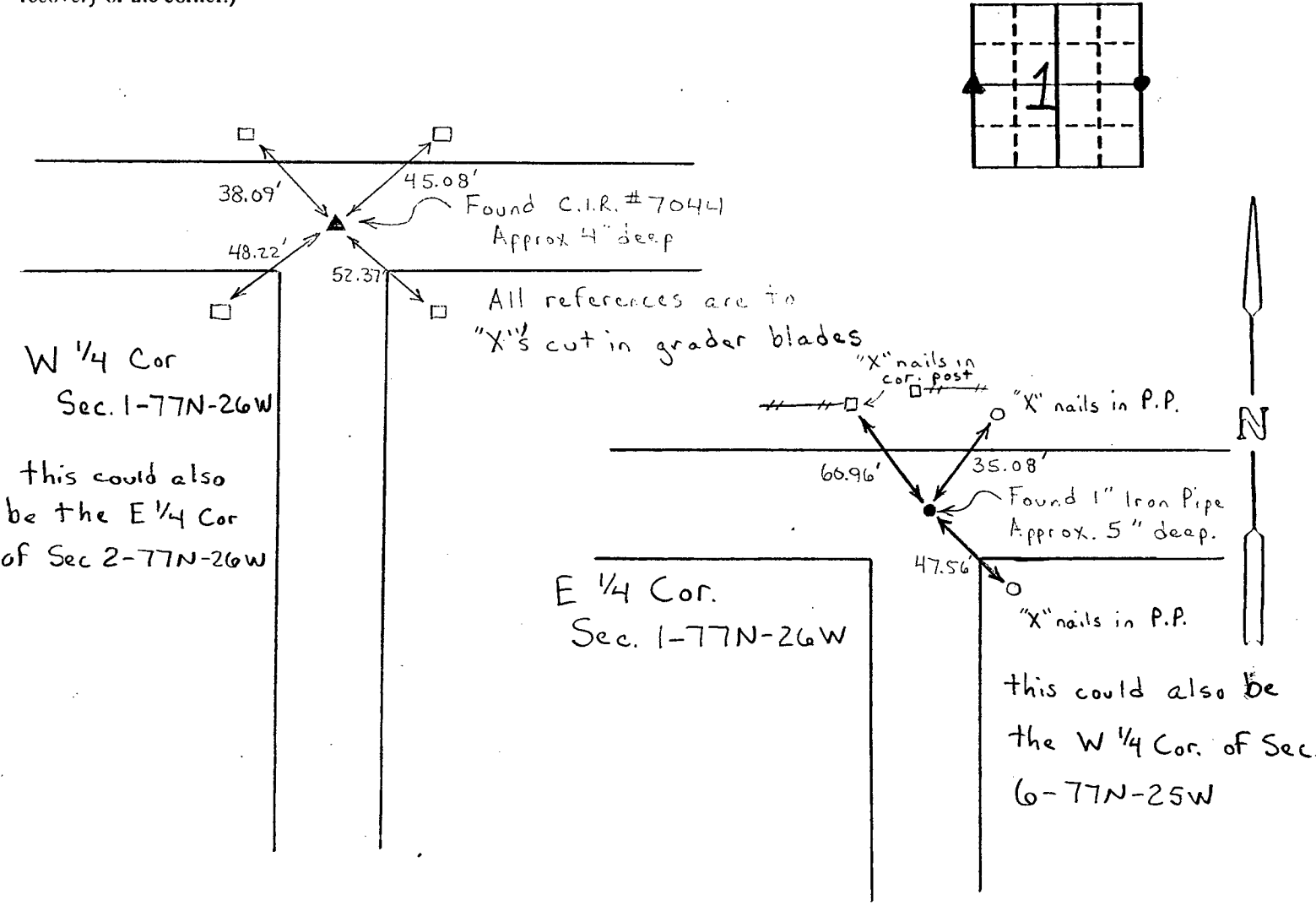
(book, page, document number, etc.)

(Show reason for preparing this certificate, the evidence and detailed procedures used in establishing the corner positions and monumentation found or placed.)

Monument Description and Remarks: Used 1980 references to Find West 1/4 Corner. Reference nails for East 1/4 corner were found in the power poles, and a third reference was set at this time.

### PLAN - VIEW

(Show a minimum of three reference ties to durable physical objects, relevant monuments and physical conditions that will enable recovery of the corner.)



I hereby certify that the survey work was completed and this certificate was prepared by me or under my direct personal supervision and that I am a duly registered land surveyor under the laws of the state of Iowa.

Signature: James M Hochstetler  
Name typed or printed: James M Hochstetler, PE & LS  
Date: 10/8/93 Reg. No. 6808



SEAL

Corners	List Corners to be Indexed Section	Twp	Range
▲ WEST 1/4	1	77N	26W
● EAST 1/4	1	77N	26W

FILED NO. 923  
BOOK 1 PAGE 184  
93 OCT -8 PM 1:46  
MICHELLE UTSLER  
RECORDER  
MADISON COUNTY, IOWA  
Fee \$6.00

COMPUTER   
RECORDED   
COMPARED