

UNITED STATES PUBLIC LAND SURVEY CORNER CERTIFICATE

OF

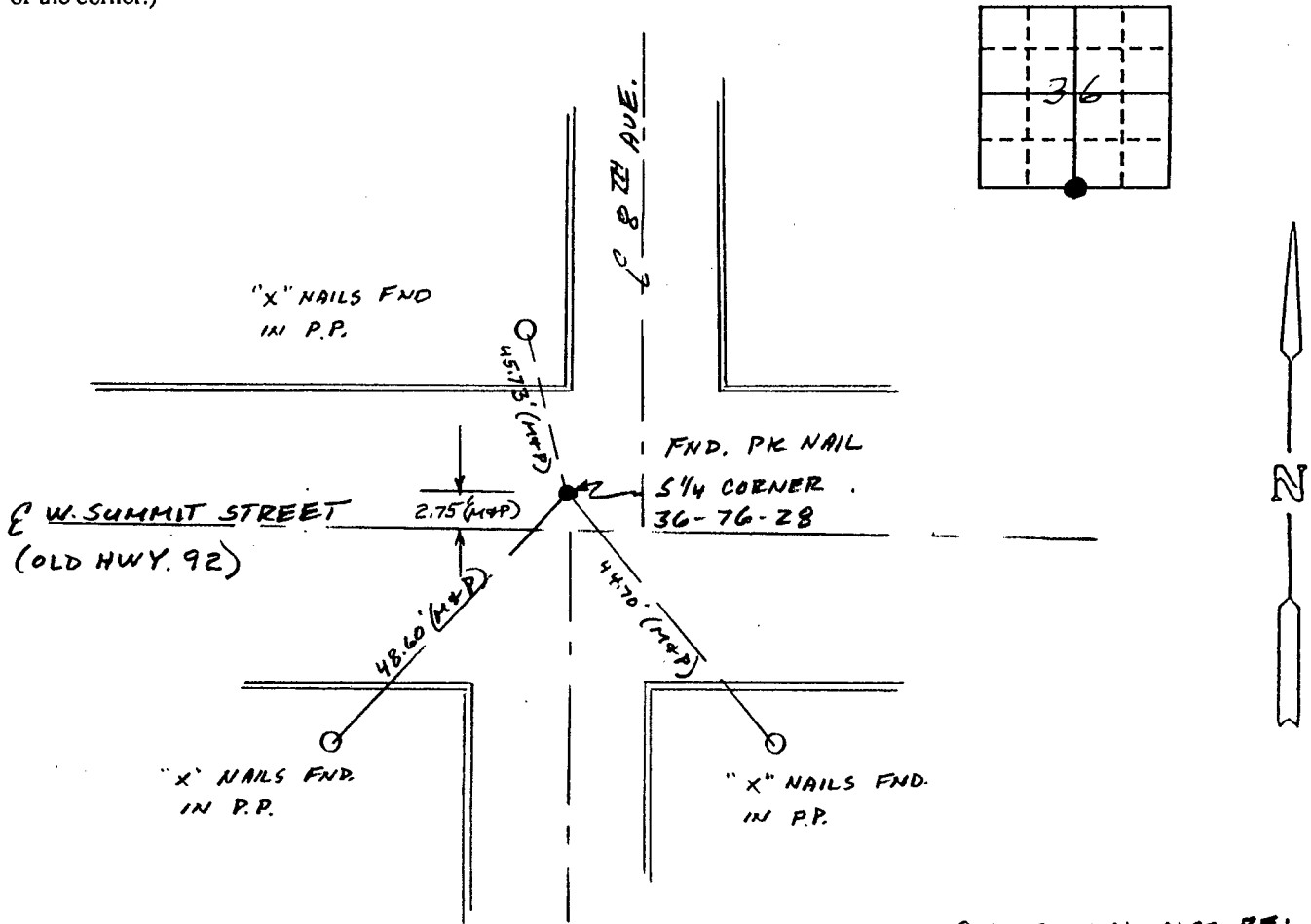
Land Survey Monuments situated in Section 36, Township 76 North, Range 28 West, of the Fifth Principal Meridian, Madison County, Iowa.  
Previously recorded in Does Not Apply in County Recorder's Office.  
(book, page, document number, etc.)

(Show reason for preparing this certificate, the evidence and detailed procedures used in establishing the corner positions and monumentation found or placed.)

Monument Description and Remarks: No current corner certificates. PK nail found from ties from Vance & Hochstetler Consulting Engineers. The PK nail was accepted.

PLAN - VIEW

(Show a minimum of three reference ties to durable physical objects, relevant monuments and physical conditions that will enable recovery of the corner.)



CORNER MAY ALSO BE:

N 1/4 COR 1-75-28

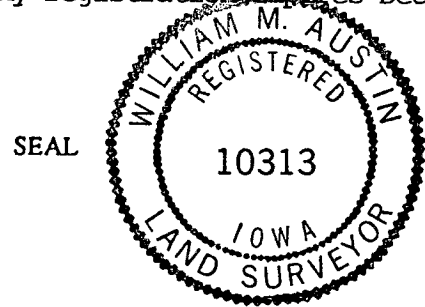
(M) = Measured dimension (P) = Record dimension

I hereby certify that the survey work was completed and this certificate was prepared by me or under my direct personal supervision and that I am a duly registered land surveyor under the laws of the state of Iowa.

Signature: William M. Austin  
Name typed or printed: William M. Austin

Date: 10-5-93 Reg. No. 10313

My registration expires December 31, 19 93.



Corners	List Corners to be Indexed Section	Twp	Range
S 1/4	36	76N	28W

COMPUTER ☒  
RECORDED ☒  
COMPARED ☒

FILED NO. 900  
BOOK 1 PAGE 183  
93 OCT -6 PM 4:12  
MICHELLE UTSLER  
RECORDER  
MADISON COUNTY, IOWA