

UNITED STATES PUBLIC LAND SURVEY CORNER CERTIFICATE

OF

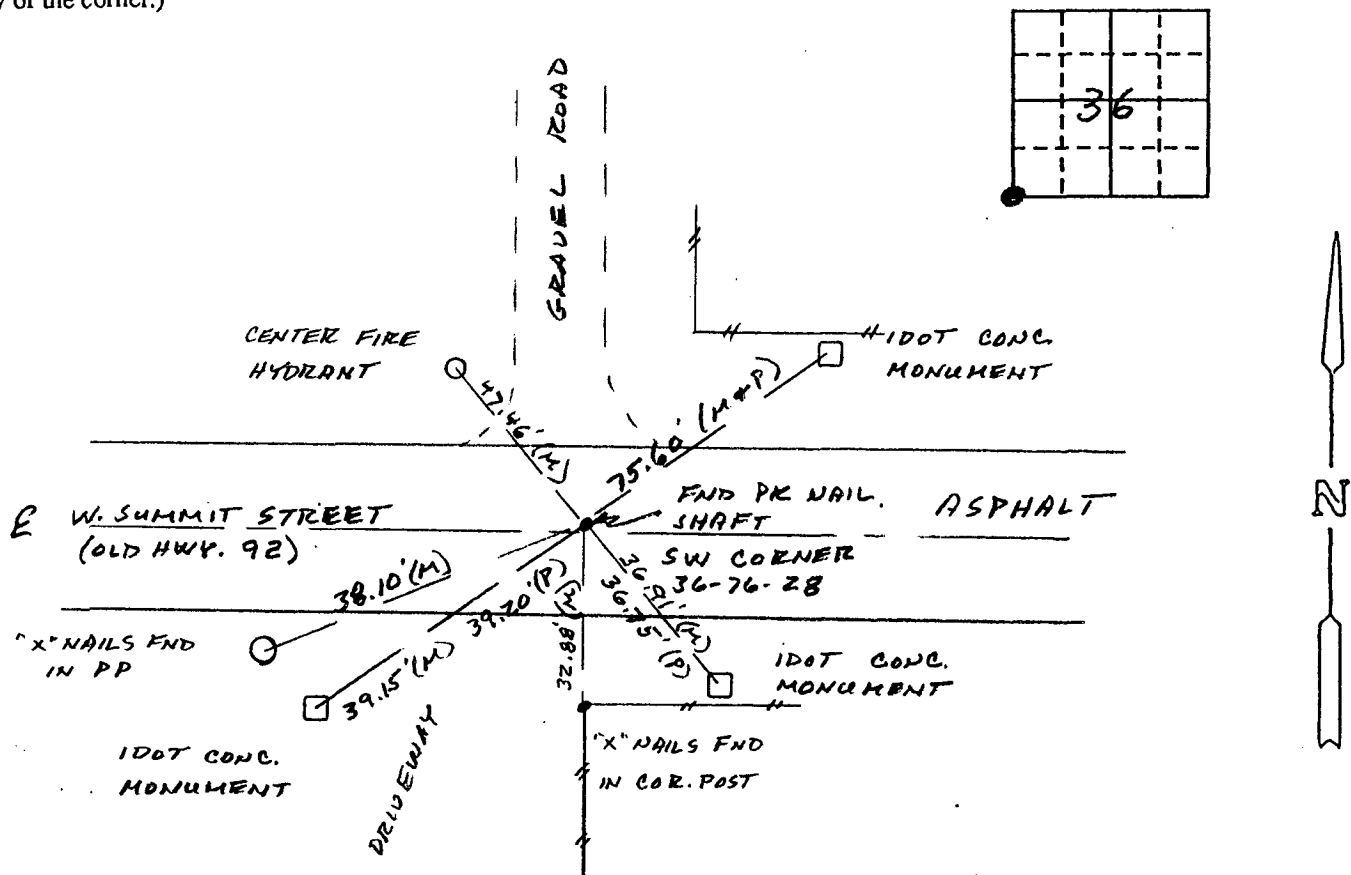
Land Survey Monuments situated in Section 36, Township 76 North, Range 28 West, of the Fifth Principal Meridian, Madison County, Iowa. Previously recorded in Does Not Apply in County Recorder's Office.

(Show reason for preparing this certificate, the evidence and detailed procedures used in establishing the corner positions and monumentation found or placed.)

Monument Description and Remarks: No current corner certificate. The shaft of a PK nail was found from ties made in 1988 by Anderson Consultants, Inc. The nail was accepted.

PLAN - VIEW

(Show a minimum of three reference ties to durable physical objects, relevant monuments and physical conditions that will enable recovery of the corner.)



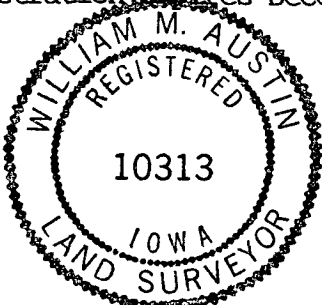
CORNER MAY ALSO BE:
SE COR 35-76-28
NE COR 2-75-28
NW COR 1-75-28

(M) = Measured dimension (P) = Record dimension

I hereby certify that the survey work was completed and this certificate was prepared by me or under my direct personal supervision and that I am a duly registered land surveyor under the laws of the state of Iowa.

Signature: William M. Austin
Name typed or printed: William M. Austin
Date: 10-5-93 Reg. No. 10313

My registration expires December 31, 1993.



SEAL

Corners	Section	Twp	Range
SW	36	76N	28W

COMPUTER
RECORDED
COMPARED

FILED NO. 899

BOOK 1 PAGE 182

93 OCT -6 PM 4:11

MICHELLE UTSLER
RECORDER
MADISON COUNTY, IOWA

Fee \$6.00