

UNITED STATES PUBLIC LAND SURVEY CORNER CERTIFICATE

OF

Land Survey Monuments situated in Section 20, Township 76N, Range 27W, of the Fifth Principal Meridian, MADISON County, Iowa.
 Previously recorded in _____ in County Recorder's Office.

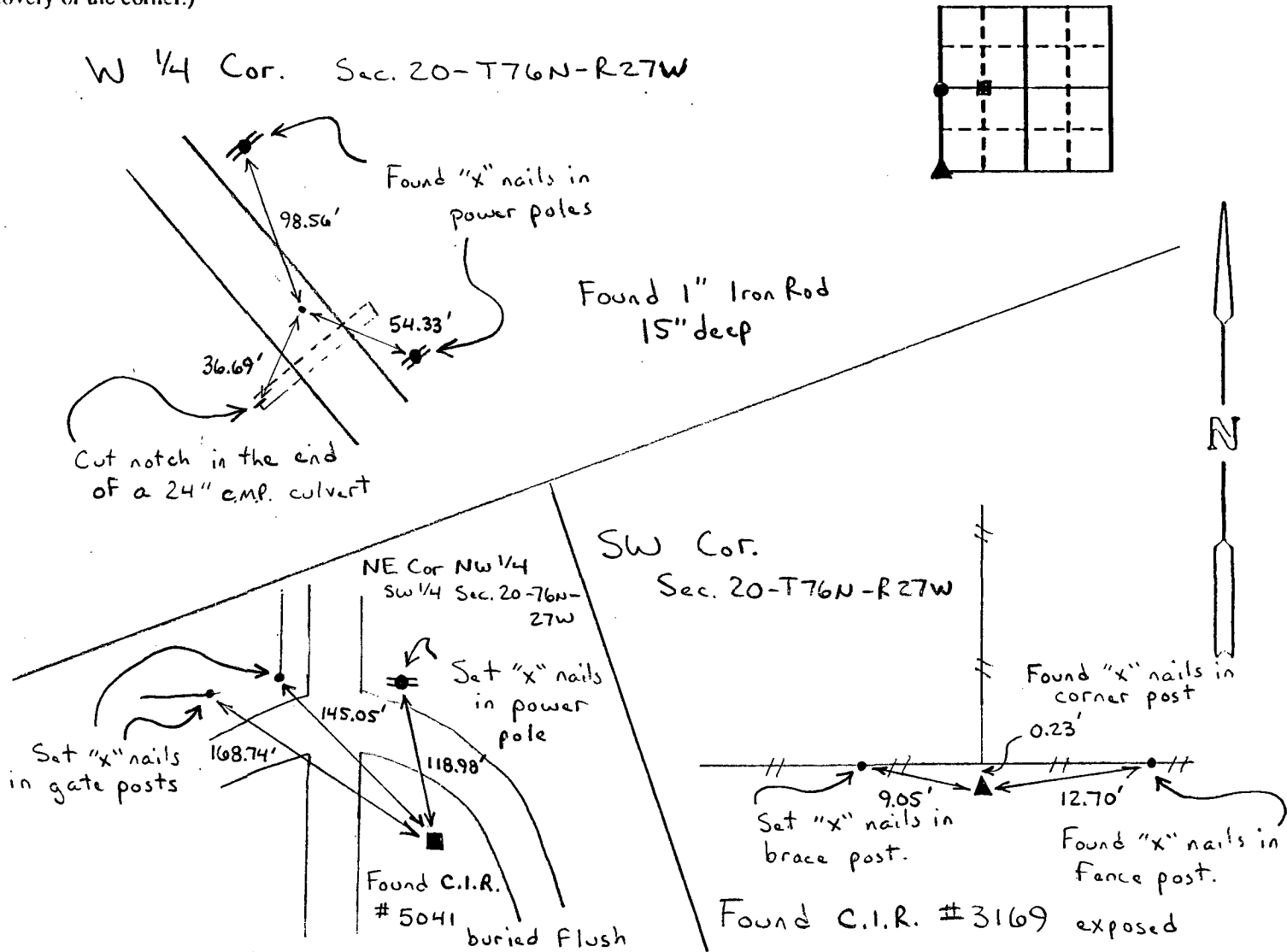
(book, page, document number, etc.)

(Show reason for preparing this certificate, the evidence and detailed procedures used in establishing the corner positions and monumentation found or placed.)

Monument Description and Remarks: _____

PLAN - VIEW

(Show a minimum of three reference ties to durable physical objects, relevant monuments and physical conditions that will enable recovery of the corner.)



I hereby certify that the survey work was completed and this certificate was prepared by me or under my direct personal supervision and that I am a duly registered land surveyor under the laws of the state of Iowa.

Signature: James M Hochstetler
 Name typed or printed: James M Hochstetler, PE & LS
 Date: 9/3/93 Reg. No. 6808



SEAL

List Corners to be Indexed			
Corners	Section	Twp	Range
W 1/4 Cor.	20	76N	27W
SW Cor.	20	76N	27W
NE Cor			
NW 1/4, SW 1/4	20	76N	27W

FILED NO. 724

COMPUTER
 RECORDED
 COMPARED

BOOK 1 PAGE 181

93 SEP 17 PM 3:45

REC \$ 6.00
 AUD \$ _____

MICHELLE UTSLER
 RECORDER
 MADISON COUNTY, IOWA