

UNITED STATES PUBLIC LAND SURVEY CORNER CERTIFICATE

OF

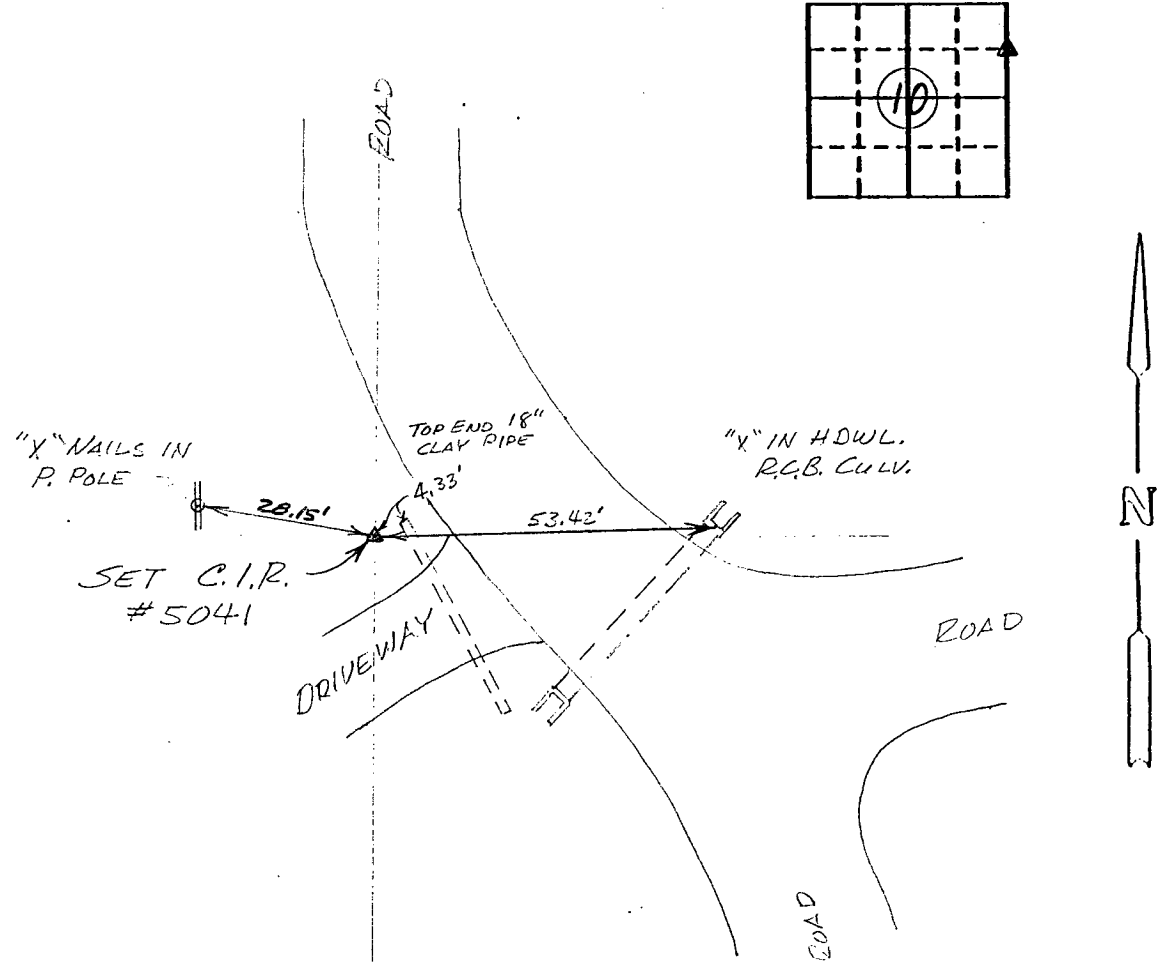
Land Survey Monuments situated in Section 10, Township 76 North, Range 28 West, of the Fifth Principal Meridian, Madison County, Iowa. Previously recorded in N/A in County Recorder's Office.

(book, page, document number, etc.)
(Show reason for preparing this certificate, the evidence and detailed procedures used in establishing the corner positions and monumentation found or placed.)

Monument Description and Remarks: Set capped iron rod at the mid-point between the NE. Cor. and the E. 1/4 Cor. of Sec. 10-76-28

PLAN - VIEW

(Show a minimum of three reference ties to durable physical objects, relevant monuments and physical conditions that will enable recovery of the corner.)



Ref. to NE. Cor., SE 1/4 NE 1/4, SECTION 10, T76N, R28W

I hereby certify that the survey work was completed and this certificate was prepared by me or under my direct personal supervision and that I am a duly registered land surveyor under the laws of the state of Iowa.

Signature: Charles T. Vance
Name typed or printed: Charles T. Vance, PE & LS
Date: 25 August 1993 Reg. No. 5041



Comers	Section	Twp	Range
NE. COR.	10	76	28
SE 1/4 NE 1/4			

FILED NO. 515
 COMPUTER
 RECORDED
 COMPARED
 BOOK 1 PAGE 180
 93 AUG 26 PM 2:18
 MICHELLE UTSLER
 RECORDER
 MADISON COUNTY, IOWA
 Fee \$6.00