

# UNITED STATES PUBLIC LAND SURVEY CORNER CERTIFICATE

OF

Land Survey Monuments situated in Section 1, Township 74 North, Range 28 West, of the Fifth Principal Meridian, Madison County, Iowa.  
Previously recorded in N/A in County Recorder's Office.

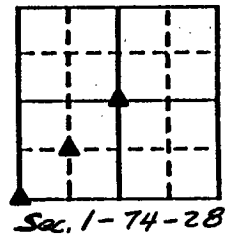
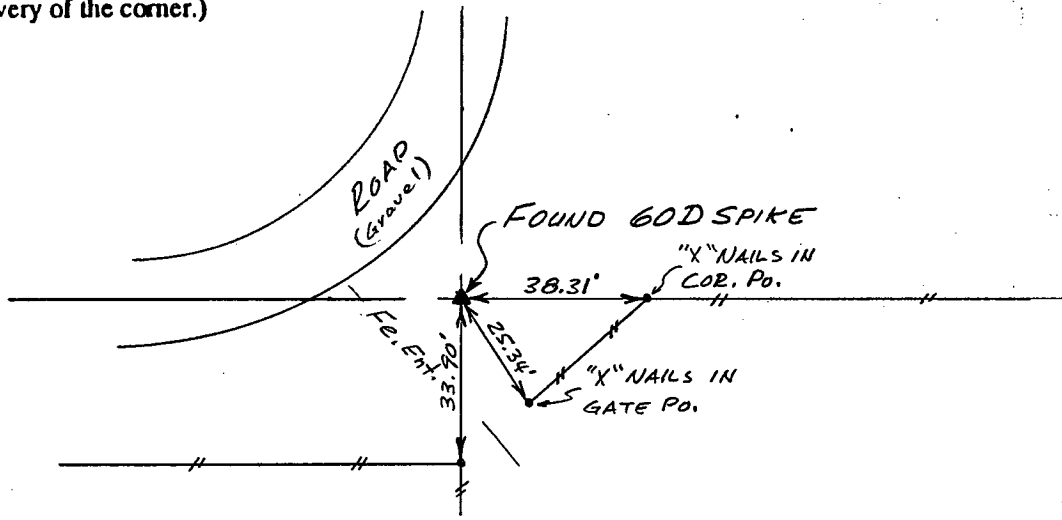
(book, page, document number, etc.)

(Show reason for preparing this certificate, the evidence and detailed procedures used in establishing the corner positions and monumentation found or placed.)

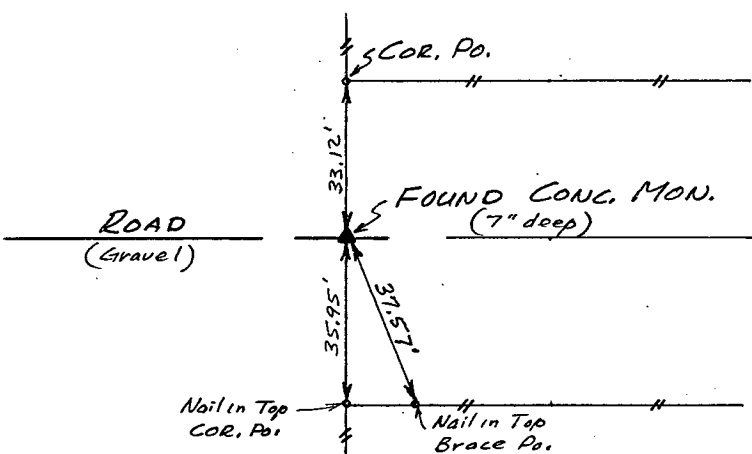
Monument Description and Remarks: Monuments Found and set as shown below.

## PLAN - VIEW

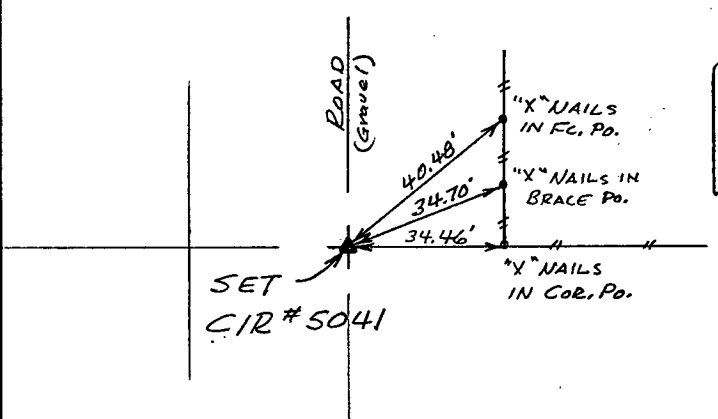
(Show a minimum of three reference ties to durable physical objects, relevant monuments and physical conditions that will enable recovery of the corner.)



Ref. to CENTER OF SECTION 1, T74N, R28W.



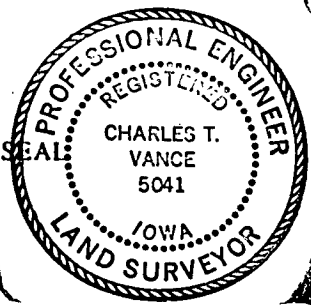
Ref. to SW. CORNER SECTION 1, T74N, R28W.



Ref. to NW. COR., SE. 1/4 SW. 1/4, SECTION 1, T74N, R28W

I hereby certify that the survey work was completed and this certificate was prepared by me or under my direct personal supervision and that I am a duly registered land surveyor under the laws of the state of Iowa.

Signature: Charles T. Vance  
Name typed or printed: Charles T. Vance, PE & LS  
Date: 15 DEC, 1993 Reg. No. 5041



FILED NO. 1559

BOOK 1 PAGE 191

93 DEC 16 PM 4:01

MICHELLE UTSLER  
RECORDER  
MADISON COUNTY, IOWA

Corners	List Corners to be Indexed	Section	Twp	Range
CENTER		1	74	28
SW. COR.		1	74	28
NW. COR.		1	74	28
SE. 1/4 SW. 1/4		1	74	28

REC \$ 5.00  
AUD \$ \_\_\_\_\_  
R.M.F. \$ 1.00

COMPUTER   
RECORDED   
COMPARED