

UNITED STATES PUBLIC LAND SURVEY CORNER CERTIFICATE

OF

Land Survey Monuments situated in Section 3 and 4, Township 77 North, Range 29 West, of the Fifth Principal Meridian, Madison County, Iowa.
 Previously recorded in N/A in County Recorder's Office.

(book, page, document number, etc.)

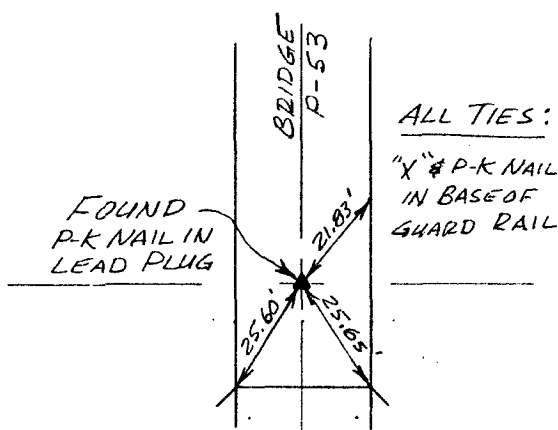
(Show reason for preparing this certificate, the evidence and detailed procedures used in establishing the corner positions and monumentation found or placed.)

Monument Description and Remarks: Found N. 1/4 Cor. Sec. 4 and W. 1/4 Cor. Sec 3.

Set NW. Cor. Sec 3 and NE. Cor. NW 1/4 NW 1/4, Sec 3 in line with found corners, existing road centerlines, and existing fence lines.

PLAN - VIEW

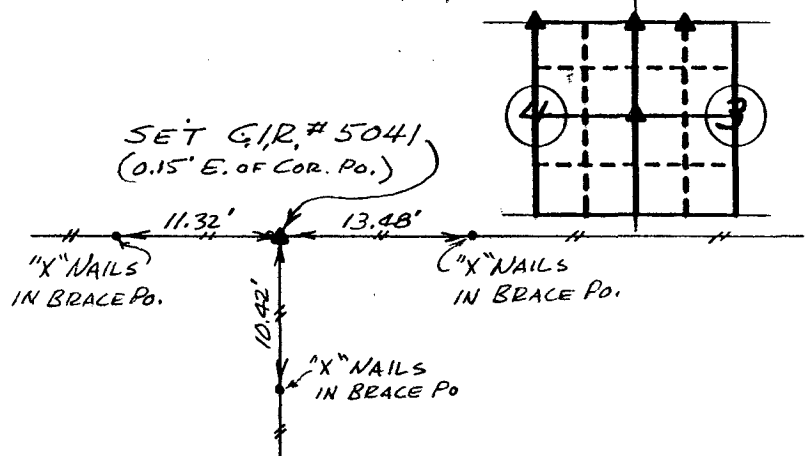
(Show a minimum of three reference ties to durable physical objects, relevant monuments and physical conditions that will enable recovery of the corner.)



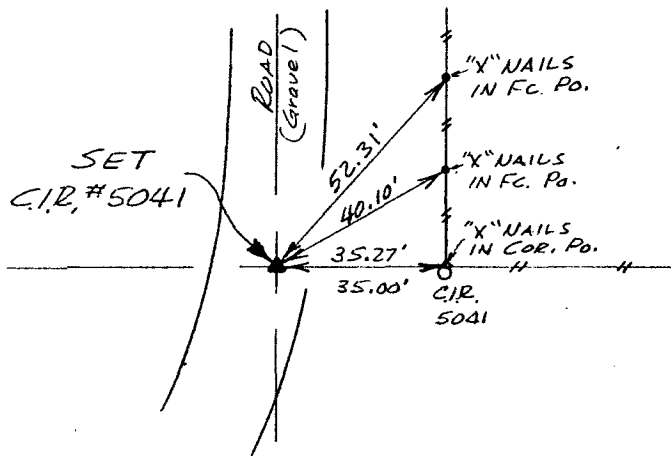
ALL TIES:

"X" # P-K NAIL IN BASE OF GUARD RAIL

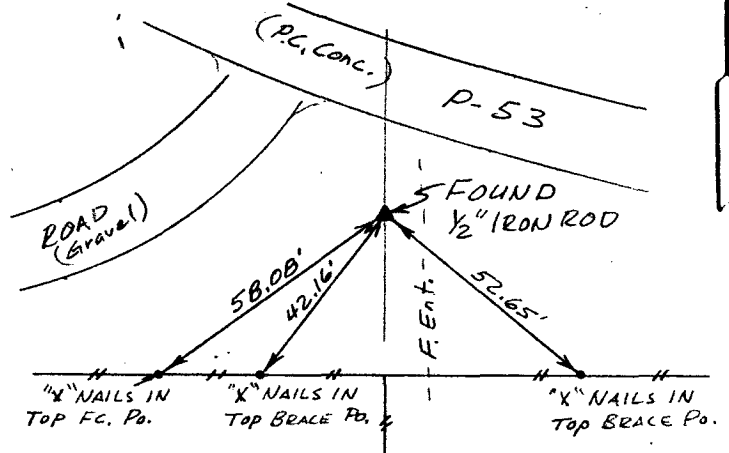
Ref. to W. 1/4 Cor. SECTION 3, T77N, R29W.



Ref. to NE. Cor., NW 1/4 NW 1/4, SECTION 3, T77N, R29W.



Ref. to NW. Cor., SECTION 3, T77N, R29W.



Ref. to N. 1/4 Cor., SECTION 4, T77N, R29W

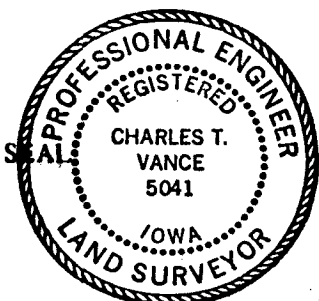
I hereby certify that the survey work was completed and this certificate was prepared by me or under my direct personal supervision and that I am a duly registered land surveyor under the laws of the state of Iowa.

Signature: Charles T. Vance
 Name typed or printed: Charles T. Vance, PE & LS

Date: 12 May 1993 Reg. No. 5041

List Corners to be Indexed

Corners	Section	Twp	Range
W. 1/4 Cor.	3	77	29
NE. Cor.	3	77	29
NW 1/4 NW 1/4	3	77	29
NW. Cor.	3	77	29
N. 1/4 Cor.	4	77	29



FILED NO. 2968
 BOOK 1 PAGE 171
 93 MAY 25 PM 3:55
 MICHELLE UTSLER
 RECORDER
 MADISON COUNTY, IOWA
 Fee \$5.00

COMPUTER
 RECORDED
 COMPARED