

UNITED STATES PUBLIC LAND SURVEY CORNER CERTIFICATE

OF

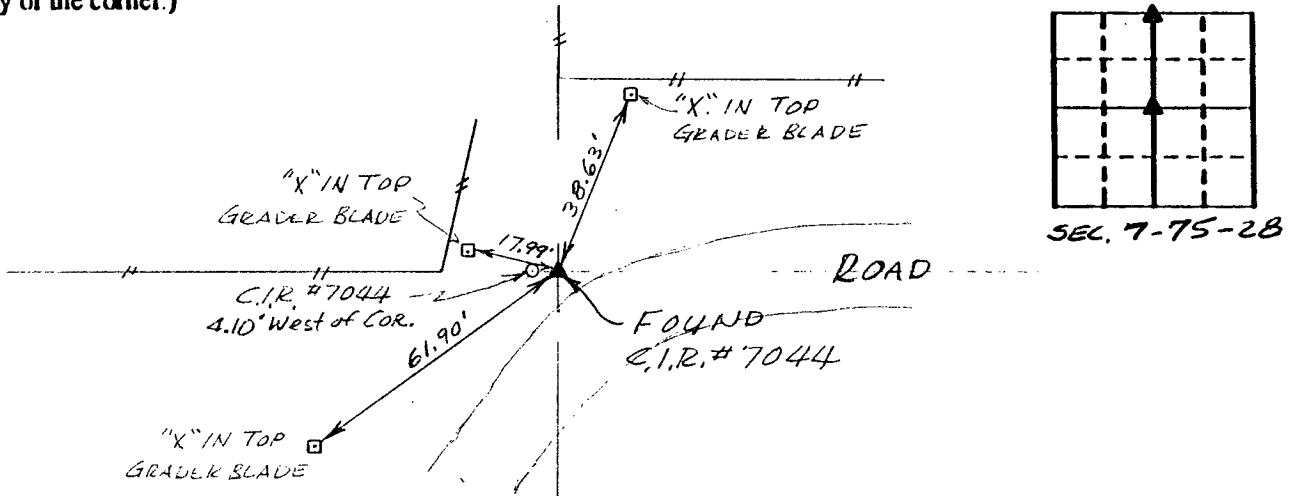
Land Survey Monuments situated in Section 7, Township 75 North, Range 28 West, of the Fifth Principal Meridian, Madison County, Iowa.
Previously recorded in N/A in County Recorder's Office.
(book, page, document number, etc.)

(Show reason for preparing this certificate, the evidence and detailed procedures used in establishing the corner positions and monumentation found or placed.)

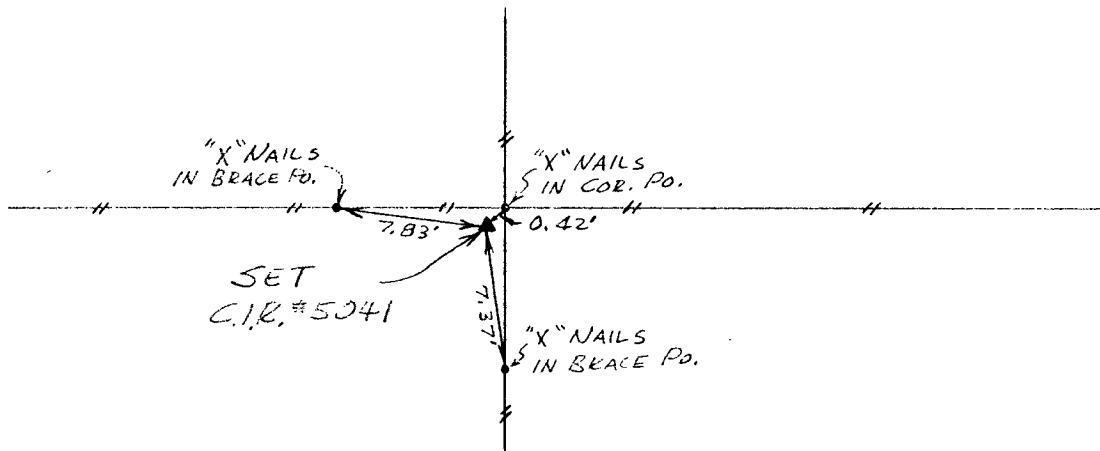
Monument Description and Remarks: Set Center of Section in line with N-S Fence and E-W Fence.

PLAN - VIEW

(Show a minimum of three reference ties to durable physical objects, relevant monuments and physical conditions that will enable recovery of the corner.)



Ref. to N. 1/4 COR., SECTION 7, T75N, R28W.



Ref. to CENTER, SECTION 7, T75N, R28W.

I hereby certify that the survey work was completed and this certificate was prepared by me or under my direct personal supervision and that I am a duly registered land surveyor under the laws of the state of Iowa.

Signature: Charles T. Vance
Name typed or printed: Charles T. Vance, PE & LS
Date: 6 May 1993 Reg. No. 5041

Corners	List Corners to be Indexed		
	Section	Twp	Range
N. 1/4 COR.	7	75	28
CENTER	7	75	28



COMPUTER
RECORDED
COMPARED

Fee \$5.00

FILED NO. 2966

BOOK 1 PAGE 169

93 MAY 25 PM 3: 53

MICHELLE-UTSLER
RECORDER
MADISON COUNTY, IOWA