

UNITED STATES PUBLIC LAND SURVEY CORNER CERTIFICATE

OF

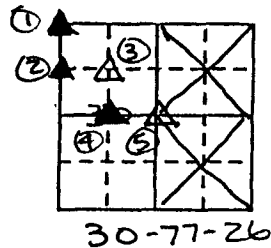
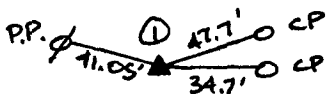
Land Survey Monuments situated in Section 30, Township 77 NORTH, Range 26 WEST, of the Fifth Principal Meridian, MADISON County, Iowa.
 Previously recorded in Book -, Page -.

(Show reason for preparing this certificate, the evidence and detailed procedures used in establishing the corner positions and monumentation found or placed.)

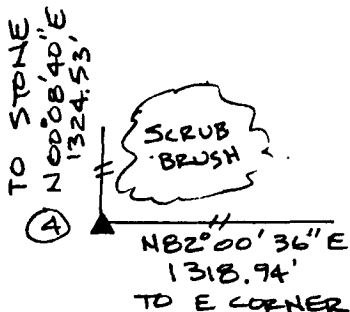
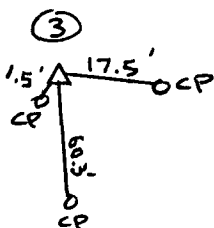
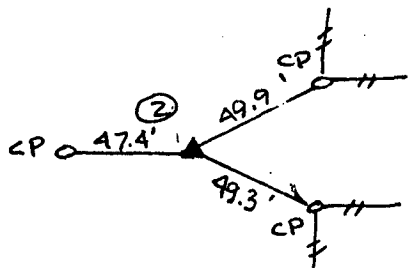
Monument Description and Remarks: ① NW COR SEC 30-77-26, SET IRON PIN
② NW COR QL 2 SEC 30-77-26, SET IRON PIN ③ NE COR
QL 2 SEC 30-77-26, FOUND STONE ④ SE COR QL 2
SEC 30-77-26, SET IRON PIN @ CORNER POST ⑤ EAST CORNER
SEC 30-77-26, FOUND 5/8" IRON PIN PER COUNTY TIES

PLAN - VIEW

(Show a minimum of three reference ties to durable physical objects, relevant monuments and physical conditions that will enable recovery of the corner.)



FILED NO. 2842
 BOOK 1 PAGE 167
 93 MAY 12 PM 4:07
 MICHELLE UTSLER
 RECORDER
 MADISON COUNTY, IOWA
 Fee \$5.00

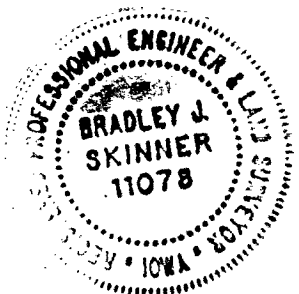


x
 14.37'
 x 12.51' Δ 1895x
 5.24'
 x
 ALL TIES TO "X"
 IN GRADER BLADES

I hereby certify that the survey work was completed and this certificate was prepared by me or under my direct personal supervision and that I am a duly registered land surveyor under the laws of the state of Iowa.

5/5/93
 REGISTERED LAND SURVEYOR NO. 11078

SEAL



List Corners to be Indexed

Corners	Section	Twp	Range
NW	30	77	26
NW QL 2	30	77	26
NE QL 2	30	77	26
SE QL 2	30	77	26
E	30	77	26

COMPUTER
 RECORDED
 COMPARED