

# UNITED STATES PUBLIC LAND SURVEY CORNER CERTIFICATE

OF

Land Survey Monuments situated in Section 24, Township 75N, Range 28W, of the Fifth Principal Meridian, Madison County, Iowa. Previously recorded in N.A. in County Recorder's Office.

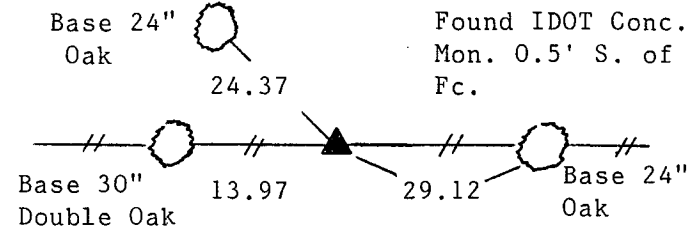
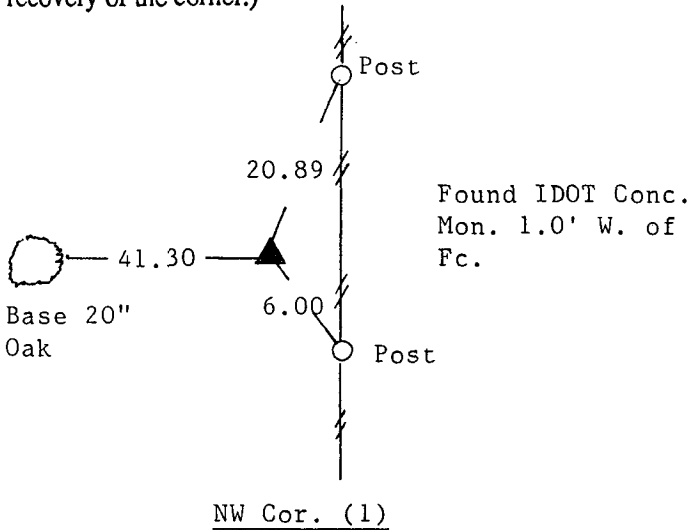
(book, page, document number, etc.)

(Show reason for preparing this certificate, the evidence and detailed procedures used in establishing the corner positions and monumentation found or placed.)

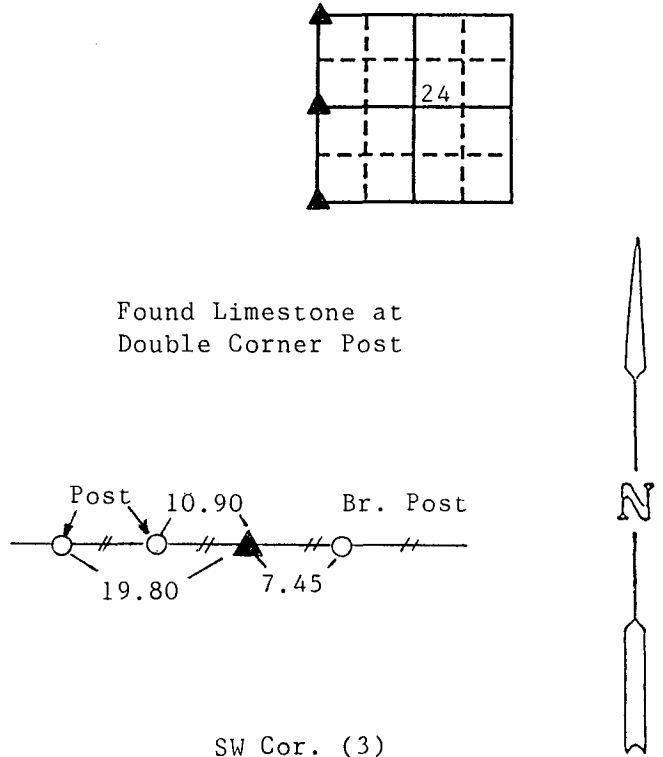
Monument Description and Remarks: (1) (2) and (3). Found monuments as stated below  
previously logged in County Engineer's office tie record.

## PLAN - VIEW

(Show a minimum of three reference ties to durable physical objects, relevant monuments and physical conditions that will enable recovery of the corner.)



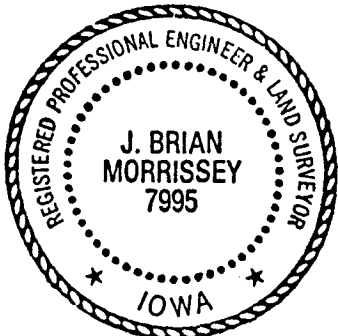
Note: These ties are slope chained



Note: All ties to "X" nails

I hereby certify that the survey work was completed and this certificate was prepared by me or under my direct personal supervision and that I am a duly registered land surveyor under the laws of the state of Iowa.

Signature: J. Brian Morrissey  
 Name typed or printed: J. Brian Morrissey  
 Date: May 5, 1993 Reg. No. 7995



Corners	List Corners to be Indexed Section	Twp	Range
NW	24	75N	28W
SW NW $\frac{1}{4}$	24	75N	28W
SW	24	75N	28W

FILED NO. 2753

Fee \$5.00 BOOK 1 PAGE 163

93 MAY -6 PM 2: 37

COMPUTER   
 RECORDED   
 COMPARED

MICHELLE UTSLER  
 RECORDER  
 MADISON COUNTY, IOWA

SEAL