

UNITED STATES PUBLIC LAND SURVEY CORNER CERTIFICATE

OF

Land Survey Monuments situated in Section 5, Township 77N, Range 28W, of the Fifth Principal Meridian, Madison County, Iowa. Previously recorded in NA in County Recorder's Office.

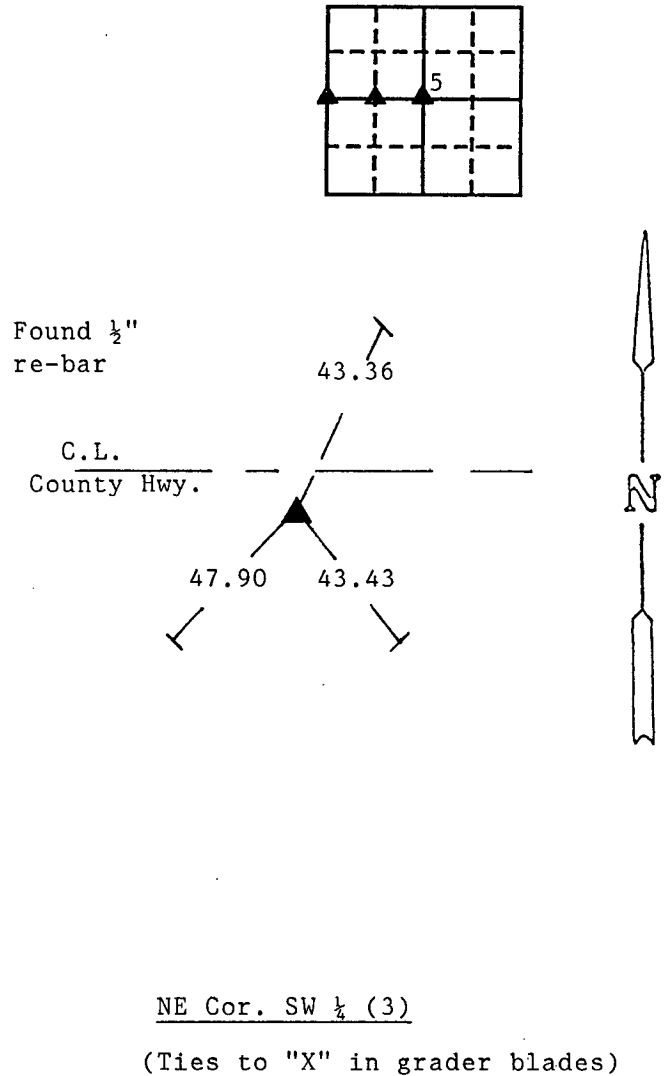
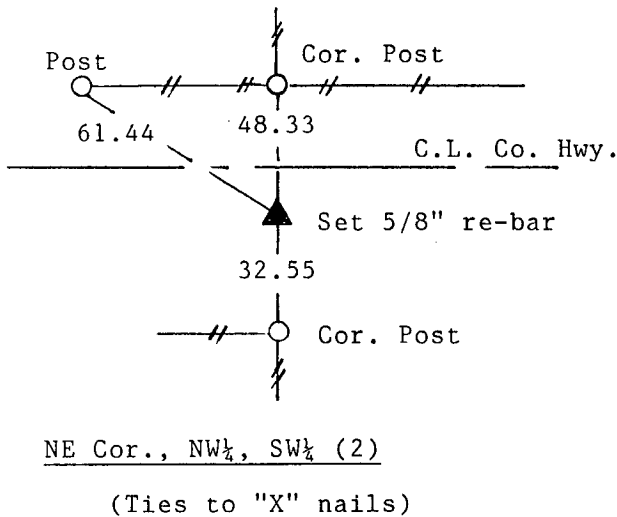
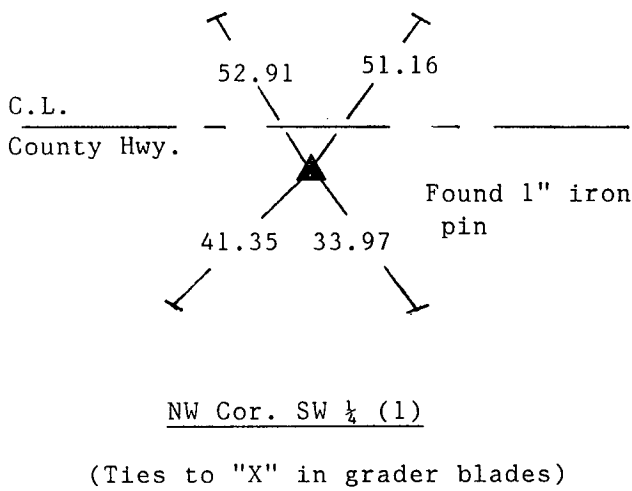
(book, page, document number, etc.)

(Show reason for preparing this certificate, the evidence and detailed procedures used in establishing the corner positions and monumentation found or placed.)

Monument Description and Remarks: (1) Found 1" iron pin previously logged in County Engineer's office tie record. (2) Set 5/8" re-bar at mid point of (1) and (3). (3) Found 1/2" re-bar previously logged in County Engineer's office tie record.

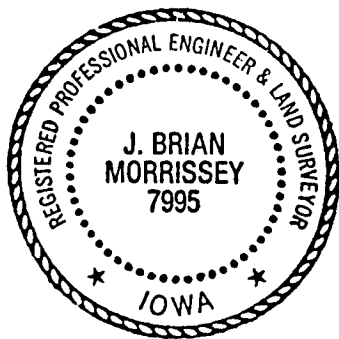
PLAN - VIEW

(Show a minimum of three reference ties to durable physical objects, relevant monuments and physical conditions that will enable recovery of the corner.)



I hereby certify that the survey work was completed and this certificate was prepared by me or under my direct personal supervision and that I am a duly registered land surveyor under the laws of the state of Iowa.

Signature: J. Brian Morrissey
 Name typed or printed: J. Brian Morrissey
 Date: 4/30/93 Reg. No. 7995



SEAL

Corners	List Corners to be Indexed Section	Twp	Range
NW SW 1/4	5	77	28
NE NW 1/4 SW 1/4	5	77	28
NE SW 1/4	5	77	28

COMPUTER
 RECORDED
 COMPARED

See #500

FILED NO. **2690**

BOOK 1 PAGE 162

93 APR 30 PM 1:34

MICHELLE UTSLER
 RECORDER
 MADISON COUNTY, IOWA