

UNITED STATES PUBLIC LAND SURVEY CORNER CERTIFICATE

OF

Land Survey Monuments situated in Section 23, Township 75 North, Range 26 West, of the Fifth Principal Meridian, Madison County, Iowa.
 Previously recorded in N/A in County Recorder's Office.

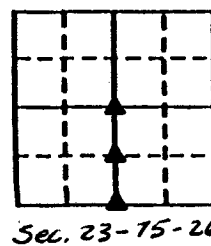
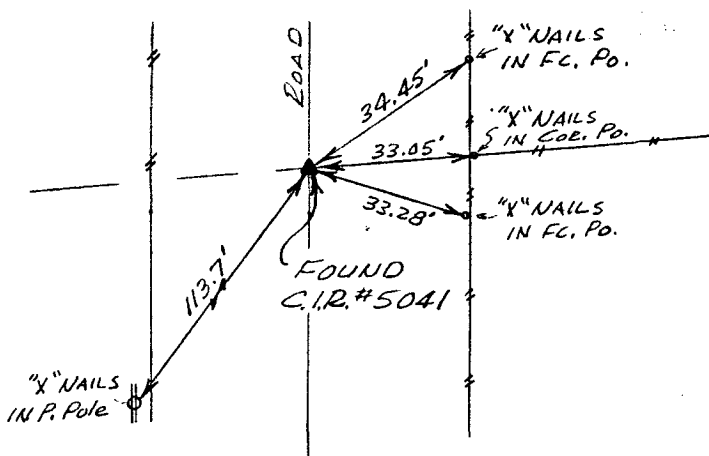
(book, page, document number, etc.)

(Show reason for preparing this certificate, the evidence and detailed procedures used in establishing the corner positions and monumentation found or placed.)

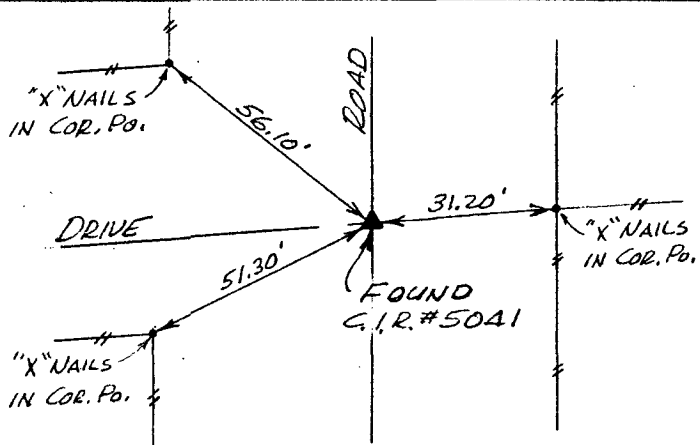
Monument Description and Remarks: Found C.I.R. #5041 at all three land corners.

PLAN - VIEW

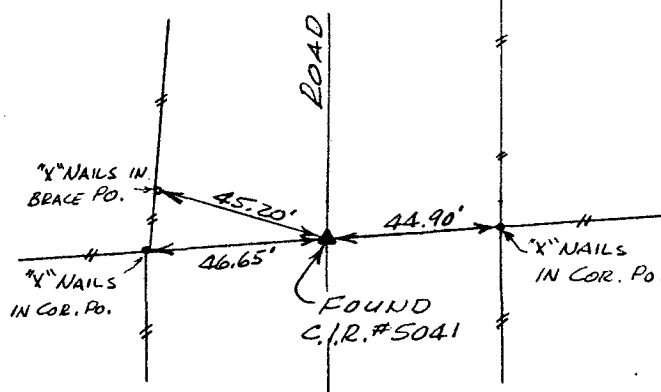
(Show a minimum of three reference ties to durable physical objects, relevant monuments and physical conditions that will enable recovery of the corner.)



Ref. to CENTER OF SECTION 23, T75N, R26W.



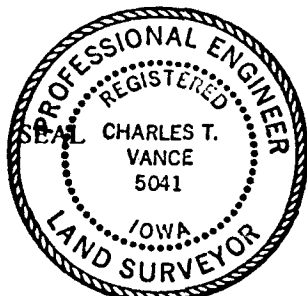
Ref. to NE. Cor., SE. 1/4 - SW. 1/4 SECTION 23, T75N, R26W.



Ref. to S. 1/4 COR. SECTION 23, T75N, R26W.

I hereby certify that the survey work was completed and this certificate was prepared by me or under my direct personal supervision and that I am a duly registered land surveyor under the laws of the state of Iowa.

Signature: Charles T. Vance
 Name typed or printed: Charles T. Vance, PE & LS
 Date: 1 April 1993 Reg. No. 5041



COMPUTER
 RECORDED
 COMPARED

Corners	List Corners to be Indexed	Section	Twp	Range
CENTER		23	75	26
NE. COR.		23	75	26
SE. 1/4 SW. 1/4		23	75	26
S. 1/4 COR.		23	75	26

FILED NO. 2661
 BOOK 1 PAGE 160
 93 APR 28 AM 9:17
 MICHELLE UTSLER
 RECORDER
 MADISON COUNTY, IOWA

Fee \$5.00