

UNITED STATES PUBLIC LAND SURVEY CORNER CERTIFICATE

OF

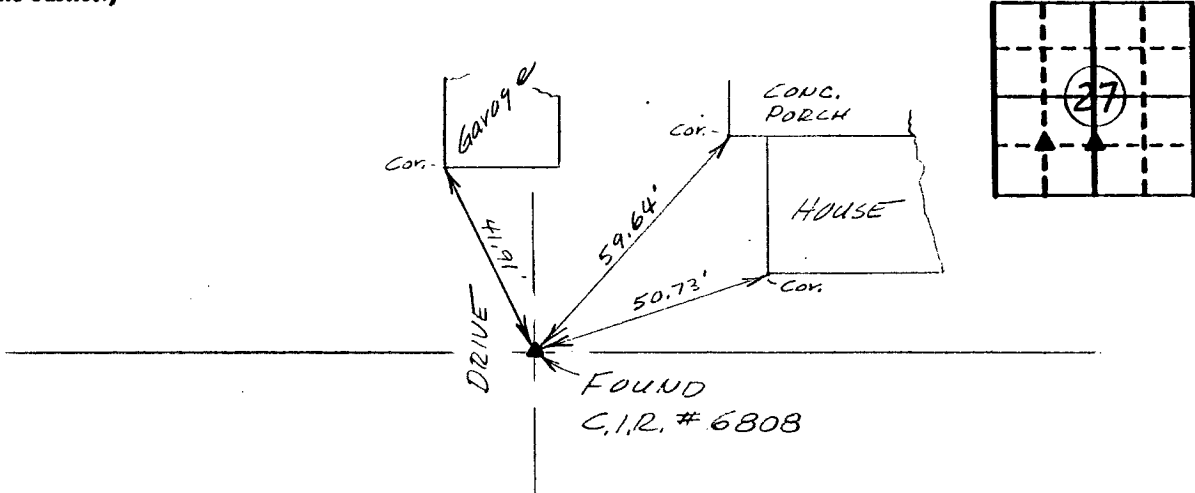
Land Survey Monuments situated in Section 27, Township 77 North, Range 28 West, of the Fifth Principal Meridian, Madison County, Iowa.
 Previously recorded in N/A in County Recorder's Office.
(book, page, document number, etc.)

(Show reason for preparing this certificate, the evidence and detailed procedures used in establishing the corner positions and monumentation found or placed.)

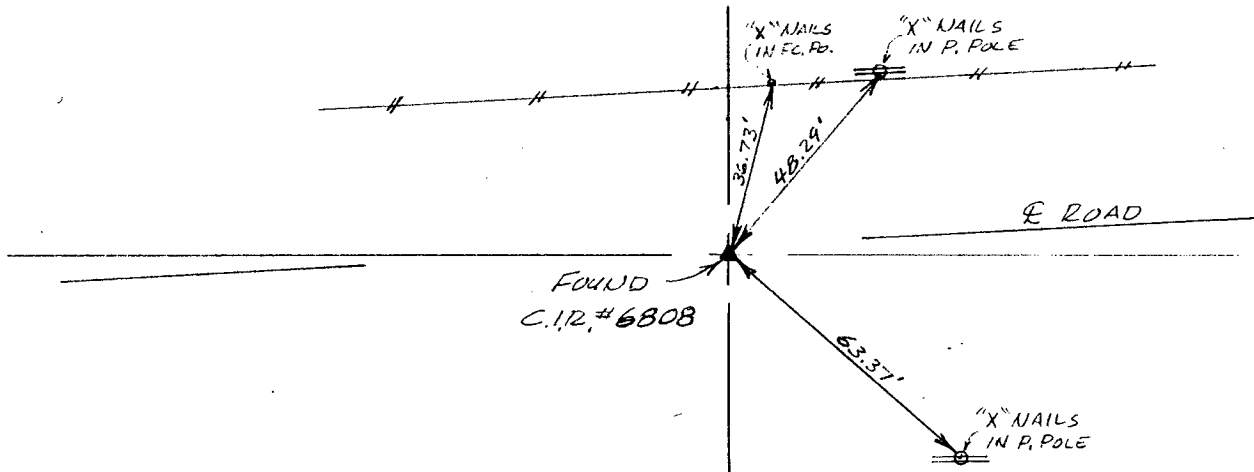
Monument Description and Remarks: Found C.I.R. # 6808 at both corners

PLAN - VIEW

(Show a minimum of three reference ties to durable physical objects, relevant monuments and physical conditions that will enable recovery of the corner.)



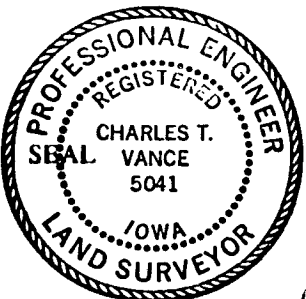
Ref. to SW. COR., NE. 1/4 SW. 1/4, SECTION 27, T77N, R28W.



Ref. to SE. COR., NE. 1/4 SW. 1/4, SECTION 27, T77N, R28W.

I hereby certify that the survey work was completed and this certificate was prepared by me or under my direct personal supervision and that I am a duly registered land surveyor under the laws of the state of Iowa.

Signature: Charles T. Vance
 Name typed or printed: Charles T. Vance, PE & LS
 Date: 9 June 1993 Reg. No. 5041



Corners	List Corners to be Indexed	Section	Twp	Range
SW. COR., NE. 1/4 SW. 1/4		27	77	28
SE. COR., NE. 1/4 SW. 1/4		27	77	28
		BOOK 1	PAGE 176	
		COMPUTER	<input checked="" type="checkbox"/>	
		RECORDED	<input checked="" type="checkbox"/>	
		COMPARED	<input type="checkbox"/>	
		Fee	\$6.00	

131
 RECORDED NO. 7-28
 93 JUL 16 AM 10:24
 MICHELLE UTSLER
 RECORDER
 MADISON COUNTY, IOWA