

UNITED STATES PUBLIC LAND SURVEY CORNER CERTIFICATE

OF

Land Survey Monuments situated in Section 7, Township 76 North, Range 29 West, of the Fifth Principal Meridian, MADISON County, Iowa. Previously recorded in N/A in County Recorder's Office.

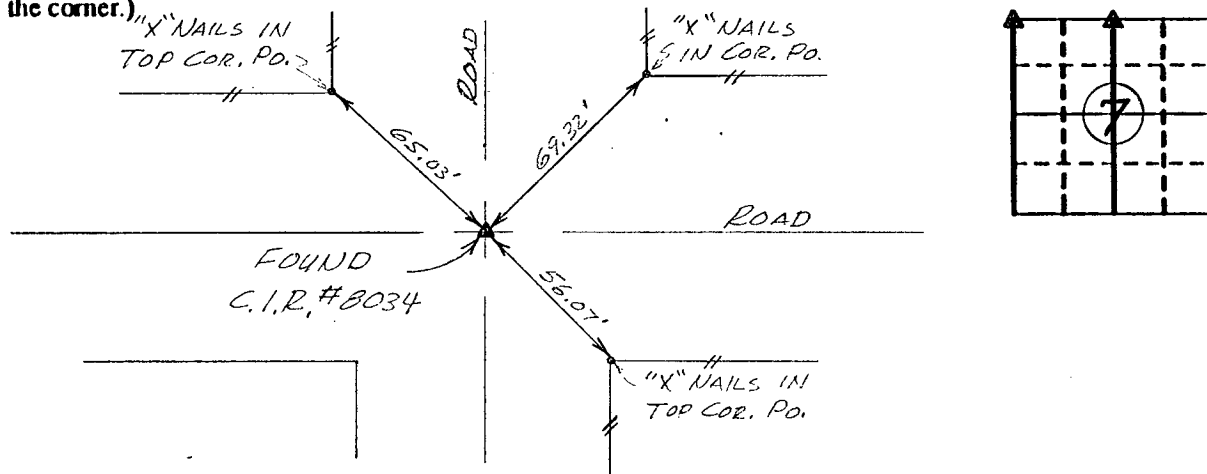
(book, page, document number, etc.)

(Show reason for preparing this certificate, the evidence and detailed procedures used in establishing the corner positions and monumentation found or placed.)

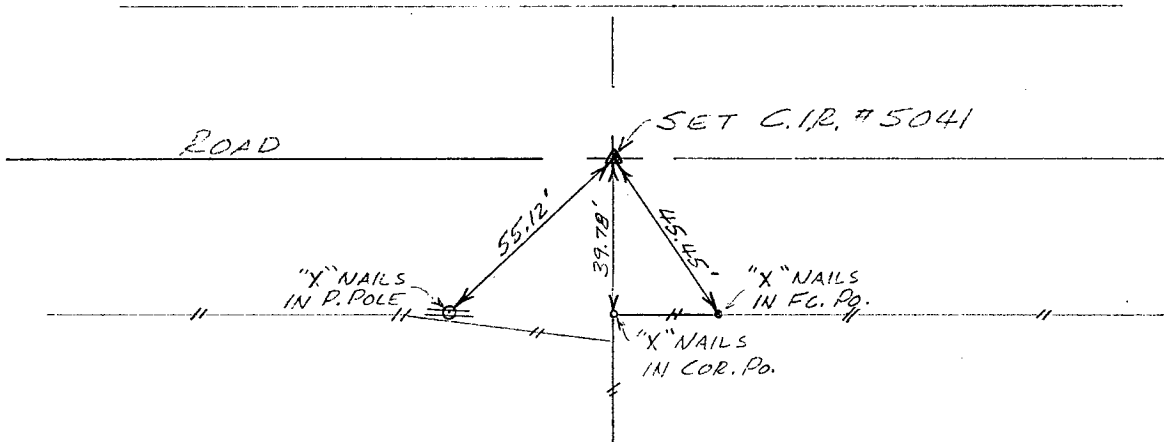
Monument Description and Remarks: N. 1/4 COR. Sec. 7, set C.I.R. #5041 at E of Road and in line with N-S fence

PLAN - VIEW

(Show a minimum of three reference ties to durable physical objects, relevant monuments and physical conditions that will enable recovery of the corner.)



Ref. to NW. COR., SECTION 7, T76N, R29W.



Ref. to N. 1/4 COR., SECTION 7, T76N, R29W.

I hereby certify that the survey work was completed and this certificate was prepared by me or under my direct personal supervision and that I am a duly registered land surveyor under the laws of the state of Iowa.

Signature: Charles T. Vance
 Name typed or printed: Charles T. Vance, PE & LS
 Date: 24 June 1993 Reg. No. 5041



Corners	Section	Twp	Range
NW. COR.	7	76	29
N. 1/4 COR.	7	76	29

COMPUTER FILED NO. 130
 RECORDED
 COMPARED BOOK 1 PAGE 175

Fee \$6.00

93 JUL 16 AM 10:23
 MICHELLE UTSLER
 RECORDER
 MADISON COUNTY, IOWA