

# UNITED STATES PUBLIC LAND SURVEY CORNER CERTIFICATE

OF

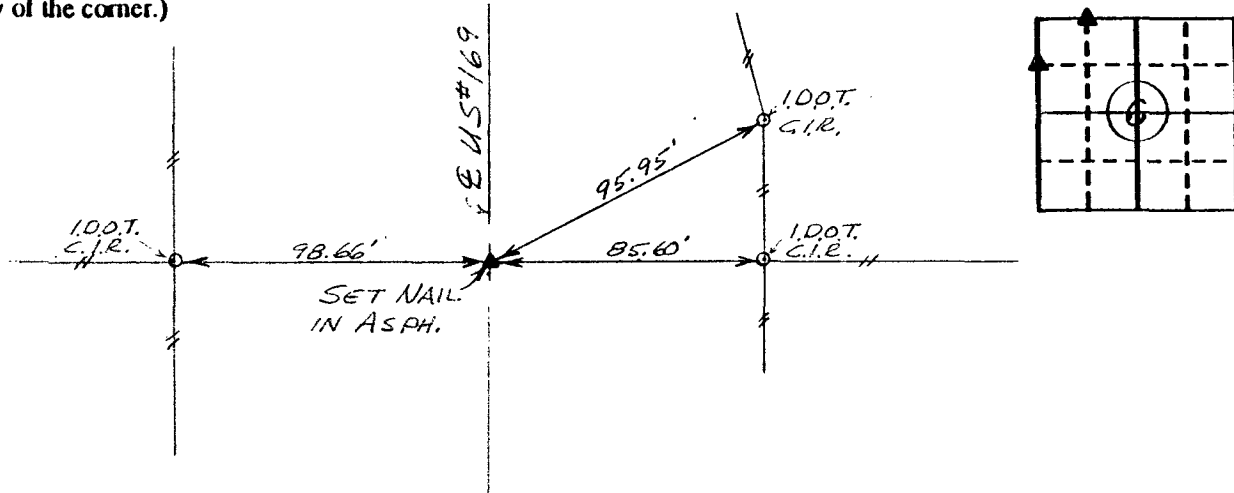
Land Survey Monuments situated in Section 6, Township 76 North, Range 27 West, of the Fifth Principal Meridian, Madison County, Iowa.  
 Previously recorded in N/A in County Recorder's Office.  
(book, page, document number, etc.)

(Show reason for preparing this certificate, the evidence and detailed procedures used in establishing the corner positions and monumentation found or placed.)

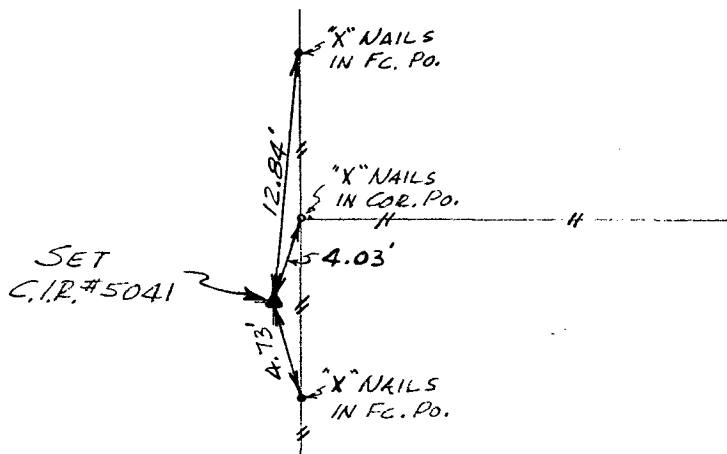
Monument Description and Remarks: \_\_\_\_\_  
 \_\_\_\_\_  
 \_\_\_\_\_  
 \_\_\_\_\_

### PLAN - VIEW

(Show a minimum of three reference ties to durable physical objects, relevant monuments and physical conditions that will enable recovery of the corner.)



Ref. to NW. Cor., SW. 1/4 NW. 1/4, SECTION 6, T 76N, R 27W.



Ref. to NW. Cor., NE. 1/4 NW. 1/4, SECTION 6, T 76N, R 27W.

I hereby certify that the survey work was completed and this certificate was prepared by me or under my direct personal supervision and that I am a duly registered land surveyor under the laws of the state of Iowa.

Signature: Charles T. Vance  
 Name typed or printed: Charles T. Vance, PE & LS  
 Date: 4 Jan. 1993 Reg. No. 5041



COMPARED

Corners	Section	Twp	Range
NW. Cor.	6	76	27
SW. 1/4 NW. 1/4			
NW. Cor.	6	76	27
NE. 1/4 NW. 1/4			
COMPUTER			
Fee \$5.00			
IND. <input checked="" type="checkbox"/>			
REC. <input checked="" type="checkbox"/>			
PAGE <input checked="" type="checkbox"/>			
FILED NO.	1972		
BOOK	1	PAGE	148
	93 FEB - 5 PM 1:24		
	MICHELLE UTSLER RECORDER MADISON COUNTY, IOWA		