

UNITED STATES PUBLIC LAND SURVEY CORNER CERTIFICATE

OF

Land Survey Monuments situated in Section 34, Township 77 North, Range 28 West, of the Fifth Principal Meridian, Madison County, Iowa.
 Previously recorded in N/A in County Recorder's Office.

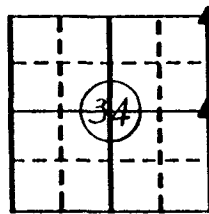
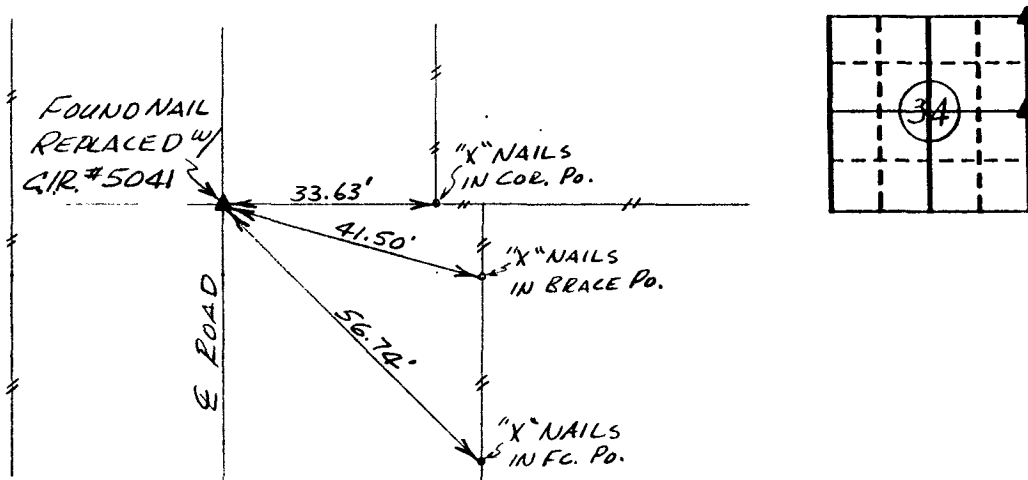
(book, page, document number, etc.)

(Show reason for preparing this certificate, the evidence and detailed procedures used in establishing the corner positions and monumentation found or placed.)

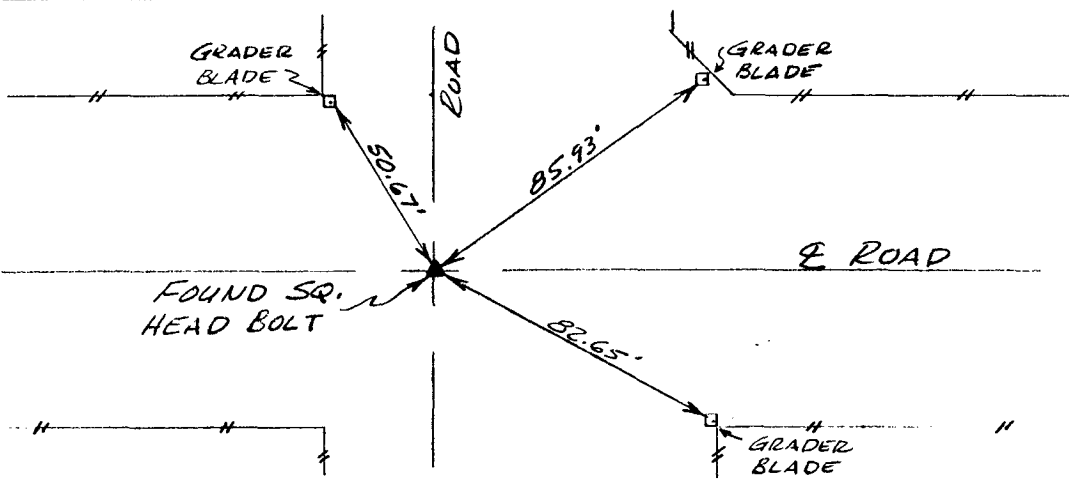
Monument Description and Remarks: _____

PLAN - VIEW

(Show a minimum of three reference ties to durable physical objects, relevant monuments and physical conditions that will enable recovery of the corner.)



Ref. to NE. COR., SECTION 34, T 77N, R 28W.



Ref. to E. 1/4 COR., SECTION 34, T 77N, R 28W.

I hereby certify that the survey work was completed and this certificate was prepared by me or under my direct personal supervision and that I am a duly registered land surveyor under the laws of the state of Iowa.

Signature: Charles T. Vance
 Name typed or printed: Charles T. Vance, PE & LS
 Date: 22 Dec. 1992 Reg. No. 5041

Corners	List Corners to be Indexed	Section	Twp	Range
NE. COR.	34 - 77 - 28			
E. 1/4 COR.	34 - 77 - 28			

FILED NO. 1966

Fee \$5.00 BOOK 1 PAGE 147

93 FEB -5 PM 12: 25

FD.
 REG.
 PAGE

MICHELLE UTSLER
 RECORDER
 MADISON COUNTY, IOWA



COMPUTER
 COMPARED