

UNITED STATES PUBLIC LAND SURVEY CORNER CERTIFICATE

OF

Land Survey Monuments situated in Section 14, Township 77N, Range 27W, of the Fifth Principal Meridian, MADISON County, Iowa.
Previously recorded in Book -, Page -.

(Show reason for preparing this certificate, the evidence and detailed procedures used in establishing the corner positions and monumentation found or placed.)

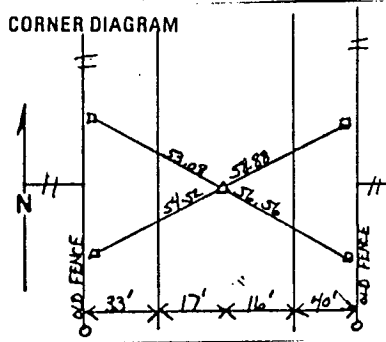
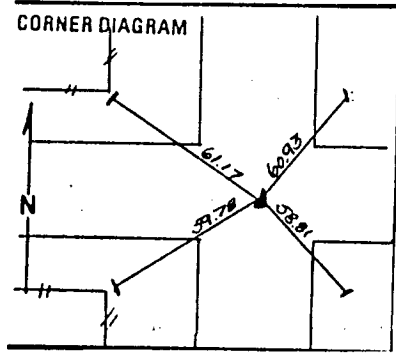
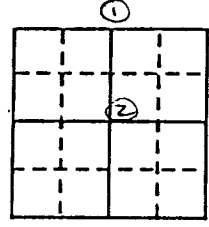
Monument Description and Remarks: ① ROUND-HEADED BOLT, 6" DEEP, AS SHOWN BELOW
② 3/8" REBAR, 2" DEEP, AS SHOWN BELOW

① N CORNER

② CENTER SECTION

PLAN - VIEW

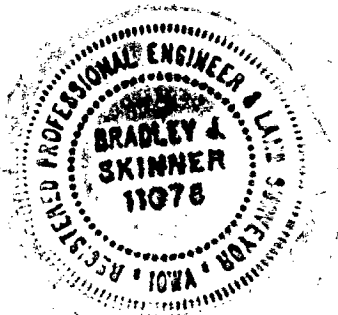
(Show a minimum of three reference ties to durable physical objects, relevant monuments and physical conditions that will enable recovery of the corner.)



I hereby certify that the survey work was completed and this certificate was prepared by me or under my direct personal supervision and that I am a duly registered land surveyor under the laws of the state of Iowa.

[Signature] 12/4/92
REGISTERED LAND SURVEYOR NO. 11078

SEAL



List Corners to be Indexed

Corners	Section	Twp	Range
N $\frac{1}{4}$	14	77	27
CENTER	14		

FILED NO. 27 **1859**
BOOK 1 PAGE 145

93 JAN 25 PM 1:49

MICHELLE UTSLER
RECORDER
MADISON COUNTY, IOWA

COMPUTER

IND.
REC.
PAGE

COMPARED Fee \$5.00