

UNITED STATES PUBLIC LAND SURVEY CORNER CERTIFICATE

OF

Land Survey Monuments situated in Section 9, Township 76 North, Range 28 West, of the Fifth Principal Meridian, Madison County, Iowa.
 Previously recorded in N/A in County Recorder's Office.

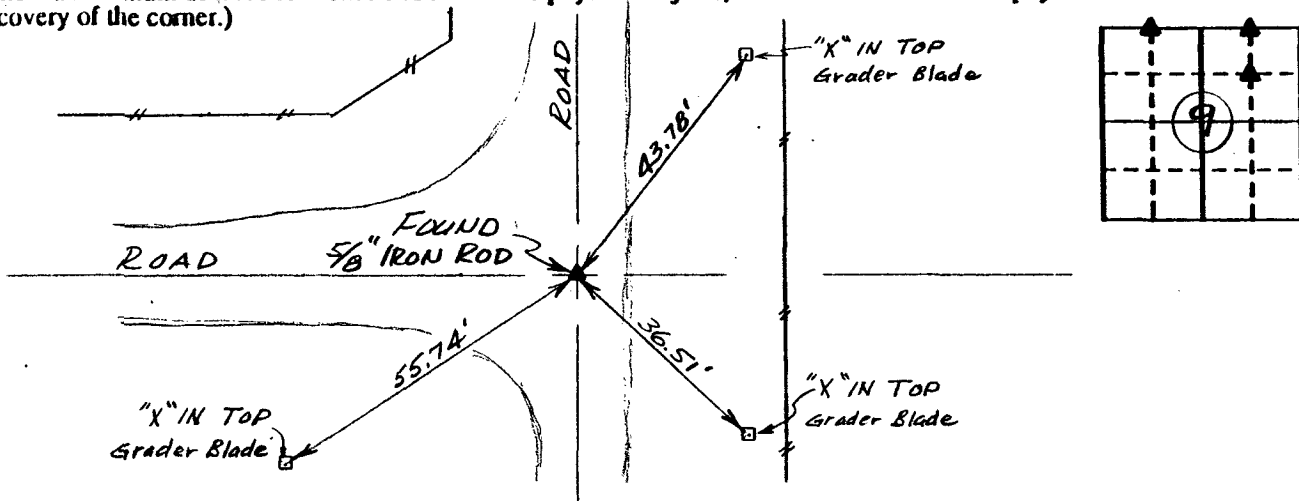
(book, page, document number, etc.)

(Show reason for preparing this certificate, the evidence and detailed procedures used in establishing the corner positions and monumentation found or placed.)

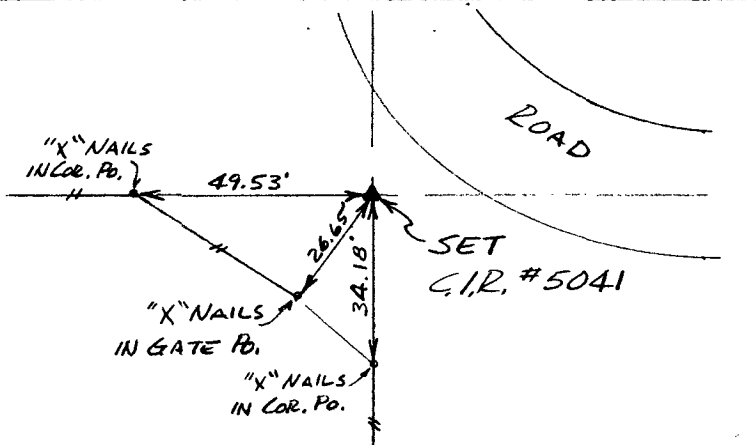
Monument Description and Remarks: _____

PLAN - VIEW

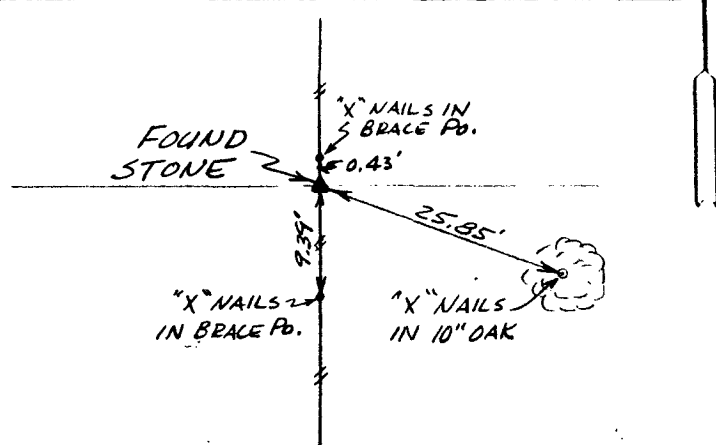
(Show a minimum of three reference ties to durable physical objects, relevant monuments and physical conditions that will enable recovery of the corner.)



Ref. to NE. COR., NW. 1/4 NE. 1/4, SECTION 9, T76N, R28W.



Ref. to NW. COR., NE. 1/4 NW. 1/4, SECTION 9, T76N, R28W.



Ref. to SE. COR., NW. 1/4 NE. 1/4, SECTION 9, T76N, R28W.

I hereby certify that the survey work was completed and this certificate was prepared by me or under my direct personal supervision and that I am a duly registered land surveyor under the laws of the state of Iowa.

Signature: Charles T. Vance
 Name typed or printed: Charles T. Vance, PE & LS
 Date: 14 Dec, 1992 Reg. No. 5041

Corners	List Corners to be Indexed	Section	Twp	Range
NE. COR.		9	76	28
NW. 1/4 NE. 1/4		9	76	28
NW. COR.		9	76	28
NE. 1/4 NW. 1/4		9	76	28
SE. COR.		9	76	28
NW. 1/4 NE. 1/4		9	76	28

COMPUTER

FILED NO. 1575
 BOOK 1 PAGE 142

92 DEC 18 PM 2:11

MICHELLE UTSLER
 RECORDER
 MADISON COUNTY, IOWA

SEAL

INT.
 REC.
 PAG.

COMPARED