

UNITED STATES PUBLIC LAND SURVEY CORNER CERTIFICATE

OF

Land Survey Monuments situated in Section 12, Township 77, Range 26, of the Fifth Principal Meridian, MADISON County, Iowa. Previously recorded in _____ in County Recorder's Office.

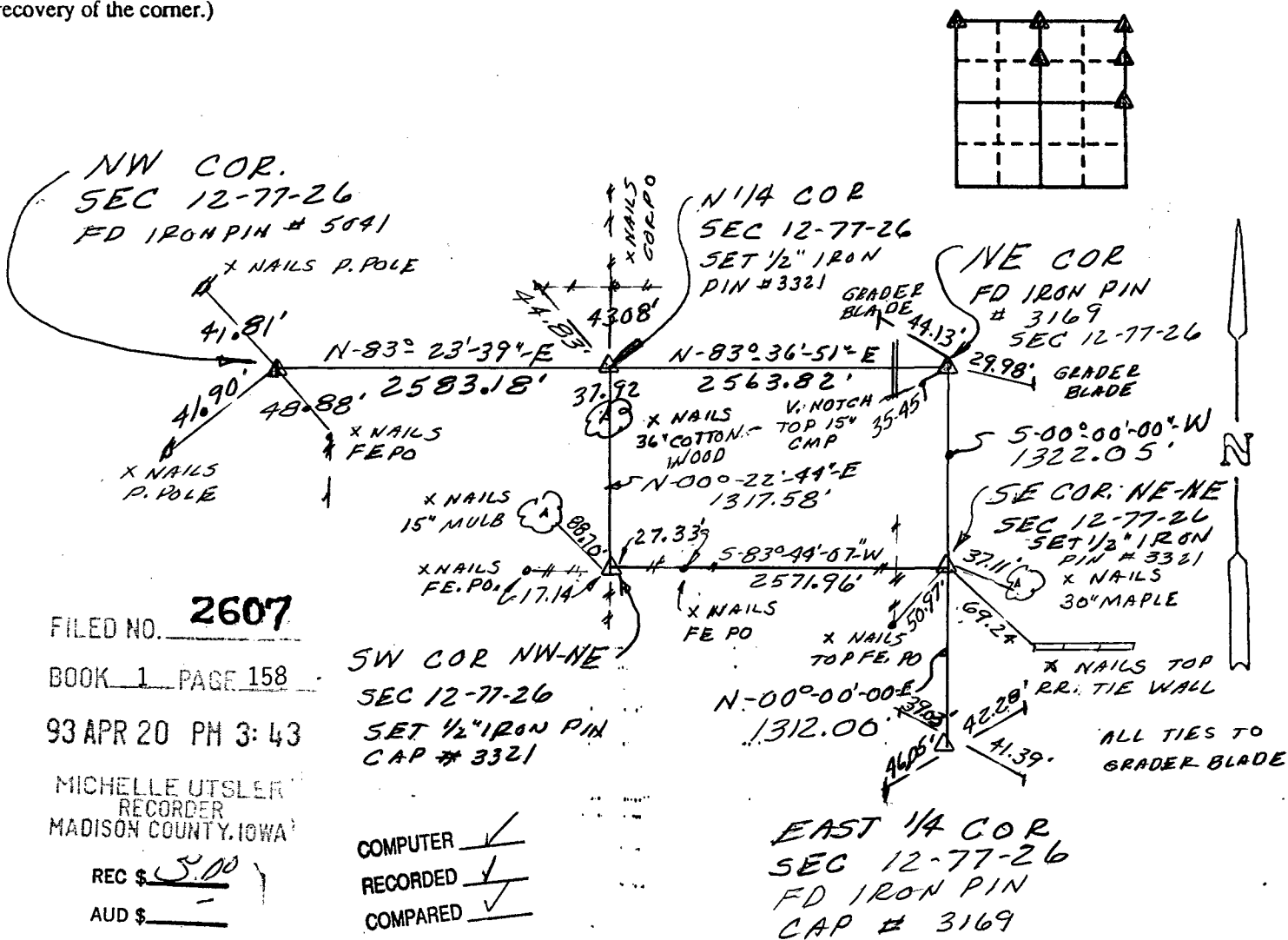
(book, page, document number, etc.)

(Show reason for preparing this certificate, the evidence and detailed procedures used in establishing the corner positions and monumentation found or placed.)

Monument Description and Remarks: NE COR - E 1/4 COR USED GRADER
BLADE TIES AND FOUND IRON PINS AT CORNERS
SE COR NE-NE SET 1/2" IRON PIN # 3321 ON 1/2 MILE LINE AND FE. LINE WEST
SW COR NW-NE SET 1/2" IRON PIN # 3321 AT FENCE CORNER
N 1/4 CORNER SET 1/2" IRON PIN USING R.O.W. FENCES & FENCE NORTH
NW CORNER FOUND IRON PIN IN ROAD AND RETIED

PLAN - VIEW

(Show a minimum of three reference ties to durable physical objects, relevant monuments and physical conditions that will enable recovery of the corner.)



FILED NO. **2607**
 BOOK 1 PAGE 158
 93 APR 20 PM 3:43
 MICHELLE UTSLER
 RECORDER
 MADISON COUNTY, IOWA
 REC \$ 5.00
 AUD \$ _____

COMPUTER
 RECORDED
 COMPARED

EAST 1/4 COR
 SEC 12-77-26
 FD IRON PIN
 CAP # 3169

I hereby certify that the survey work was completed and this certificate was prepared by me or under my direct personal supervision and that I am a duly registered land surveyor under the laws of the state of Iowa.

Signature: Henry S. Oakes
 Name typed or printed: HENRY S. OAKES
 Date: 4-19-93 Reg. No. 3321



SEAL

Corners	Section	Twp	Range
E 1/4	12	77	26
SE COR NE-NE	12	77	26
NE	12	77	26
N 1/4	12	77	26
NW	12	77	26
SW COR NW-NE	12	77	26