

UNITED STATES PUBLIC LAND SURVEY CORNER CERTIFICATE

OF

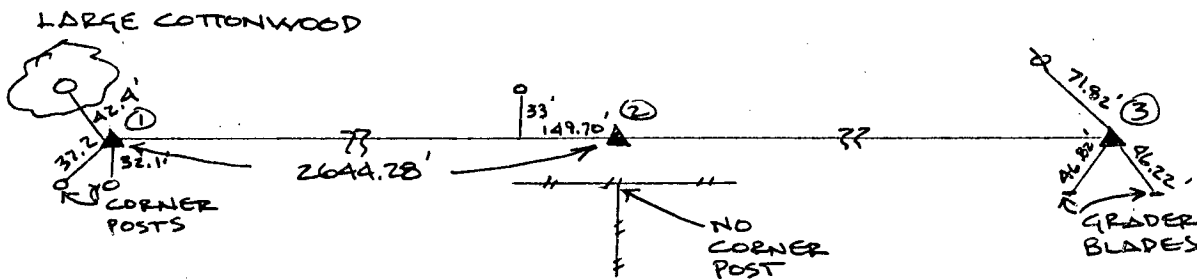
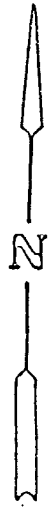
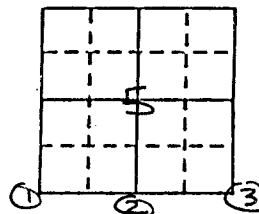
Land Survey Monuments situated in Section 5, Township 74 NORTH, Range 27 WEST, of the Fifth Principal Meridian, MADISON County, Iowa.
Previously recorded in Book , Page .

(Show reason for preparing this certificate, the evidence and detailed procedures used in establishing the corner positions and monumentation found or placed.)

Monument Description and Remarks: ① REPLACED NAIL W/ REBAR # CAP # 11078
AT SW CORNER ② FOUND REBAR # CAP # 5041 AT
CORNER ③ FOUND 5/8" REBAR AT SE CORNER

PLAN - VIEW

(Show a minimum of three reference ties to durable physical objects, relevant monuments and physical conditions that will enable recovery of the corner.)



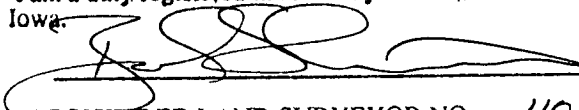
FILED NO. **2513**

BOOK 1 PAGE 155

93 APR -9 AM 10:49

COMPUTER MICHELLE UTSLER
RECORDED RECORDER
COMPARED MADISON COUNTY, IOWA
Fee \$ 5.00

I hereby certify that the survey work was completed and this certificate was prepared by me or under my direct personal supervision and that I am a duly registered land surveyor under the laws of the state of Iowa.

 1/26/93
REGISTERED LAND SURVEYOR NO. 11078

SEAL



List Corners to be Indexed

Corners	Section	Twp	Range
SW	5	74	27
S	5	74	27
SE	5	74	27