

UNITED STATES PUBLIC LAND SURVEY CORNER CERTIFICATE

OF

Land Survey Monuments situated in Section 24, Township 74, Range 26, of the Fifth Principal Meridian, MADISON County, Iowa. Previously recorded in _____ in County Recorder's Office.

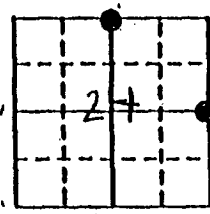
(book, page, document number, etc.)

(Show reason for preparing this certificate, the evidence and detailed procedures used in establishing the corner positions and monumentation found or placed.)

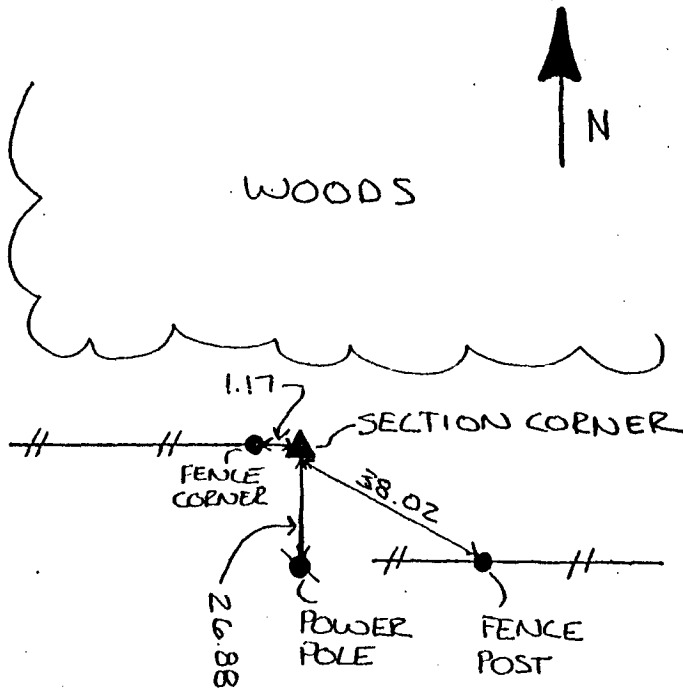
Monument Description and Remarks: E 1/4 COR 24-74-26: CONCRETE MONUMENT FOUND 1" ABOVE SURFACE N 1/4 COR 24-74-26: STONE FOUND .30' ABOVE SURFACE. THE E 1/4 COR WAS LOCATED BY USING EXISTING FENCE LINES (N & E). THE N 1/4 COR WAS LOCATED BY LOOKING AROUND LARGE POST IN FENCE LINE. NO TIES PREVIOUSLY FILED ON EITHER CORNER.

PLAN - VIEW

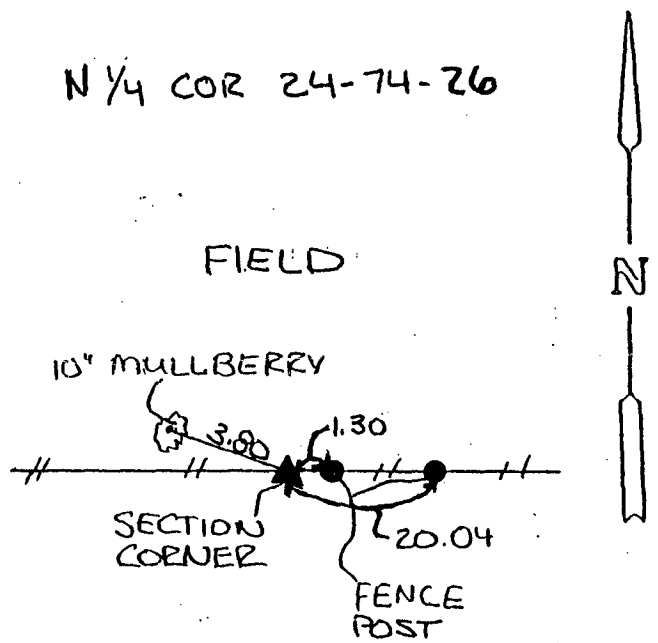
(Show a minimum of three reference ties to durable physical objects, relevant monuments and physical conditions that will enable recovery of the corner.)



E 1/4 COR 24-74-26



N 1/4 COR 24-74-26



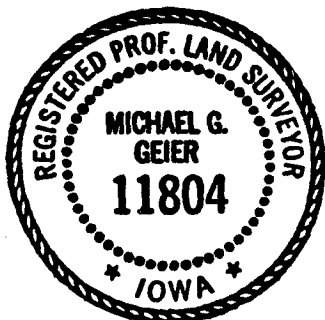
FOUND CONCRETE MONUMENT 1" ABOVE SURFACE. ALL TIES GO PENNIE "X" NAILS

FOUND STONE .30' ABOVE SURFACE, ALL TIES GO "PENNIE" "X" NAILS

I hereby certify that the survey work was completed and this certificate was prepared by me or under my direct personal supervision and that I am a duly registered land surveyor under the laws of the state of Iowa.

Signature: Michael G Geier
Name typed or printed: Michael G Geier, L.S.

Date: 9-29-92 Reg. No. 11804



SEAL

Corners	Section	Twp	Range
E 1/4 COR	24	74	26
N 1/4 COR	24	74	26

COMPUTER

FILED NO. 1338
Corner
BOOK 1 PAGE 134

Fee \$5.00

92 NOV 20 PM 2: 29

MICHELLE UTSLER
RECORDER
MADISON COUNTY, IOWA

IND.
REG.
PAGE