

UNITED STATES PUBLIC LAND SURVEY CORNER CERTIFICATE

OF

Land Survey Monuments situated in Section 15, Township 76 North, Range 28 West, of the Fifth Principal Meridian, MADISON County, Iowa.
 Previously recorded in N/A in County Recorder's Office.

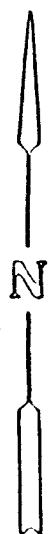
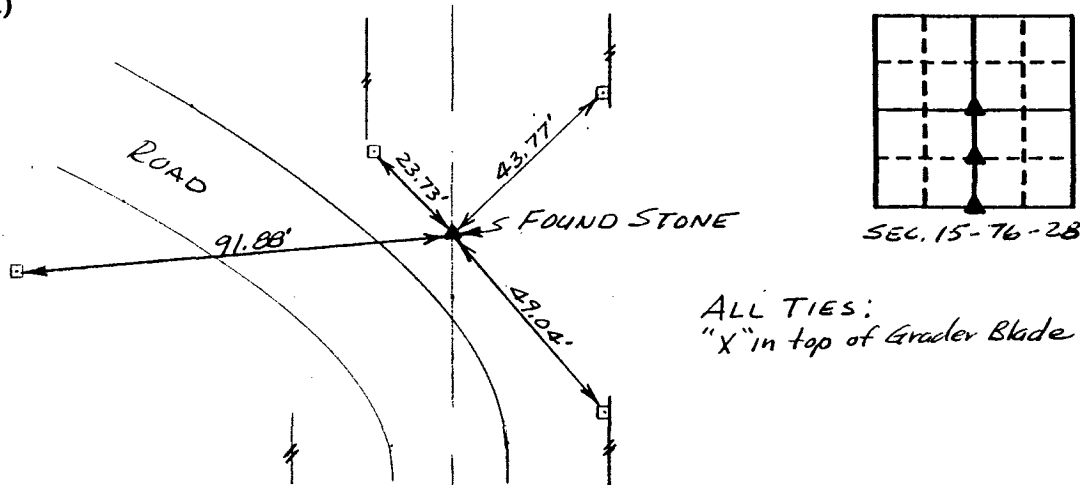
(book, page, document number, etc.)

(Show reason for preparing this certificate, the evidence and detailed procedures used in establishing the corner positions and monumentation found or placed.)

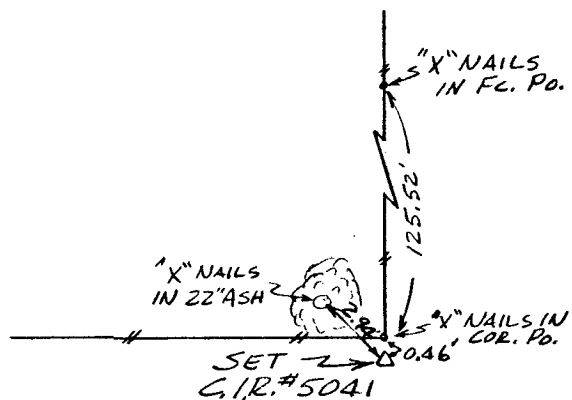
Monument Description and Remarks: _____

PLAN - VIEW

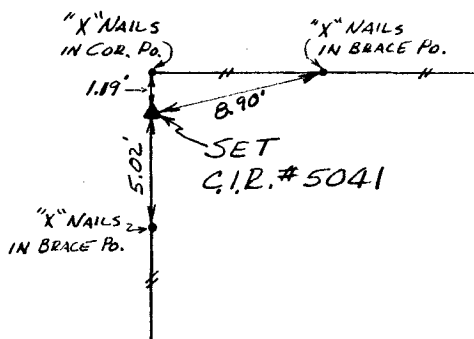
(Show a minimum of three reference ties to durable physical objects, relevant monuments and physical conditions that will enable recovery of the corner.)



Ref. to S. 1/4 COR., SECTION 15, T76N, R28W



Ref. to SE. COR., NE. 1/4 - SW. 1/4 SECTION 15, T76N, R28W



Ref. to CENTER of SECTION 15, T76N, R28W

I hereby certify that the survey work was completed and this certificate was prepared by me or under my direct personal supervision and that I am a duly registered land surveyor under the laws of the state of Iowa.

Signature: Charles T. Vance

Name typed or printed: Charles T. Vance, PE & LS

Date: 19 Nov. 1992 Reg. No. 5041



| Corners | List Corners to be Indexed | Section | Twp | Range |
|-----------------|----------------------------|---------|-----|-------|
| S. 1/4 COR. | | 15 | 76 | 28 |
| SE. COR. | | 15 | 76 | 28 |
| NE. 1/4 SW. 1/4 | | 15 | 76 | 28 |
| CENTER | | 15 | 76 | 28 |

COMPUTER

IND.
 REC.
 PAGE
 Fee \$5.00

FILED NO. 1330
 Corner
 BOOK 1 PAGE 132

92 NOV 20 PM 1:51

MICHELLE UTSLER
 RECORDER
 MADISON COUNTY, IOWA