

# UNITED STATES PUBLIC LAND SURVEY CORNER CERTIFICATE

OF

Land Survey Monuments situated in Section 2, Township 75 North, Range 27 West, of the Fifth Principal Meridian, MADISON County, Iowa. Previously recorded in N/A in County Recorder's Office.

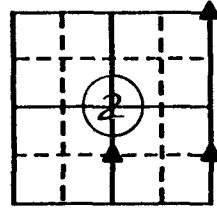
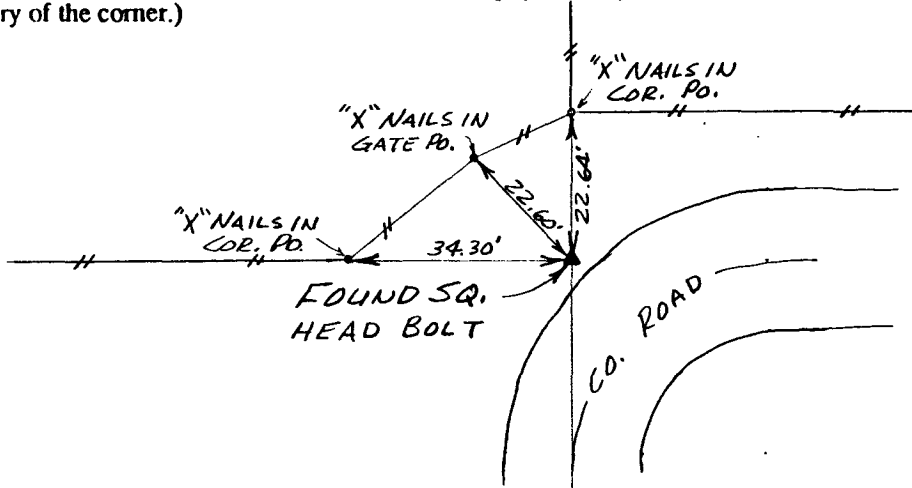
(book, page, document number, etc.)

(Show reason for preparing this certificate, the evidence and detailed procedures used in establishing the corner positions and monumentation found or placed.)

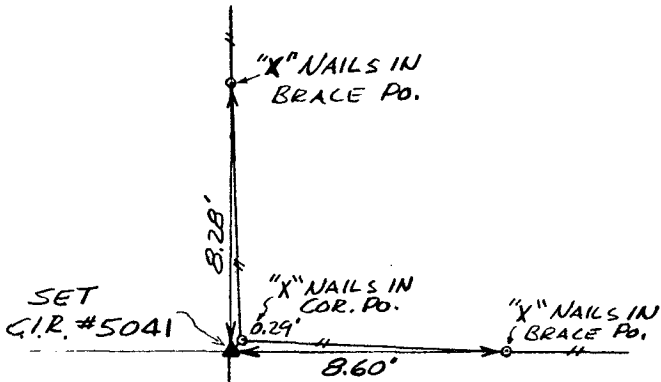
Monument Description and Remarks: \_\_\_\_\_

### PLAN - VIEW

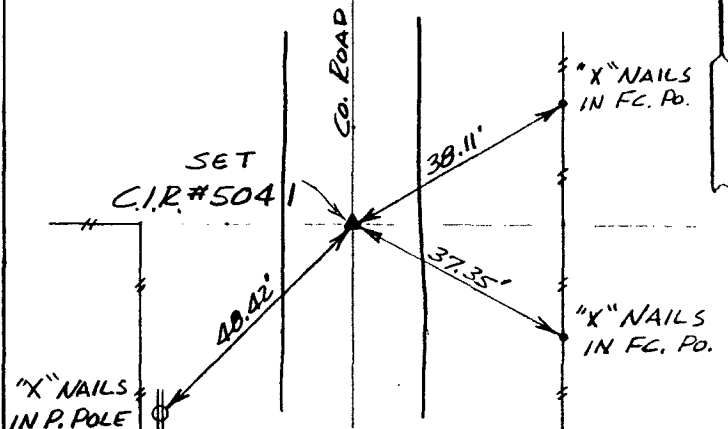
(Show a minimum of three reference ties to durable physical objects, relevant monuments and physical conditions that will enable recovery of the corner.)



Ref. to NE. COR., SECTION 2, T75N, R27W.



Ref. to SW. COR., NW. 1/4 - SE. 1/4, SECTION 2, T75N, R27W

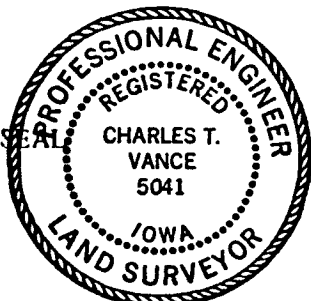


Ref. to SE. COR., NE. 1/4 - SE. 1/4 SECTION 2, T75N, R27W.

I hereby certify that the survey work was completed and this certificate was prepared by me or under my direct personal supervision and that I am a duly registered land surveyor under the laws of the state of Iowa.

Signature: Charles T. Vance  
Name typed or printed: Charles T. Vance, PE & LS

Date: 20 Oct. 1992 Reg. No. 5041



Corners	Section	Twp	Range
NE. COR.	2	75	27
SW. COR.			
NW. 1/4 SE. 1/4	2	75	27
SE. COR.			
NE. 1/4 SE. 1/4	2	75	27

COMPUTER FILED NO. 1328  
CORNER BOOK 1 PAGE 130

Fee \$5.00  
IND.   
REC.   
PAGE   
92 NOV 20 PM 1:49

MICHELLE UTSLER  
RECORDER  
MADISON COUNTY, IOWA

COMPARED