

# UNITED STATES PUBLIC LAND SURVEY CORNER CERTIFICATE

OF

Land Survey Monuments situated in Section 10, Township 75 North, Range 26 West, of the Fifth Principal Meridian, Madison County, Iowa. Previously recorded in N/A in County Recorder's Office.

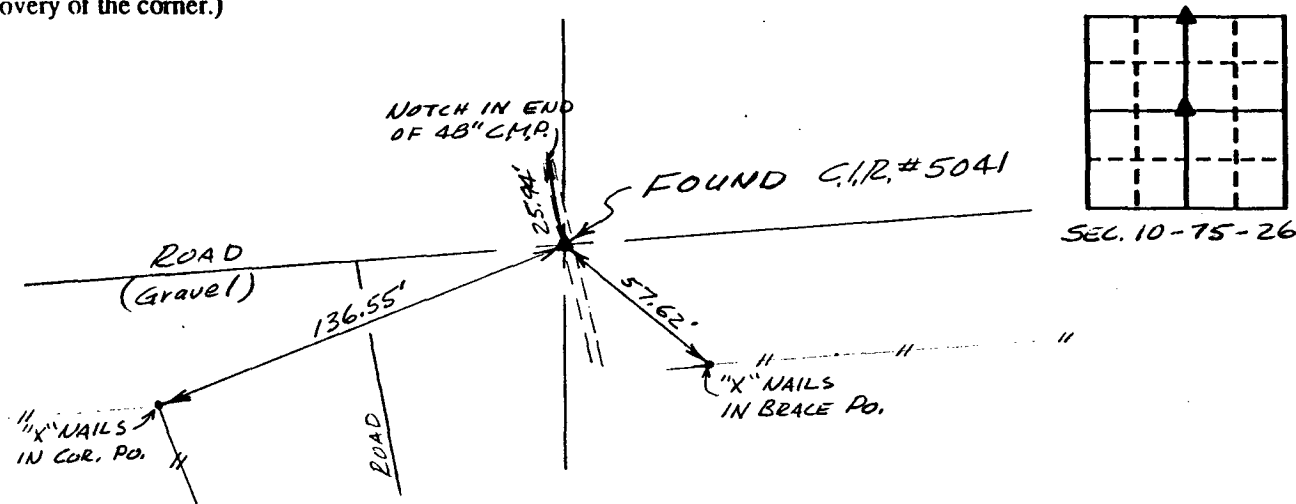
(book, page, document number, etc.)

(Show reason for preparing this certificate, the evidence and detailed procedures used in establishing the corner positions and monumentation found or placed.)

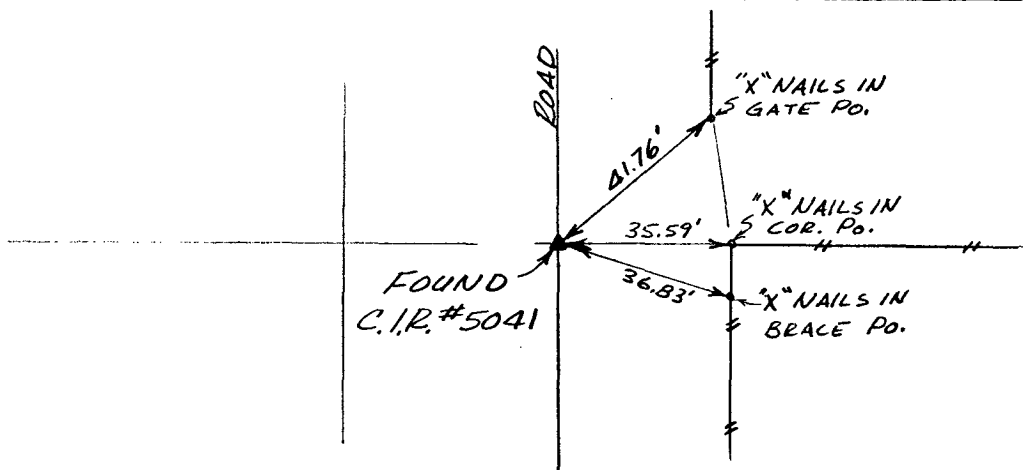
Monument Description and Remarks: \_\_\_\_\_

## PLAN - VIEW

(Show a minimum of three reference ties to durable physical objects, relevant monuments and physical conditions that will enable recovery of the corner.)



Ref. to N. 1/4 COR., SECTION 10, T75N, R26W

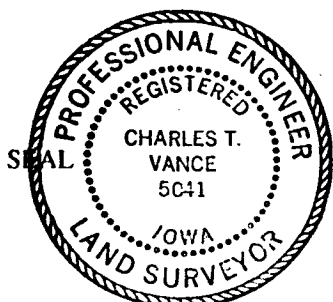


Ref. to CENTER OF SECTION 10, T75N, R26W

I hereby certify that the survey work was completed and this certificate was prepared by me or under my direct personal supervision and that I am a duly registered land surveyor under the laws of the state of Iowa.

Signature: Charles T. Vance  
Name typed or printed: Charles T. Vance, PE & LS

Date: 2 Oct. 1992 Reg. No. 5041



Corners	Section	Twps	Range
N. 1/4 COR.	10	75	26
CENTER	10	75	26

FILED NO. 1327

Corner BOOK 1 PAGE 129

COMPUTER

92 NOV 20 PM 1:48

MICHELLE UTSLER  
RECORDER  
MADISON COUNTY, IOWA

IND.   
REC.   
PAGE

Fee \$5.00